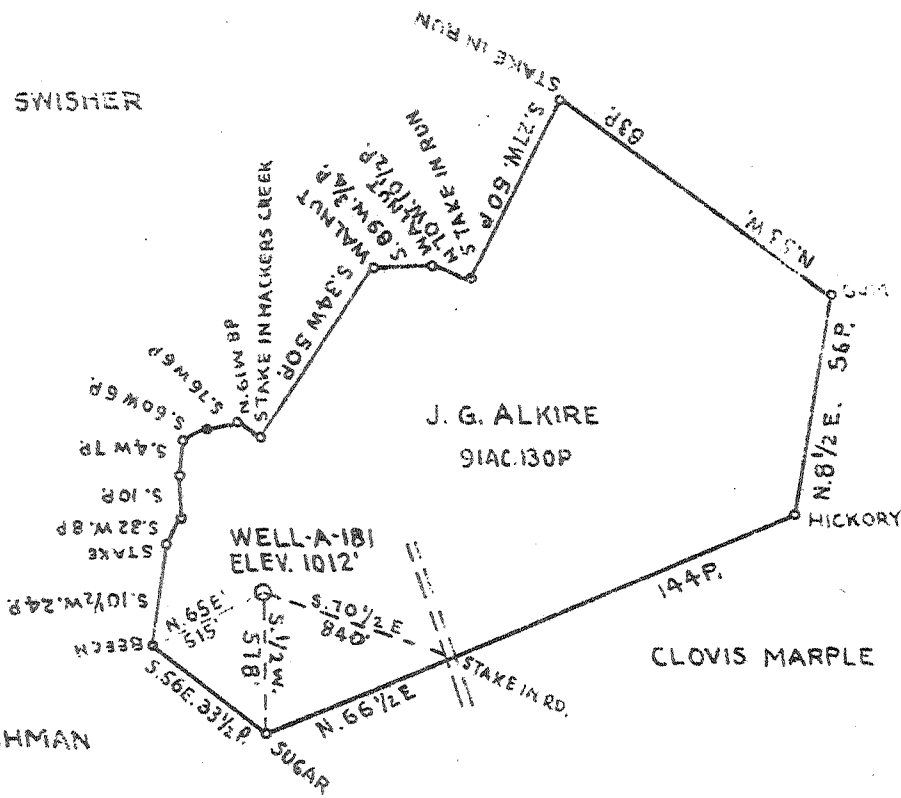


11457
2102W

J. C. STEALEY

MATTIE SWISHER



J. G. ALKIRE
91AC. 130P

CLOVIS MARPLE

ESTA M. HERSHMAN

COAL OWNED BY J.G. ALKIRE

NEW LOCATION

DRILL DEEPER

ABANDONMENT

COMPANY CUMBERLAND AND ALLEGHENY GAS CO.
 ADDRESS 800 UNION TRUST BLD'G. PITTSBURGH PA.
 FARM J.G. ALKIRE
 TRACT ACRES 91AC 130P LEASE NO. 273
 WELL (FARM) NO. 2 SERIAL NO. 181
 ELEVATION (SPIRIT LEVEL) 1012'
 QUADRANGLE WESTON
 COUNTY LEWIS DISTRICT HACKERS CREEK
 ENGINEER *J. G. Mercer*
 ENGINEER'S REGISTRATION NO. _____
 FILE NO. _____ DRAWING NO. Y-11-53
 DATE JULY 22 1944 SCALE 1" = 800'

STATE OF WEST VIRGINIA
 DEPARTMENT OF MINES
 OIL AND GAS DIVISION
 CHARLESTON

WELL LOCATION MAP
 FILE NO. *Lew-265-A*

DENOTES LOCATION OF WELL ON UNITED STATES TOPOGRAPHIC MAPS. SCALE 1 TO 62,500. LATITUDE AND LONGITUDE LINES BEING REPRESENTED BY BORDER LINES AS SHOWN.
 BEGINS ONE INCH SPACES ON BORDER LINE OF ORIGINAL MAP.

STATE OF WEST VIRGINIA
DEPARTMENT OF MINES
OIL AND GAS DIVISION

341

WELL RECORD

Permit No. 265-A Drilled in 1917

Oil or Gas Well Gas
(KIND)

Company <u>Cumberland and Allegheny Gas Company</u>	Casing and Tubing	Used in Drilling	Left in Well	Packers
Address <u>800 Union Trust Bldg., Pittsburgh, Pa.</u>	Size			
Farm <u>Harrison Alkire</u> Acres <u>90</u>	16			Kind of Packer
Location (waters) <u>(82-1-1)</u>	13			
Well No. <u>2-181</u> Elev. <u>1014</u>	10	<u>140'</u>	<u>140'</u>	Size of
District <u>Hackers Creek</u> County <u>Lewis</u>	8 1/4	<u>855'</u>	<u>-</u>	<u>6 5/8 x 2</u>
The surface of tract is owned in fee by <u>J Goodloe Alkire</u>	6 5/8	<u>1435'</u>	<u>1435'</u>	Depth set
<u>R. F. D. 1</u> Address <u>Jane Lew, WVa.</u>	5 3/16			<u>2068 ft.</u>
Mineral rights are owned by <u>Cumberland and Allegheny Gas Company</u>	3			Perf. top
Address <u>Pittsburgh, Pa.</u>	2			Perf. bottom
Drilling commenced <u>11/17/17</u>	Liners Used			Perf. top
Drilling completed <u>12/26/17</u>				Perf. bottom
Date Shot <u>?</u> From <u>?</u> To <u>?</u>				
With <u>20 qts</u>				

Open Flow /10ths Water in ? Inch
/10ths Merc. in ? Inch
 Volume ? Cu. Ft.
 Rock Pressure ? lbs. ? hrs.
 Oil ? bbls., 1st 24 hrs.
 Fresh water ? feet ? feet
 Salt water ? feet ? feet

CASING CEMENTED ? SIZE ? No. Ft. ? Date ?

COAL WAS ENCOUNTERED AT 48 FEET 24 INCHES
? FEET ? INCHES ? FEET ? INCHES
? FEET ? INCHES ? FEET ? INCHES

Formation	Color	Hard or Soft	Top	Bottom	Oil, Gas or Water	Depth Found	Remarks
Native Coal			48	50			
Slate & Shells			50	350			
Little Dunkard			350	500			
Big Dunkard			500	570			
Gas Sand			570	700			
First Salt Sand			700	770			
Slate			770	780			
Second Salt Sand			780	950			
Slate			950	960			
3rd Salt Sand			960	1055			
Slate & Shells			1055	1355			
Little Lime			1355	1370			
Pencil Cave			1370	1375			
Big Lime			1375	1435			
Big Injun			1435	1555			
Slate & Shells			1555	1680			
Gantz Sand			1680	1730			
Slate			1730	1738			
50-Foot Sand			1738	1785	Gas at 1745		
Slate			1785	1870			
30-Foot Sand			1870	1900			
Slate & Shells			1900	2010			
Gordon Stray			2010	2045			
Slate & Shells			2045	2053			
Gordon			2053	2075			
Slate			2075	2110			
4th Sand			2110	2117			
Slate			2117	2220			
5th Sand			2220	2250	Gas at 2247		
Bayard Sand			2308	2310			
Slate			2310	2332			
Total depth				2332			

