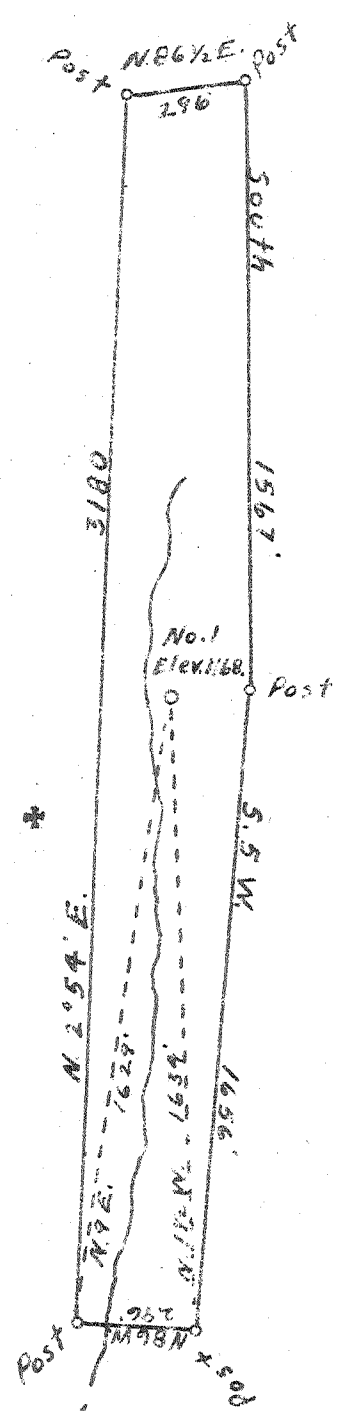


Geo. Cummins



57405  
4.174

Dr. C.L. Cookman

LEWIS

B.M. Davison

New Location   
Drill Deeper   
Abandonment

Company Standard Gas Co.  
 Address Jane Lew, W. Va  
 Farm Claudia Blake  
 Tract \_\_\_\_\_ Acres 29.2 Lease No. \_\_\_\_\_  
 Well (Farm) No. 1 Serial No. \_\_\_\_\_  
 Elevation (Spirit Level) 1168  
 Quadrangle Weston  
 County Lewis District Hackers Creek  
 Engineer A.K. Westfall  
 Engineer's Registration No. Surveyor  
 File No. \_\_\_\_\_ Drawing No. \_\_\_\_\_  
 Date April 20, 1995 Scale 1" = 500'

STATE OF WEST VIRGINIA  
DEPARTMENT OF MINES  
OIL AND GAS DIVISION  
CHARLESTON

WELL LOCATION MAP  
FILE NO. LEW-290-A

+ Denotes location of well on United States Topographic Maps. scale 1 to 62,500, latitude and longitude lines being represented by border lines as shown.  
- Denotes one inch spaces on border line of original tracing.



COPY  
380

STATE OF WEST VIRGINIA  
DEPARTMENT OF MINES  
OIL AND GAS DIVISION

WELL RECORD

Permit No. LEW-290-A

Oil or Gas Well Gas  
(KIND)

Company Standard Gas Company  
 Address Jane Lew, West Virginia  
 Farm Claudia Blake Acres 24.2  
 Location (waters) \_\_\_\_\_  
 Well No. 1 Elev. 1168  
 District Hacker's Creek County Lewis  
 The surface of tract is owned in fee by Mrs. Claudia Blake  
 Address St. Marys, W. Va.  
 Mineral rights are owned by Mrs. Claudia Blake  
 Address St. Marys, W. Va.  
 Drilling commenced \_\_\_\_\_  
 Drilling completed \_\_\_\_\_  
 Date Shot \_\_\_\_\_ From \_\_\_\_\_ To \_\_\_\_\_  
 With \_\_\_\_\_  
 Open Flow \_\_\_\_\_ /10ths Water in \_\_\_\_\_ Inch  
 \_\_\_\_\_ /10ths Merc. in \_\_\_\_\_ Inch  
 Volume \_\_\_\_\_ Cu. Ft.  
 Rock Pressure \_\_\_\_\_ lbs. \_\_\_\_\_ hrs.  
 Oil \_\_\_\_\_ bbls., 1st 24 hrs.  
 Fresh water \_\_\_\_\_ feet \_\_\_\_\_ feet  
 Salt water \_\_\_\_\_ feet \_\_\_\_\_ feet

Casing and Tubing	Used in Drilling	Left in Well	Packers
Size			
16			Kind of Packer _____
13			
10			Size of _____
8 1/4	900	900	
6 5/8			Depth set _____
5 3/16			
3	2450	2450	Perf. top _____
2			Perf. bottom _____
Liners Used			Perf. top _____
			Perf. bottom _____

CASING CEMENTED \_\_\_\_\_ SIZE \_\_\_\_\_ No. Ft. \_\_\_\_\_ Date \_\_\_\_\_  
 COAL WAS ENCOUNTERED AT \_\_\_\_\_ FEET \_\_\_\_\_ INCHES  
 \_\_\_\_\_ FEET \_\_\_\_\_ INCHES FEET \_\_\_\_\_ INCHES  
 \_\_\_\_\_ FEET \_\_\_\_\_ INCHES FEET \_\_\_\_\_ INCHES

Formation	Color	Hard or Soft	Top	Bottom	Oil, Gas or Water	Depth Found	Remarks
Native Coal			215	218			
Big Dunkard			435	465			
Gas Sand			610	655			
1st Salt Sand			815	925			
2d Salt Sand			960	985			
3d Salt Sand			1095	1170			
Little Lime			1395	1405			
Pencil Cave			1405	1434			
Big Lime			1434	1505			
Big Injun			1505	1650			
Squaw...			1670	1805			
Gantz			1810	1840			
Fifty Foot			1880				
Thirty Foot				2015			
Gordon			2191	2215			
Fourth			2290		Gas	2290	
Fifth				2322	Gas	2332	
TOTAL DEPTH				2450			

Formation	Color	Hard or Soft	Top	Bottom	Oil, Gas or Water	Depth Found	Remarks

Date April 25, 1945

APPROVED STANDARD GAS COMPANY, Owner

By General Manager  
(Title)