

39°02'30"

Latitude

80°37'30"

Longitude

2775  
07w

**Topo Location**

7.5' Loc. \_\_\_\_\_ 15' Loc. \_\_\_\_\_  
\_\_\_\_\_ (calc.) \_\_\_\_\_

Company \_\_\_\_\_

Farm \_\_\_\_\_

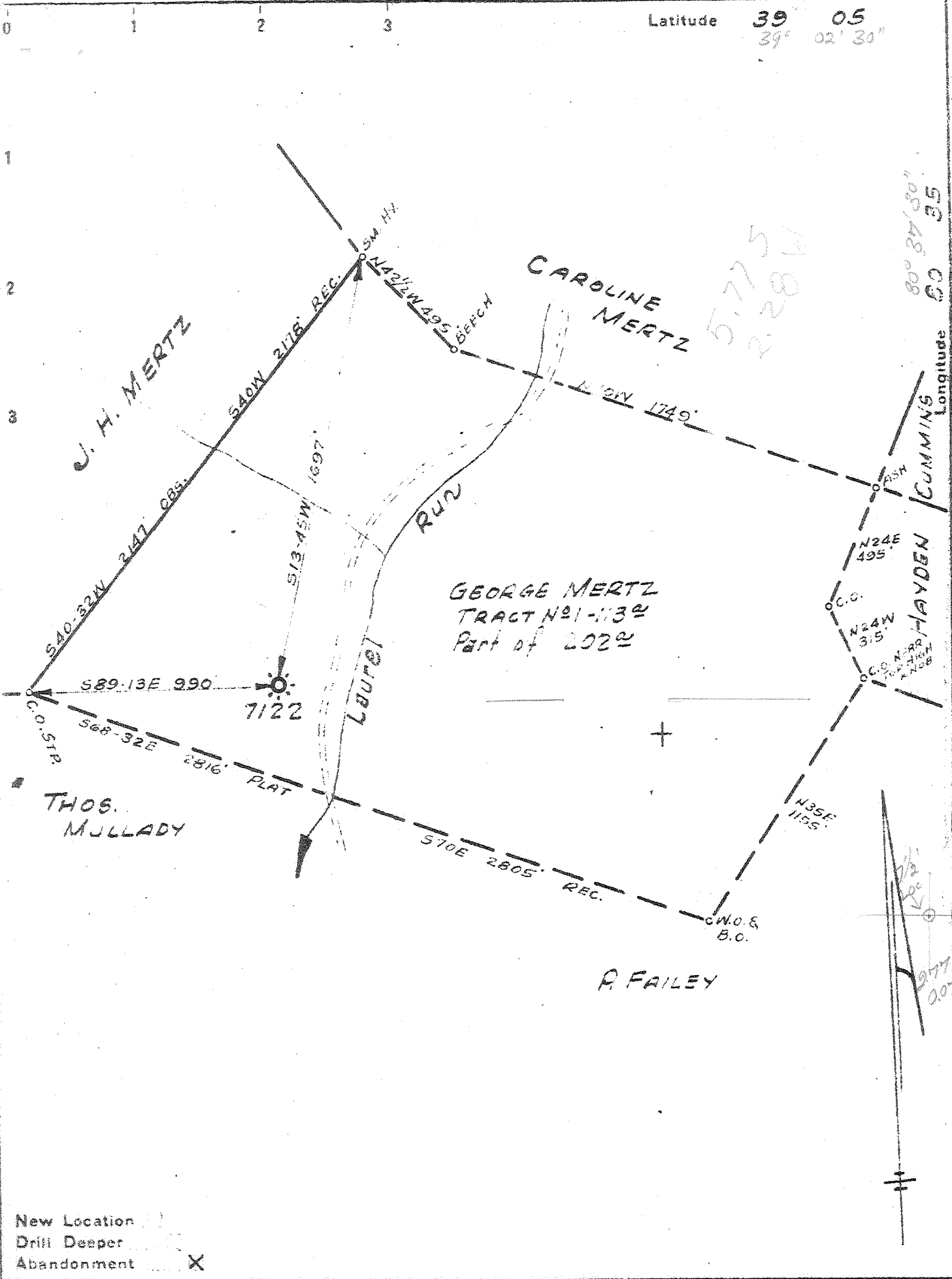
15' Quad \_\_\_\_\_  
(sec.)

7.5' Quad Vadis

District Count House

**WELL LOCATION PLAT**

County 041 Permit 30373



New Location   
 Drill Deeper   
 Abandonment

Company	Pittsburgh E. W. Va. Gas Co.		
Address	Clarksburg, W. Va.		
Farm	GEORGE MERTZ		
Tract	Acres	Lease No.	202 4425
Well (Farm) No.	4	Serial No.	7122
Elevation (Spirit Level)	977' V.A.		
Quadrangle	Vadis S.W. 44 VADIS 7 1/2		
County	Lewis	District	Court House
Engineer	Kenneth B. W. 1522		
Engineer's Registration No.			
File No.	DV-31. P-109	Drawing No.	
Date	July 17, 1947. Scale 1" = 500'		

STATE OF WEST VIRGINIA  
 DEPARTMENT OF MINES  
 OIL AND GAS DIVISION  
 CHARLESTON

WELL LOCATION MAP  
 FILE NO. LEW-373-A

+ Denotes location of well on United States Topographic Maps, scale 1 to 62,500, latitude and longitude lines being represented by border lines as shown.

- Denotes one inch spaces on border line of original tracing.





STATE OF WEST VIRGINIA  
DEPARTMENT OF MINES  
OIL AND GAS DIVISION

*(Handwritten initials)*

WELL RECORD

Permit No. 373-A

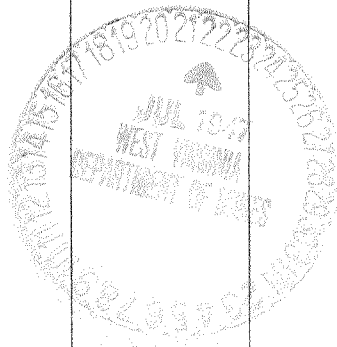
Oil or Gas Well Gas  
(KIND)

Company Pittsburgh E. W. Va. Gas Co.  
Address Clarksburg, W. Va.  
Farm George Mertz Acres 202  
Location (waters) Vadis S.W. 44  
Well No. 7122 Elev. 977' VA  
District Court House County Lewis  
The surface of tract is owned in fee by J. F. Mertz  
Address Camden, W. Va.  
Mineral rights are owned by J. F. Mertz  
Address Camden, W. Va.  
Drilling commenced 10-14-16  
Drilling completed 11-24-16  
Date Shot \_\_\_\_\_ From \_\_\_\_\_ To \_\_\_\_\_  
With \_\_\_\_\_  
Open Flow \_\_\_\_\_ /10ths Water in \_\_\_\_\_ Inch  
\_\_\_\_\_ /10ths Merc. in \_\_\_\_\_ Inch  
Volume \_\_\_\_\_ Cu. Ft.  
Rock Pressure \_\_\_\_\_ lbs. \_\_\_\_\_ hrs.  
Oil \_\_\_\_\_ bbls., 1st 24 hrs.  
Fresh water \_\_\_\_\_ feet \_\_\_\_\_ feet  
Salt water \_\_\_\_\_ feet \_\_\_\_\_ feet

Casing and Tubing	Used in Drilling	Left in Well	Packers
Size			Kind of Packer
16			
13			
10		<u>299'</u>	Size of
8 1/4		<u>972'</u>	
6 5/8		<u>1860'</u>	Depth set
5 3/16			
3			Perf. top
2			Perf. bottom
Liners Used			Perf. top
			Perf. bottom

CASING CEMENTED \_\_\_\_\_ SIZE \_\_\_\_\_ No. Ft. \_\_\_\_\_ Date \_\_\_\_\_  
COAL WAS ENCOUNTERED AT \_\_\_\_\_ FEET \_\_\_\_\_ INCHES  
\_\_\_\_\_ FEET \_\_\_\_\_ INCHES FEET \_\_\_\_\_ INCHES  
\_\_\_\_\_ FEET \_\_\_\_\_ INCHES FEET \_\_\_\_\_ INCHES

Formation	Color	Hard or Soft	Top	Bottom	Oil, Gas or Water	Depth Found	Remarks
Red Rock		Soft		15			
Sand	Light	Hard	15	95			
late. Shells		Soft - Hard	95	155			
Lime	Light	Hard	155	260			
Sand	"	Soft	260	320			
Red Rock		"	320	440			
sand	Light	Hard	440	485	Water	480	
late. Shells	"	Soft - Hard	485	600			
L. Dunkard	"	Hard	600	635			
late. Shells	"	Soft - Hard	635	690			
B. Dunkard	"	Hard	690	745			
Red Rock	Red	Hard	745	785			
late. Shells	Light	Soft - Hard	785	870			
Gas Sand	"	Hard	870	915			
slate	Dark	Soft	915	920			
1st Salt Sd.	Light	Hard	920	980			
slate	Dark	Soft	980	1060			
2nd salt Sd.	Light	Hard	1060	1200			
slate	Black	Soft	1200	1390			
3rd Salt Sd.	Light	Hard	1390	1414	Gas	1402 - 12	
slate	"	Soft	1414	1434			
Lime	"	Hard	1434	1460			
4th Salt Sd.	"	"	1460	1535			
slate	Dark	Soft	1535	1555			
Sand	Light	Hard	1555	1585			
slate	Dark	Soft	1585	1625			
Maxon Sd.	"	Hard	1625	1716			
slate	"	Soft	1716	1726			
Red Rock	Red	"	1726	1750			
Lime	Light	Hard	1750	1770			
slate	Dark	Soft	1770	1780			
Lime	"	Hard	1780	1800			
Pencil Cave	"	Soft	1800	1825			



(Over)

Formation	Color	Hard or Soft	Top	Bottom	Oil, Gas or Water	Depth Found	Remarks
B. Lime	White	Hard	1825	1880			
B. Injun	Light	"	1880	2070	Gas	2007-11	Filled To 2012'
Lime	Dark	"	2070	2150			
Slate. Shells	"	Soft. Hard	2150	2448			
Lime	Light	Hard	2448	2456			
Slate	Dark	Soft	2456	2500			
Gordon Stray	Gray	"	2500	2520			
Slate. Shells	Dark	Soft. Hard	2520	2528			
Gordon Sd.	Light	Soft	2528	2541	Gas	2530-38	
Slate. Shells	Dark	Soft. Hard	2541	2650			
Lime	Light	Hard	2650	2661			
Slate. Shells	Dark	Soft. Hard	2661	2691			
Sand	Red	Soft	2691	2703	Gas	2693-2703	
Total Depth				2711'			

Date July, 18, 1947  
APPROVED Pittsburgh N. Va. Gas Co. Owner  
By J. P. Buzan  
(Title)

COMPANY

Record of Well No. 7122 Located on Theo Mertg Farm Aug 11th 1916  
 Count Howard District Lewis County Md State  
 Division K District No. 13 Drilled under Well Order 671  
 Rig built by Joe Craig Began Sept 1916 Completed Sept 1916  
 Well drilled by C. M. McCall Began Oct 14 1916 Completed Nov 20th 1916  
 Depth of Well 2711 feet Size of Hole 5 7/16" Producing Gas  
 Elev. 9776

CASED WITH

REMARKS

AMOUNT	SIZE	KIND	REMARKS
16'	1 3/8"	Wood	
299'	1 0"	Gas	Reclaimed 8-11-47 all out
972'	8 1/4"	"	Reclaimed 8-11-47 all out
1860	6 7/8"	"	Reclaimed 1247' Left in 13' 8-11-47
2511'	5 7/16"	"	" Reclaimed 1/2 1916

COAL VEINS

FORMATIONS

NAME	TOP	BOTTOM	OIL	GAS	WATER	REMARKS
3rd Salt Sand	1390	1414		1402	1 1/2 to 2"	
Big Lime	1845	1880				
Big Shale	1880	2070		2007	20/10 to 2"	
Talbot Shale	2500	2520				
Talbot Sand	2528	2541		2530	1 1/2 to 2"	492 Mcx
Fifth Sand	2691	2703		2693	25/10 Max 5"	

Plugged and abandoned 7-23-47 to 8-11-47.

- Cavings 2711-2012
- Clay 2012-1870
- Stone 1870-1862
- Lead Plug 1862-1861
- Cement 1861-1851
- Wood Plug 1851-1848
- Clay 1848-1370
- Wood Plug 1370-1367
- Cement 1367-1357
- Wood Plug 1357-1354
- Clay 1354-850
- Wood Plug 850-847
- Cement 847-839
- Bridged Hole at 515
- Clay 515-493
- Wood Plug 493-490
- Cement 490-480
- Clay 480-5
- Cement 5-Surface

FIRST PRESSURE TEST IN 5 3/16 CASING

REMARKS

30 Sec. 27 lbs.  
 1 Min. 45 "  
 2 " 70 90/100  
 5 " 105 "  
 10 " 120 "  
 25 " 125 "  
 30 " "

Rock Pressure 155 " in 24 hrs  
 Taken Nov 24 1916  
 By R. J. Grubb

WELL TUBED AND PACKED Nov 30 1916

VIZ: - 121 ft to 2514' - 3" Tubing  
 6 1/2" x 3" Anchor Packer  
 39 ft to 59 ft in Anchor

Reclaimed 8-11-47  
 all out

FIRST PRESSURE TEST IN 3" TUBING

REMARKS

30 Sec. 50 lbs.  
 1 Min. 68 82 1/88  
 2 " 92 "  
 5 " 94 "  
 10 " 98 "  
 25 " 102 "  
 30 " "

Rock Pressure 120 " in 12 hrs  
 Taken Nov 30 1916  
 By R. J. Grubb

MATERIAL FOR THIS WELL RECEIVED FROM FOLLOWING SOURCES:

1 old Wood Rig. Iron and Timbers from 7052  
 5775 - New Rig. Iron A. L. Friskum

FORMATIONS

NAME	TOP	BOTTOM	OIL	GAS	WATER	REMARKS
Red Rock	00	15				
Sand	15	95				
Slate	95	155				
Lime	155	260				
Sand	260	320				
Red Rock	320	440				
Sand	440	485				
Slate	485	600				
Little Dunk	600	635				
Slate	635	690				
Big Dunkard	690	745				
Red Rock	745	785				
Slate	785	870				
Gas Sand	870	915				
Slate	915	920				
1st Salt Sand	920	980				
Slate	980	1060				
2nd Salt Sand	1060	1200				
Slate	1200	1390				
3rd Salt Sand	1390	1414				
Lime	1414	1434				1402 to 1412
Slate	1434	1460				
Sand	1460	1535				
Slate	1535	1555				
Sand	1555	1586				
Slate	1586	1625				
Maxon sand	1625	1716				
Slate	1716	1726				
Red Rock	1726	1750				
Lime	1750	1770				
Slate	1770	1780				
Little Lime	1780	1800				
Slate	1800	1825				
Lime <i>1319</i>	1825	1880				
Big Injun	1880	2070				
Lime	2070	2150				
Slate	2150	2448				
Lime	2448	2456				
Slate	2456	2500				
Gordon satry	2500	2520				
Slate	2520	2528				
Gordon sand	2528	2541				2530 2538
Slate	2541	2650				
Lime	2650	2661				
Slate	2661	2691				
Fifth sand	2691	2703				2695 to 2703
Slate	2703	2711	F.D.			