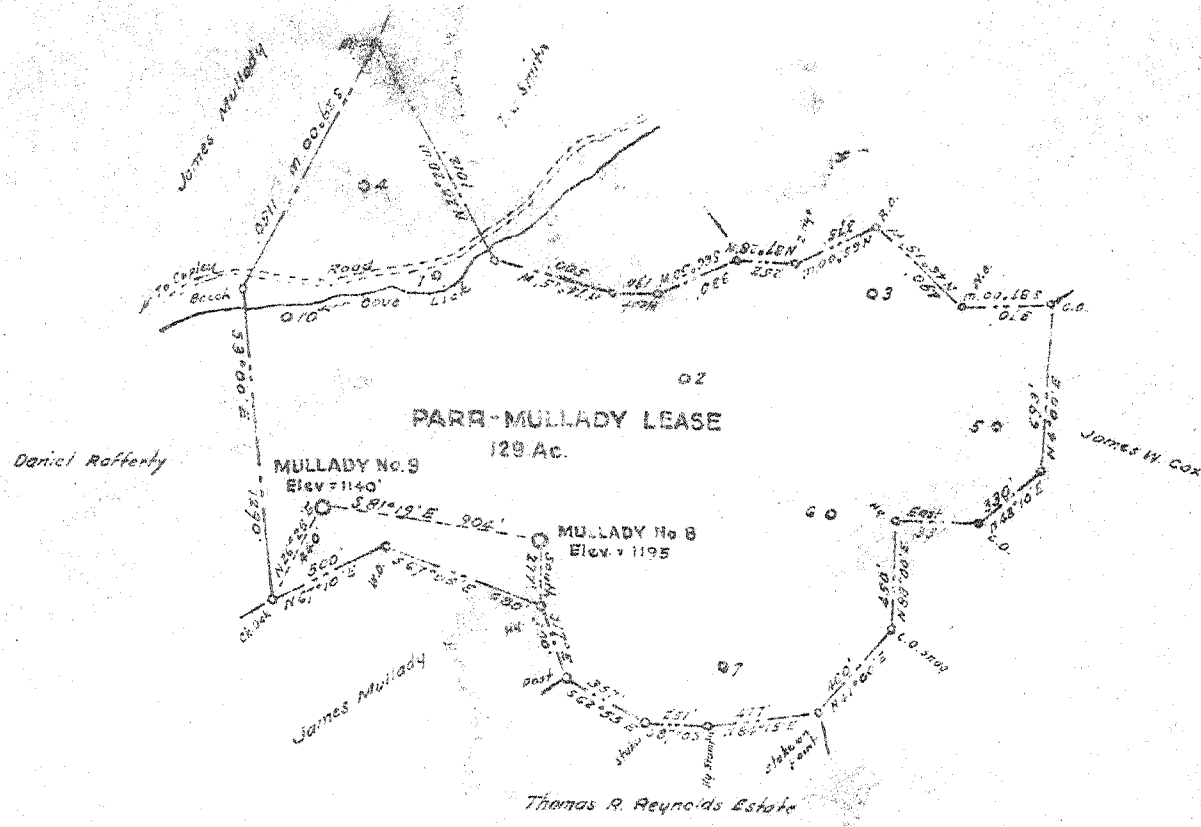


#8	1.105 2864W
#9	1.075 2864W

No. 9 + No. 8



New Location   
 Drill Deeper   
 Abandonment

No commercial coal operations in this vicinity

Company J.O. BOYLE  
 Address Youngwood, Penna.  
 Farm Parr-Mullady Lease - Edward Mullady farm  
 Tract \_\_\_\_\_ Acres 129 Lease No. \_\_\_\_\_  
 Well (Farm) No. 8-9 Serial No. \_\_\_\_\_  
 Elevation (Spirit Level) No. 8 - 1195 No. 9 - 1140  
 Quadrangle Burnsville  
 County Lewis District Court House \_\_\_\_\_  
 Engineer Michael J. [Signature]  
 Engineer's Registration No. 1227  
 File No. \_\_\_\_\_ Drawing No. \_\_\_\_\_  
 Date April, 1948 Scale 1" = 800'

STATE OF WEST VIRGINIA  
 DEPARTMENT OF MINES  
 OIL AND GAS DIVISION  
 CHARLESTON

WELL LOCATION MAP  
 FILE NO. LEW-410-A-#8  
LEW-411-A-#9

+ Denotes location of well on United States Topographic Maps, scale 1 to 62,500, latitude and longitude lines being represented by border lines as shown.  
 - Denotes one inch spaces on border lines of original tracing.



532

STATE OF WEST VIRGINIA  
DEPARTMENT OF MINES  
OIL AND GAS DIVISION

WELL RECORD

Permit No. 411-A

Oil or Gas Well Oil  
(KIND)

Company J.O. Boyle  
 Address 1/2 Jas. J. Light, Weston, W. Va  
 Farm Parr-Mullady Acres \_\_\_\_\_  
 Location (waters) \_\_\_\_\_  
 Well No. 9 Elev. \_\_\_\_\_  
 District Co. rt House County Lovic  
 The surface of tract is owned in fee by \_\_\_\_\_  
 Address \_\_\_\_\_  
 Mineral rights are owned by \_\_\_\_\_  
 Address \_\_\_\_\_  
 Drilling commenced \_\_\_\_\_  
 Drilling completed Sept. 26, 1907  
 Date Shot \_\_\_\_\_ From \_\_\_\_\_ To \_\_\_\_\_  
 With \_\_\_\_\_  
 Open Flow \_\_\_\_\_ /10ths Water in \_\_\_\_\_ Inch  
 \_\_\_\_\_ /10ths Merc. in \_\_\_\_\_ Inch  
 Volume \_\_\_\_\_ Cu. Ft.  
 Rock Pressure \_\_\_\_\_ lbs. \_\_\_\_\_ hrs.  
 Oil \_\_\_\_\_ bbls., 1st 24 hrs.  
 Fresh water \_\_\_\_\_ feet \_\_\_\_\_ feet  
 Salt water \_\_\_\_\_ feet \_\_\_\_\_ feet

Casing and Tubing	Used in Drilling	Left in Well	Packers
Size			
16			Kind of Packer
13			
10			Size of
8 1/2			
6 5/8	<u>2200</u>		Depth set
5 3/16			
3			Perf. top
2			Perf. bottom
Liners Used			Perf. top
			Perf. bottom

CASING CEMENTED \_\_\_\_\_ SIZE \_\_\_\_\_ No. Ft. \_\_\_\_\_ Date \_\_\_\_\_  
 COAL WAS ENCOUNTERED AT 420 FEET 48 INCHES  
 \_\_\_\_\_ FEET \_\_\_\_\_ INCHES FEET \_\_\_\_\_ INCHES  
 \_\_\_\_\_ FEET \_\_\_\_\_ INCHES FEET \_\_\_\_\_ INCHES

Formation	Color	Hard or Soft	Top	Bottom	Oil, Gas or Water	Depth Found	Remarks
Pgh. Coal			420	424			
Big Lime			2120	2200			
Big Injun			2200	2300			
Stray			2745	2754			
Gordon			2767	2778	Gas 2762		
Firth			2936	2944	Oil 2941		
Total Depth				2971			



FEB 3 1949