

Latitude

Longitude

1.595
.87w

Topo Location

7.5' Loc. \_\_\_\_\_ 15' Loc. \_\_\_\_\_  
 \_\_\_\_\_ (calc.) \_\_\_\_\_

Company \_\_\_\_\_

Farm \_\_\_\_\_

15' Quad \_\_\_\_\_  
(sec.)

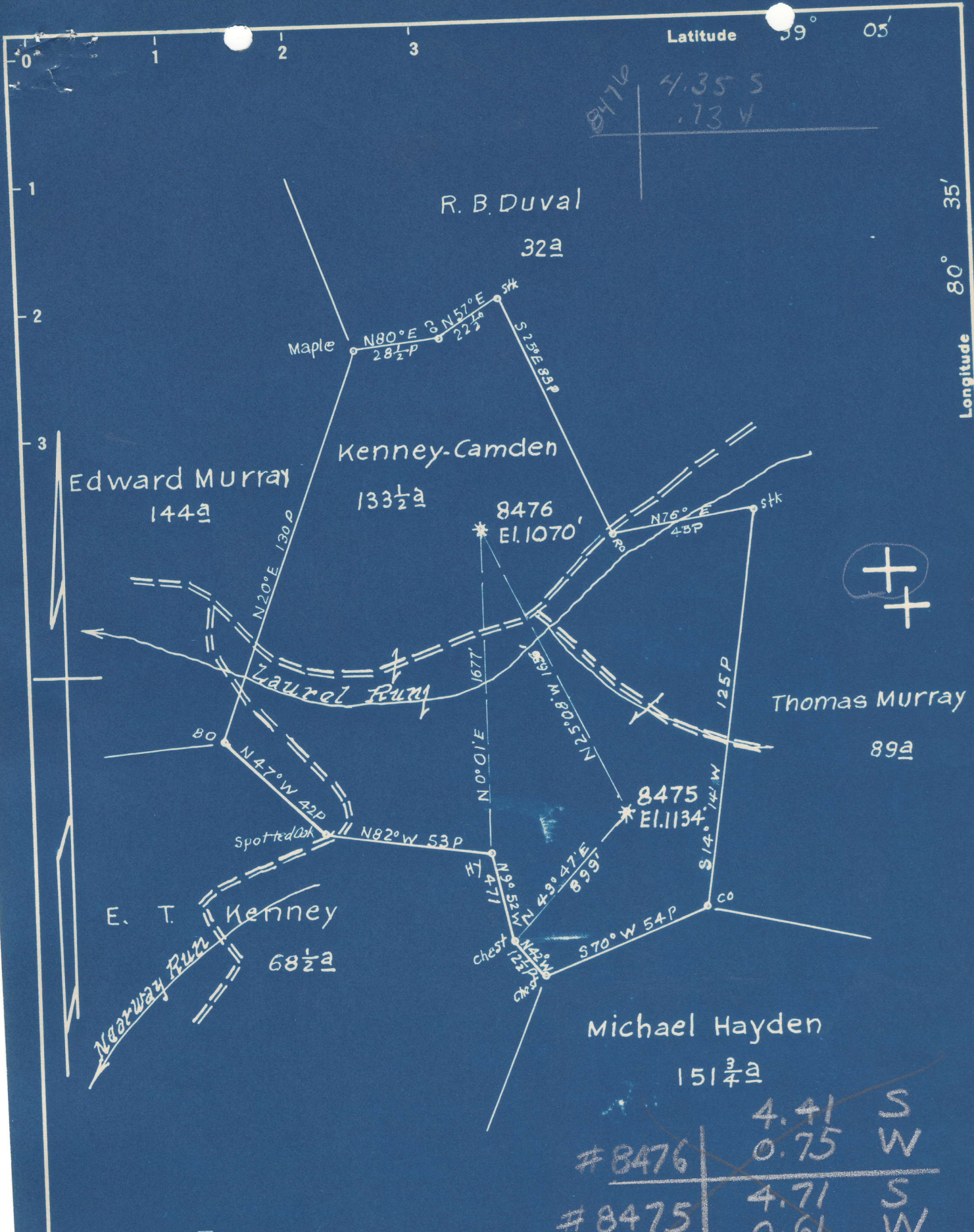
7.5' Quad Camden

District Court House

WELL LOCATION PLAT

County 041 Permit 3043





New Location...   
 Drill Deeper.....   
 Abandonment.....  8476 Partial

Map Sh. 72 S30 W1 FB 917 P25-28.

#8476	4.41	S
	0.75	W
#8475	4.71	S
	0.61	W

Company Hope Natural Gas Co  
 Address Clarksburg, W Va.  
 Farm Kenney-Camden  
 Tract \_\_\_\_\_ Acres 133 1/2 Lease No. 53318  
 Well (Farm) No. \_\_\_\_\_ Serial No. As Shown  
 Elevation (Spirit Level) As Shown  
 Quadrangle Vadis  
 County Lewis District Court House  
 Engineer W M Bowers  
 Engineer's Registration No. 900 SC  
 File No. \_\_\_\_\_ Drawing No. \_\_\_\_\_  
 Date 11-29-48 Scale 1" = 40 P

STATE OF WEST VIRGINIA  
 DEPARTMENT OF MINES  
 OIL AND GAS DIVISION  
 CHARLESTON

WELL LOCATION MAP  
 FILE NO. LEW-453-A #847

+ Denotes location of well on United States Topographic Maps, scale 1 to 62,500, latitude and longitude lines being represented by border lines as shown.

- Denotes one inch spaces on border line of original tracing.



KENNEY CAMDEN NO. 8476 WELL.

453A

Court House District, Lewis County, W. Va.  
 By Hope Natural Gas Co., 445 W. Main St., Clarksburg, W. Va.  
 Abandoned under permit Lew-.....-A?  
 On ..... acres.  
 Elevation, ..... ' L.  
 Drilling commenced Nov. 19, 1916; completed Jan. 4, 1917.  
 No water recorded.  
 8½" casing, 885'; 6⅝", 1810'; 2" tubing, 2668'; all left in.  
 Casing not cemented.  
 Coal was encountered at 98-100 and 300-306'.  
 Gas well. Abandonment reported to Dept. of Mines Nov. 23, 1948.  
 Record to RCT from Mrs. Griffith March 17, 1949. Old File No. 537.

	Top.	Bottom.
Native coal	98	100
Pittsburgh Coal	300	306
Little Dunkard Sand	420	455
Big Dunkard Sand (show gas, 652')	640	700
Gas Sand	735	816
First Salt Sand	912	1064
Second Salt Sand (show oil, 1412')	1080	1194
Little Lime	1713	1741
Pencil Cave	1741	1746
Big Lime	1746	1806
Big Injun Sand (gas, 1918')	1806	1962
Squaw Sand (show oil, 2028')	1963	2065
Gordon Stray Sand	2410	2430
Gordon Sand (gas, 2440, 2487, 2492, 2494')	2439	2499
Fifth Sand (gas, 2634')	2632	2641
Total depth		2668





STATE OF WEST VIRGINIA  
DEPARTMENT OF MINES  
OIL AND GAS DIVISION

537

WELL RECORD

Permit No. Ab 453-A

Oil or Gas Well \_\_\_\_\_  
(KIND)

Company Hope Natural Gas Company.  
Address 445 West Main St. Clarksburg, W. Va.  
Farm Kenney Camden Acres \_\_\_\_\_  
Location (waters) \_\_\_\_\_  
Well No. 8476 Elev. \_\_\_\_\_  
District Courthouse County Lewis  
The surface of tract is owned in fee by \_\_\_\_\_  
Address \_\_\_\_\_  
Mineral rights are owned by \_\_\_\_\_  
Address \_\_\_\_\_  
Drilling commenced Nov. 19, 1916  
Drilling completed Jan. 4, 1917  
Date Shot \_\_\_\_\_ From \_\_\_\_\_ To \_\_\_\_\_  
With \_\_\_\_\_  
Open Flow \_\_\_\_\_ /10ths Water in \_\_\_\_\_ Inch  
\_\_\_\_\_ /10ths Merc. in \_\_\_\_\_ Inch  
Volume \_\_\_\_\_ Cu. Ft.  
Rock Pressure \_\_\_\_\_ lbs. \_\_\_\_\_ hrs.  
Oil \_\_\_\_\_ bbls., 1st 24 hrs.  
Fresh water none recorded feet \_\_\_\_\_ feet  
Salt water none recorded feet \_\_\_\_\_ feet

Casing and Tubing	Used in Drilling	Left in Well	Packers
Size			Kind of Packer
16			
13			
10			Size of
8 1/4	885	885	
6 5/8	1810	1810	Depth set
5 3/16			
3			Perf. top
2	2668	2668	Perf. bottom
Liners Used			Perf. top
			Perf. bottom

CASING CEMENTED \_\_\_\_\_ Not \_\_\_\_\_ SIZE \_\_\_\_\_ No. Ft. \_\_\_\_\_ Date \_\_\_\_\_  
COAL WAS ENCOUNTERED AT 98 FEET 24 INCHES  
300 FEET 72 INCHES FEET INCHES  
FEET INCHES FEET INCHES

Formation	Color	Hard or Soft	Top	Bottom	Oil, Gas or Water	Depth Found	Remarks
Native coal			98	100			
Pitts. Coal			300	306			
Little Dunkard			420	455			
Big Dunkard			640	700	show gas	652	
Gas sand			735	816			
First Salt			912	1064			
Second Salt			1080	1194			
Little Lime			1713	1741	show oil	1412	
Pencil cave			1741	1746			
Big Lime			1746	1806			
Big Injun			1806	1962	gas	1918	
Squaw			1963	2065	show oil	2028	
Gordon Stray			2410	2430			
Gordon			2439	2499	gas	2440 87 92 94	
Fifth			2632	2641	gas	2634	
Total depth				2668			

