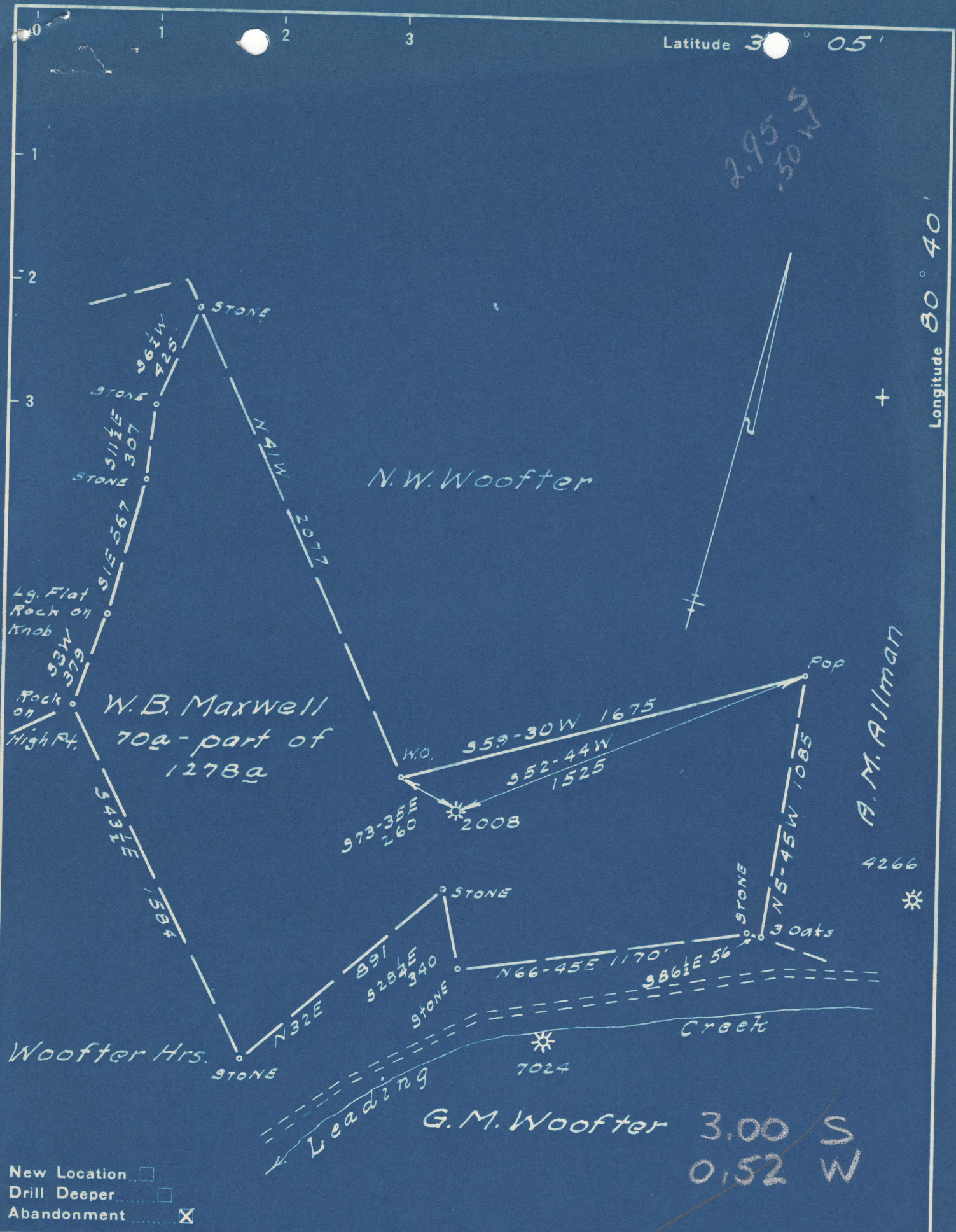


Latitude 30° 05'

Longitude 80° 40'



Company Pittsburgh & W.Va Gas Co
 Address Clarksburg W.Va.
 Farm W.B. Maxwell
 Tract _____ Acres 1200 Lease No. 7642
 Well (Farm) No. 1 Serial No. 2008
 Elevation (Spirit Level) 839 V.A.
 Quadrangle Vadis SW 4-
 County Lewis District Freemans Cr
 Engineer Jasent D. Jeffries
 Engineer's Registration No. 1084 **SW**
 File No. 161/41 Drawing No. _____
 Date 3-8-49 Scale 1"=500'

STATE OF WEST VIRGINIA
 DEPARTMENT OF MINES
 OIL AND GAS DIVISION
 CHARLESTON

WELL LOCATION MAP
 FILE NO. LCW-474-A

+ Denotes location of well on United States Topographic Maps, scale 1 to 62,500, latitude and longitude lines being represented by border lines as shown.

- Denotes one inch spaces on border line of original tracing.



556

STATE OF WEST VIRGINIA DEPARTMENT OF MINES OIL AND GAS DIVISION

WELL RECORD

"GAS"

Permit No.

477-A

Oil or Gas Well

(KIND)

Company Pittsburgh & West Va Gas Company, Address Clarksburg, West Va. Farm W. B. Maxwell Acres 1200 Location (waters) Vadis S/W. 4-1 Well No. 2008 Elev. 839' VA District Freemans Creek County Lewis The surface of tract is owned in fee by W. C. Stark Alum Bridge, W.Va. Mineral rights are owned by Wm. B. Maxwell et al. Clarksburg, West Va.

Table with columns: Casing and Tubing, Used in Drilling, Left in Well, Packers. Includes data for sizes 16, 13, 10, 8 1/4, 6 5/8, 5 3/16 and packer details.

Drilling commenced February 22, 1910 Drilling completed April 14, 1910 Date Shot From To With Open Flow /10ths Water in Inch /10ths Merc. in Inch Volume Cu. Ft. Rock Pressure lbs. hrs. Oil bbls., 1st 24 hrs. Fresh water feet feet Salt water feet feet

CASING CEMENTED SIZE No. Ft. Date COAL WAS ENCOUNTERED AT 660 FEET 48 INCHES

Main well log table with columns: Formation, Color, Hard or Soft, Top, Bottom, Oil, Gas or Water, Depth Found, Remarks. Lists geological layers from Mud to Slate&Shells.

