

Latitude

Longitude

1.32s
1.40w

Topo Location

7.5' Loc. \_\_\_\_\_ 15' Loc. \_\_\_\_\_  
 \_\_\_\_\_ (calc.) \_\_\_\_\_

Company \_\_\_\_\_

Farm \_\_\_\_\_

15' Quad \_\_\_\_\_  
(sec.)

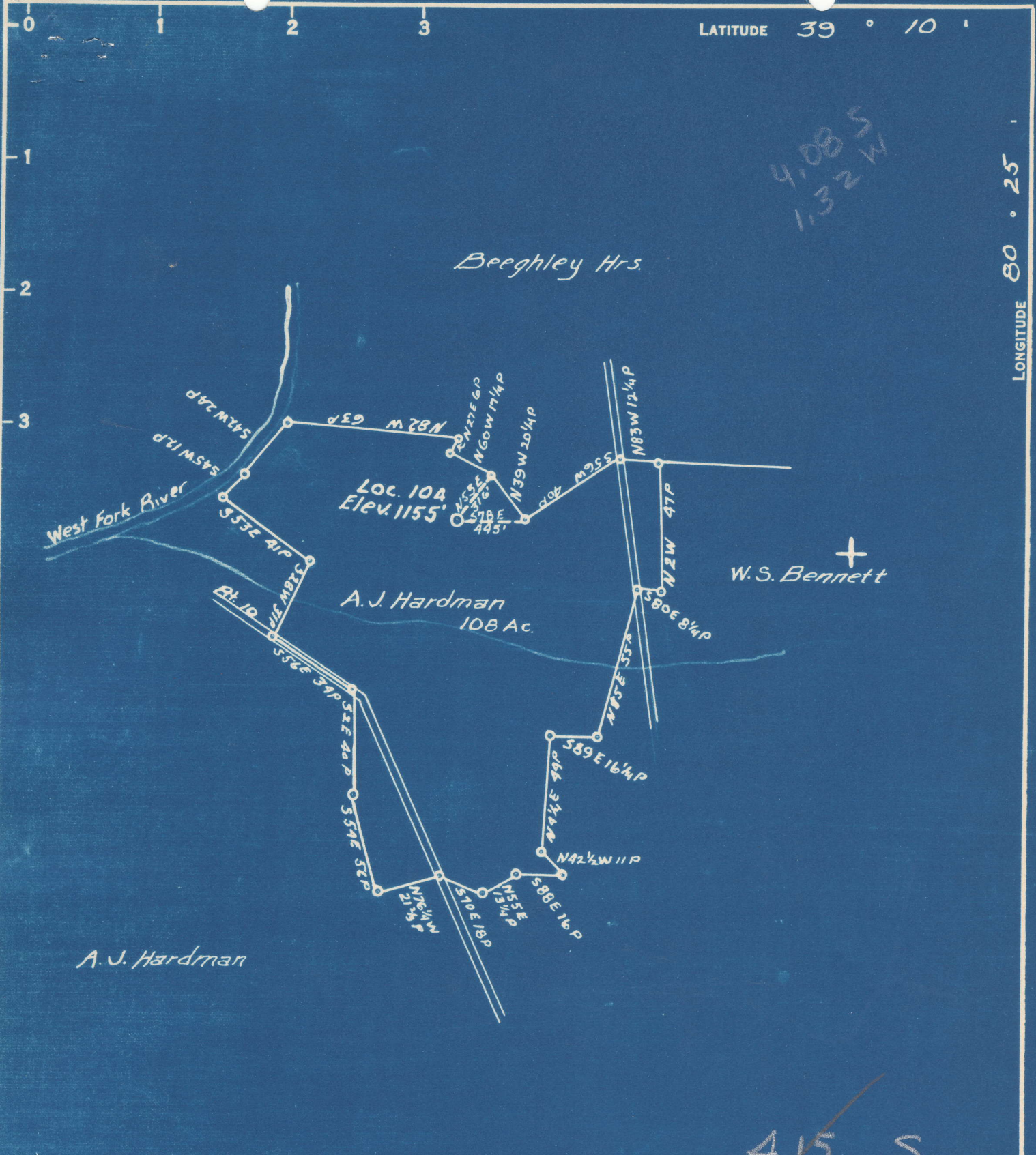
7.5' Quad Western

District Hackers Creek

WELL LOCATION PLAT

County 04 Permit 30517





COAL OWNED BY Victor Hardman  
Jane Lew, W. Va.

NEW LOCATION.....  
DRILL DEEPER.....  
ABANDONMENT.....

COMPANY Cumberland & Allegheny Gas Co.  
ADDRESS 800 Union Trust Bldg, Pittsburgh Pa.  
FARM A.J. Hardman  
TRACT 3 ACRES 108 LEASE No. 279  
WELL (FARM) No. 1 SERIAL No. 104  
ELEVATION (SPIRIT LEVEL) 1155'  
QUADRANGLE Weston  
COUNTY Lewis DISTRICT Hackers Creek  
ENGINEER Vincent Orsic  
ENGINEER'S REGISTRATION No. \_\_\_\_\_  
FILE No. \_\_\_\_\_ DRAWING No. Y-13-290  
DATE Aug 5 1949 SCALE 1" = 800'

STATE OF WEST VIRGINIA  
DEPARTMENT OF MINES  
OIL AND GAS DIVISION  
CHARLESTON

WELL LOCATION MAP

FILE No. LEW-517-A

+ DENOTES LOCATION OF WELL ON UNITED STATES TOPOGRAPHIC MAPS. SCALE 1 TO 62,500. LATITUDE AND LONGITUDE LINES BEING REPRESENTED BY BORDER LINES AS SHOWN.  
- DENOTES ONE INCH SPACES ON BORDER LINE OF ORIGINAL TRACING.



Hackers Creek District, Lewis County, W. Va.  
 By Cumberland & Allegheny Gas Co., 800 Union Trust Bldg., Pittsburgh, Pa.  
 Abandoned under permit Lew-517-A?  
 On 288 acres.  
 Elevation, ..... ' L.  
 Surface owned by Daisy Hardman King, 345 Elizabeth St., Uniontown, Pa.,  
 and minerals by Cumberland & Allegheny Gas Co., 800 Union Trust  
 Bldg., Pittsburgh, Pa.  
 Drilling commenced Dec. 9, 1913; completed Jan. 10, 1914.  
 10" casing, 168' (pulled); 8 $\frac{1}{4}$ " , 677'; 6 $\frac{5}{8}$ " , 1331'.  
 Packer, 6 $\frac{5}{8}$ " x 3, set at 2000'.  
 Coal was encountered at 140-144'.  
 Steel-line measurement, 1891'.  
 6 $\frac{5}{8}$ " x 3 black rubber Spanf packer, 189'. 3" tubing under packer. 3"  
 nipple 12" long in top of packer. 3 x 2 swedge and R & L. nipple  
 and coupling in top of 3" nipple.  
 Shot with 30 qts. Feb. 10, 1927. Gauge before shot, 83,000 cu. ft.  
 Gauge one hour after shot, 180,000 cu. ft. Gauge Mar. 1 when well  
 was tubed, 134,400 cu. ft. Top of shot, 4157'; bottom, 4167'.  
 Gas well. Record to Dept. of Mins dated Aug. 17, 1949.  
 Record to RCT from Mrs. Griffith Nov. 4, 1949. Old File No. 598.

	Top.	Bottom.
Slate and shells	0	140
Pittsburgh Coal	140	144
Little Dunkard Sand	170	205
Big Dunkard Sand	220	318
Gas Sand (hole full of water)	455	490
1st Salt Sand	625	660
2nd Salt Sand	710	740
3rd Salt Sand	820	955
Red rock	1050	1200
Maxton Sand	1200	1225
Little Lime	1235	1257
Pencil Cave	1257	1272
Big Lime	1272	1327
Big Injun Sand	1327	1448
Squaw Sand	1448	1468
Bantz Sand	1642	1665
Fifty-foot Sand	1750	1771
Thirty-foot Sand	1874	1918
Gordon Sand	1990	2020
Fifth Sand	2147	2171
Hard lime	2189	3079
Slate	3079	3090
Hard lime	3090	3135
Slate and shells	3135	3470
Hard lime	3470	3520
Black slate	3520	3625
Hard lime	3625	3640
Slate and shells	3640	4155
Benson Sand (gas, 4161-4168')	4155	4169
Lime	4169	4203
Total depth		4203





STATE OF WEST VIRGINIA  
DEPARTMENT OF MINES  
OIL AND GAS DIVISION

*JFB*

WELL RECORD

Permit No. *Ab 577-A* Oil or Gas Well (KIND)

Company Cumberland & Allegheny Gas Company  
Address 800 Union Trust Bldg., Pittsburgh, Pa.  
Farm A. J. Hardman Acres 288  
Location (waters) \_\_\_\_\_  
Well No. 1-104 Elev. \_\_\_\_\_  
District Hackers Creek County Lewis  
The surface of tract is owned in fee by Daisy Hardman King  
345 Elizabeth St. Address Uniontown, Pa.  
Mineral rights are owned by Cumberland & Allegheny Gas Co.  
800 Union Trust Bldg. Address Pittsburgh, Pa.  
Drilling commenced December 9, 1913  
Drilling completed January 10, 1914  
Date Shot \_\_\_\_\_ From \_\_\_\_\_ To \_\_\_\_\_  
With \_\_\_\_\_

Casing and Tubing	Used in Drilling	Left in Well	Packers
Size			Kind of Packer
16.			
13.			
10.	168	Pulled	Size of
8 1/4.	677	677	6-5/8 x 3
6 1/2.	1331	1331	Depth set
5 3/16.			2000
3.			Perf. top
2.			Perf. bottom
Liners Used			Perf. top
			Perf. bottom

Open Flow \_\_\_\_\_ /10ths Water in \_\_\_\_\_ Inch  
\_\_\_\_\_ /10ths Merc. in \_\_\_\_\_ Inch  
Volume \_\_\_\_\_ Cu. Ft.  
Rock Pressure \_\_\_\_\_ lbs \_\_\_\_\_ hrs.  
Oil \_\_\_\_\_ bbls., 1st 24 hrs.  
Fresh water \_\_\_\_\_ feet \_\_\_\_\_ feet  
Salt water \_\_\_\_\_ feet \_\_\_\_\_ feet

CASING CEMENTED \_\_\_\_\_ SIZE \_\_\_\_\_ No. Ft. \_\_\_\_\_ Date \_\_\_\_\_  
COAL WAS ENCOUNTERED AT 140 FEET 48 INCHES  
\_\_\_\_\_ FEET \_\_\_\_\_ INCHES \_\_\_\_\_ FEET \_\_\_\_\_ INCHES  
\_\_\_\_\_ FEET \_\_\_\_\_ INCHES \_\_\_\_\_ FEET \_\_\_\_\_ INCHES

Formation	Color	Hard or Soft	Top	Bottom	Oil, Gas or Water	Depth Found	Remarks
Slate & Shells			0	140			
Pittsburgh Coal			140	144			
Little Dunkard			170	205			
Big Dunkard			220	318			
Gas Sand			455	490	Hole full of water		
1st. Salt Sand			625	660			
2nd. Salt Sand			710	740			
3rd. Salt Sand			820	955			
Red Rock			1050	1200			
Maxon Sand			1200	1225			
Little Lime			1235	1257			
Pencil Cave			1257	1272			
Big Lime			1272	1327			
Big Injun			1327	1448			
Squaw Sand			1448	1468			
Gantz			1642	1665			
Fifty Foot Sand			1750	1771	Broken up		
Thirty Foot Sand			1874	1918	Steel Line measurement	1891'	
Gordon Sand			1990	2020	6-5/8 x 3 black rubber Spang Packer		
Fifth Sand			2147	2171	189 ft. 3" tubing under packer		
Hard Lime			2189	3079	3" Nipple 12" long in top of packer		
Slate			3079	3090	3 x 2 swedge and R & L nip. and eplg.		
Hard Lime			3090	3135	in top of 3" nipple.		
Slate and Shells			3135	3470			
Hard Lime			3470	3520			
Black Slate			3520	3625			
Hard Lime			3625	3640			
Slate and Shells			3640	4155			
Benson			4155	4169	Gas 4161 to 4168.		
Lime			4169	4203			
TOTAL DEPTH				4203	Shot with 30 qts. 2/10/27. Gauge before shot 83,000 Gauge one hr. after shot, 180,000. Gauge Mar. 1, when well was tubed 134,400. Top of shot 4157 - Bottom 4167'.		





