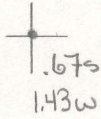


Latitude



Longitude

Topo Location

7.5' Loc. \_\_\_\_\_ 15' Loc. \_\_\_\_\_  
 \_\_\_\_\_ (calc.) \_\_\_\_\_

Lewis Co Rept 161

Company Reserve

Farm James R. Bailey #49

15' Quad \_\_\_\_\_  
(sec.)

7.5' Quad Camden

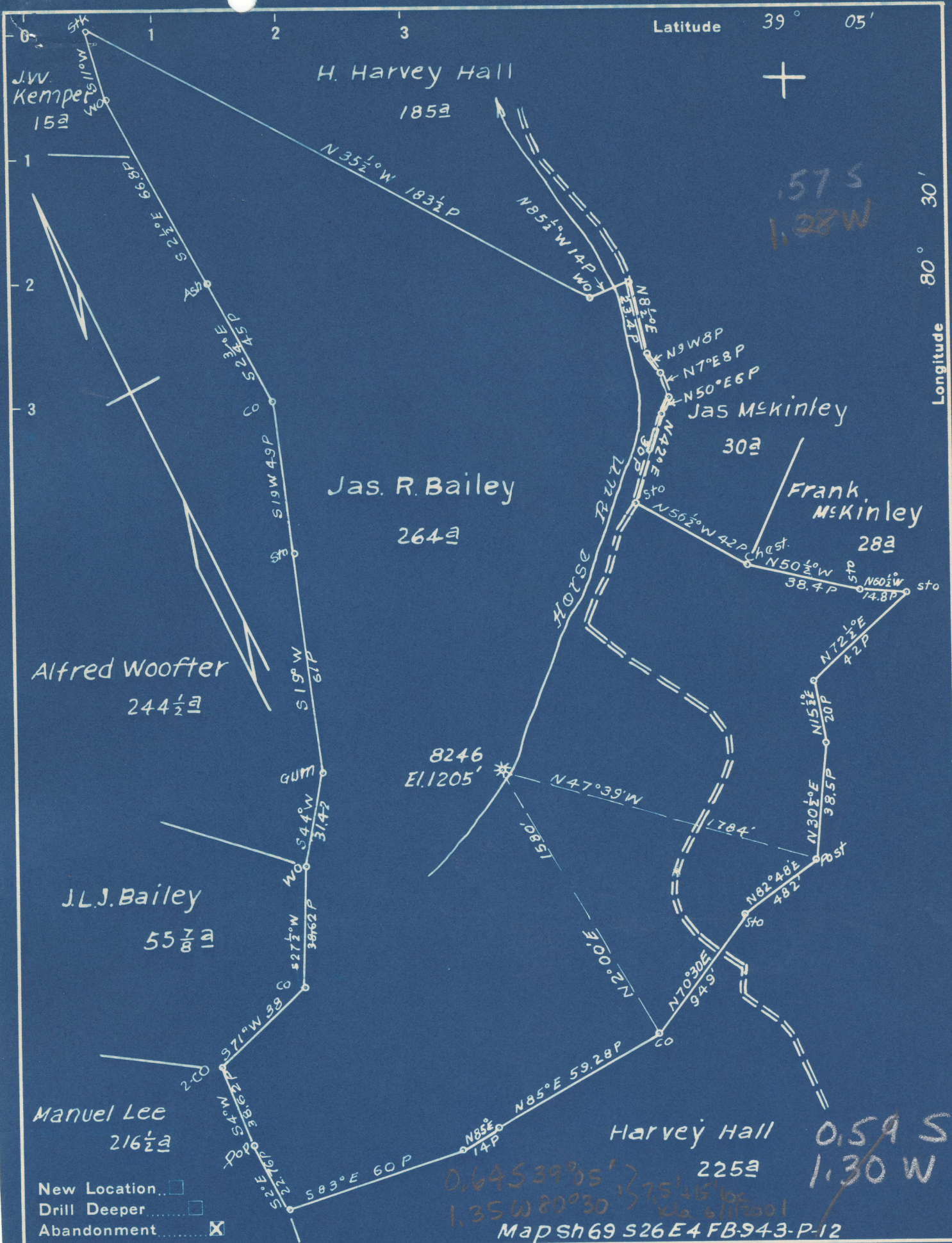
District Freeman's Creek

WELL LOCATION PLAT

County 041 Permit 76262

NOW 041 30529





Company Hope Natural Gas Co  
 Address Clarksburg, W.Va.  
 Farm Jas R. Bailey  
 Tract \_\_\_\_\_ Acres 264 Lease No. 53126  
 Well (Farm) No. \_\_\_\_\_ Serial No. 8246  
 Elevation (Spirit Level) 1205  
 Quadrangle Vadis  
 County Lewis District Freemans Crk.  
 Engineer Wm Bowers  
 Engineer's Registration No. 900  
 File No. \_\_\_\_\_ Drawing No. \_\_\_\_\_  
 Date 10-6-49 Scale 1"=40P

STATE OF WEST VIRGINIA  
 DEPARTMENT OF MINES  
 OIL AND GAS DIVISION  
 CHARLESTON

**WELL LOCATION MAP**  
 FILE NO. LEW-529-A  
WAD 041 90262

+ Denotes location of well on United States Topographic Maps, scale 1 to 62,500, latitude and longitude lines being represented by border lines as shown.

- Denotes one inch spaces on border line of original tracing.



PETROLEUM AND NATURAL GAS.

	Top. Feet.	Bottom. Feet.
Salt Sand.....	646	700
Salt Sand.....	980	1010
Maxton Sand.....	1070	1100
Little Lime.....	1195	1225
Pencil Cave.....	1270	1275
Big Lime.....	1275	1325
Big Injun Sand (gas, 1337').....	1325	1442
Berea Sand.....	1685	1703
Fifty-foot Sand.....	1760	1780
Thirty-foot Sand.....	1860	1875
Gordon Stray Sand.....	1905	1920
Gordon Sand.....	1923	1953
Fifth Sand (gas, 2155-8' and 2160').....	2151	2162
Total depth.....		2173

James R. Bailey No. 49 Well Record (161).

(now 041 30521)  
70262

Freemans Creek District; on Horse Run, 1.2 miles southeast of Freemansburg; authority, Reserve Gas Co.; completed, Feb. 26, 1904; elevation, 1185' B.

	Top. Feet.	Bottom. Feet.
Conductor.....	0	10
Big Dunkard Sand.....	435	460
Burnings Springs Sand.....	480	520
Gas Sand (small gas, 620'; water, 650').....	590	675
Sand, Salt (small gas, 955').....	950	
Sand, Salt.....	1020	1050
Maxton Sand (gas, 1270').....	1260	1275
Total depth.....		1293

Blaine Kershner No. 115 Well Record (164).

4229

Freemans Creek District; on Freemans Creek, 0.9 mile northeast of Freemansburg; authority, Reserve Gas Co.; completed, Aug. 15, 1907; elevation, 1025' B.

	Top. Feet.	Bottom. Feet.
Conductor.....	0	16
Sand, Burning Springs (water at 500').....	500	
Slate and red rock.....		604
Salt Sand.....	721	765
Salt Sand.....	863	890
Salt Sand.....	964	1080
Red rock.....	1082	1105
Maxton Sand.....	1120	1163
Little Lime.....	1205	1220
Big Lime.....	1231	1299
Big Injun Sand.....	1299	1411
Fifty-foot Sand.....	1723	1741
Thirty-foot Sand.....	1828	1884
Gordon Stray and Gordon Sands (gas, 1890').....	1890	1962
Fifth Sand (gas, 2130') to bottom.....	2125	2145





604

STATE OF WEST VIRGINIA  
DEPARTMENT OF MINES  
OIL AND GAS DIVISION

WELL RECORD

Permit No. Ab J 29-A

Oil or Gas Well \_\_\_\_\_  
(KIND)

Company Hope Natural Gas Company.  
 Address 445 West Main St. Clarksburg, W. Va.  
 Farm Jas. R. Bailey Acres 264  
 Location (waters) \_\_\_\_\_  
 Well No. 8246 Elev. 1205  
 District Freemans Creek County Lewis  
 The surface of tract is owned in fee by \_\_\_\_\_  
 Address \_\_\_\_\_  
 Mineral rights are owned by \_\_\_\_\_  
 Address \_\_\_\_\_  
 Drilling commenced January 22, 1904  
 Drilling completed FEBRUARY 26, 1904  
 Date Shot \_\_\_\_\_ From \_\_\_\_\_ To \_\_\_\_\_  
 With \_\_\_\_\_  
 Open Flow \_\_\_\_\_ /10ths Water in \_\_\_\_\_ Inch  
 \_\_\_\_\_ /10ths Merc. in \_\_\_\_\_ Inch  
 Volume \_\_\_\_\_ Cu. Ft.  
 Rock Pressure \_\_\_\_\_ lbs. \_\_\_\_\_ hrs.  
 Oil \_\_\_\_\_ bbls., 1st 24 hrs.  
 Fresh water 650 feet \_\_\_\_\_ feet  
 Salt water none recorded feet \_\_\_\_\_ feet

Casing and Tubing	Used in Drilling	Left in Well	Packers
Size			Kind of Packer
16			
13			
10	136	136	Size of
8 1/2	717	717	
6 5/8	1429	1429	Depth set
5 3/16			
3			Perf. top
2	2250	2250	Perf. bottom
Liners Used			Perf. top
			Perf. bottom

CASING CEMENTED NOT SIZE \_\_\_\_\_ No. Ft. \_\_\_\_\_ Date \_\_\_\_\_  
 COAL WAS ENCOUNTERED AT 45 FEET 36 INCHES  
 \_\_\_\_\_ FEET \_\_\_\_\_ INCHES FEET \_\_\_\_\_ INCHES  
 \_\_\_\_\_ FEET \_\_\_\_\_ INCHES FEET \_\_\_\_\_ INCHES

Formation	Color	Hard or Soft	Top	Bottom	Oil, Gas or Water	Depth Found	Remarks
Coal			45	48			
Dunkard			435	460			
Gas sand			480	520			
Salt sand			590	675	gas	620	water 650
Sand			950	1050			
Maxon			1260	1275	gas	1270	
Little Lime			1315	1340			
Big Lime			1360	1412	show oil & gas	1384	
Big Injun			1412	1525	show gas	1435	
Squaw			1525	1600			
Fifty foot			1830	1845			
Thirty foot			1925	1940			
Gordon stray			1975	2035	gas	2027	
Gordon			2035	2072	gas	2053	
Fifth			2220	2235	gas	2222	
Total depth				2250			





