

39°02'30"

Latitude

80°32'30"

Longitude

1.88s  
.28w

Topo Location

7.5' Loc. \_\_\_\_\_ 15' Loc. \_\_\_\_\_  
\_\_\_\_\_ (calc.) \_\_\_\_\_

Company \_\_\_\_\_

Farm \_\_\_\_\_

15' Quad \_\_\_\_\_  
(sec.)

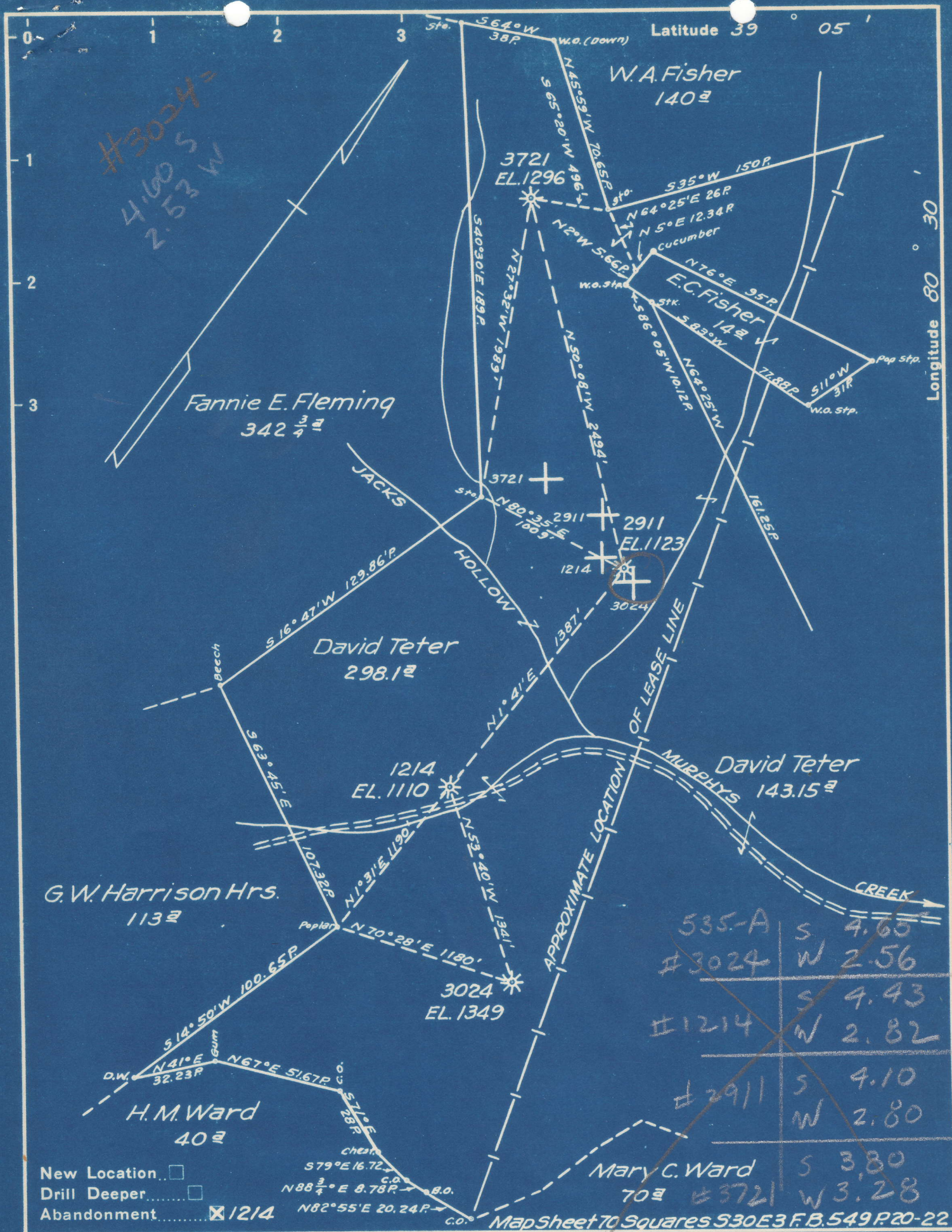
7.5' Quad Camden

District Court House

WELL LOCATION PLAT

County 041 Permit 30535





535-A	S	4.65
#3024	W	2.56
	S	4.43
#1214	W	2.82
	S	4.10
#2911	W	2.80
	S	3.80
#3721	W	3.28

New Location   
 Drill Deeper   
 Abandonment  1214

Company Hope Natural Gas Co.  
 Address Clarksburg, W. Va.  
 Farm David Teter  
 Tract \_\_\_\_\_ Acres 298.1 Lease No. 5189  
 Well (Farm) No. \_\_\_\_\_ Serial No. See Above  
 Elevation (Spirit Level) See Above  
 Quadrangle Vadis  
 County Lewis District Court House  
 Engineer Wm Bowers  
 Engineer's Registration No. 900  
 File No. \_\_\_\_\_ Drawing No. \_\_\_\_\_  
 Date Feb. 1, 1946 Scale 1" = 800'

STATE OF WEST VIRGINIA  
 DEPARTMENT OF MINES  
 OIL AND GAS DIVISION  
 CHARLESTON

**WELL LOCATION MAP**  
 FILE NO. LEW-320-A  
LEW-535-A #3024

+ Denotes location of well on United States Topographic Maps, scale 1 to 62,500, latitude and longitude lines being represented by border lines as shown.

- Denotes one inch spaces on border line of original tracing.





STATE OF WEST VIRGINIA  
DEPARTMENT OF MINES  
OIL AND GAS DIVISION

620

WELL RECORD

Permit No. LEW-535-A Oil or Gas Well \_\_\_\_\_ (KIND)

Company Hope Natural Gas Company.  
Address 445 West Main St. Clarksburg, W. Va.  
Farm David Teter Acres 298  
Location (waters) \_\_\_\_\_  
Well No. 3024 Elev. 1349  
District Courthouse County Lewis  
The surface of tract is owned in fee by \_\_\_\_\_  
Address \_\_\_\_\_  
Mineral rights are owned by \_\_\_\_\_  
Address \_\_\_\_\_  
Drilling commenced July 2, 1913  
Drilling completed August 19, 1913  
Date Shot \_\_\_\_\_ From \_\_\_\_\_ To \_\_\_\_\_  
With \_\_\_\_\_  
Open Flow \_\_\_\_\_ /10ths Water in \_\_\_\_\_ Inch  
\_\_\_\_\_ /10ths Merc. in \_\_\_\_\_ Inch  
Volume \_\_\_\_\_ Cu. Ft.  
Rock Pressure \_\_\_\_\_ lbs. \_\_\_\_\_ hrs.  
Oil \_\_\_\_\_ bbls., 1st 24 hrs.  
Fresh water none recorded feet \_\_\_\_\_ feet  
Salt water none recorded feet \_\_\_\_\_ feet

Casing and Tubing	Used in Drilling	Left in Well	Packers
Size			Kind of Packer
16			
13			
10	145	145	Size of
8 1/4	1025	1025	Depth set
6 5/8	2153	2153	Perf. top
5 3/16	2746	2746	Perf. bottom
3			Perf. top
2			Perf. bottom
Liners Used			

CASING CEMENTED NOT SIZE \_\_\_\_\_ No. Ft. \_\_\_\_\_ Date \_\_\_\_\_  
COAL WAS ENCOUNTERED AT 402 FEET 36 INCHES  
461 FEET 24 INCHES FEET INCHES  
FEET INCHES FEET INCHES

Formation	Color	Hard or Soft	Top	Bottom	Oil, Gas or Water	Depth Found	Remarks
Native coal			402	405			
Pittsburgh Coal			461	463			
Little Dunkard			870	885			
Big Dunkard			925	976			
Gas sand			1025	1131			
First Salt			1173	1287			
Second Salt			1382	1437			
Third Salt			1463	1620			
Maxon			1929	1954			
Little Line			2031	2043			
Pencil cave			2043	2052			
Big Line			2052	2112			
Big Injun			2112	2291	gas	2241	
Squaw			2315	2340			
Gantz			2463	2477			
Fifty foot			2621	2635			
Thirty foot			2643	2652	gas	2648	
Gordon stray			2703	2721	gas	2716	
Fifth			2911	2921	gas	2912	
Total depth				2928			

