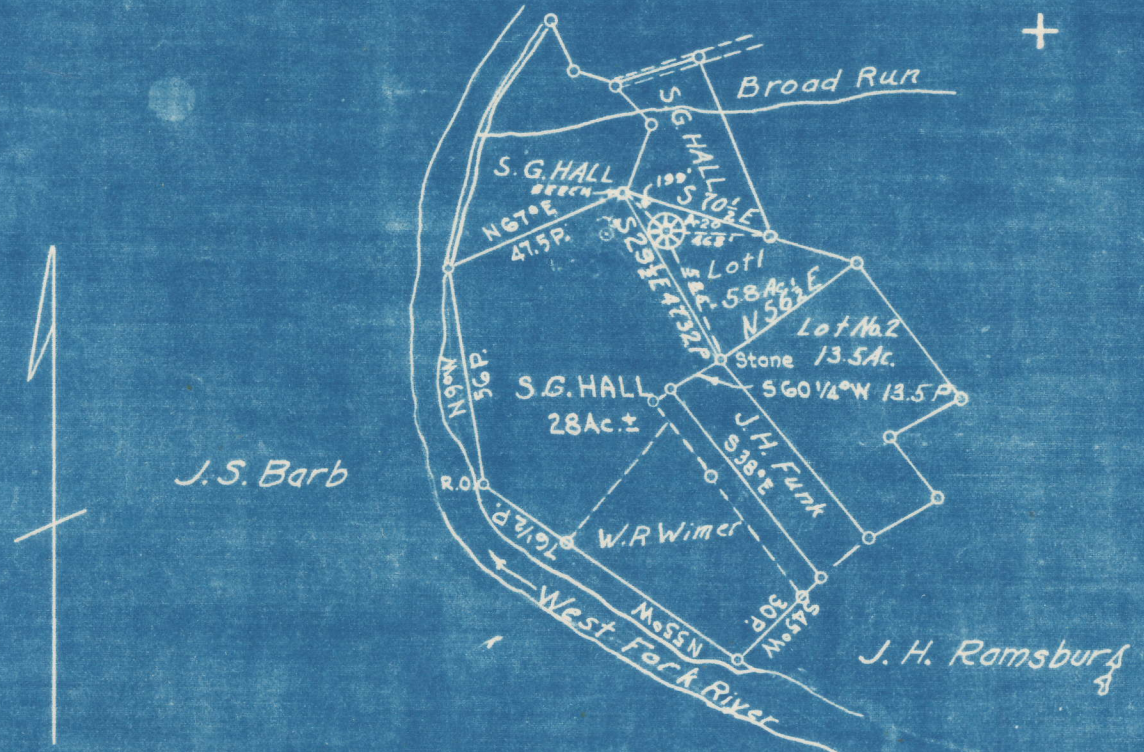


0 1 2 3 LATITUDE 39 ° 10'

1 2.88 S  
1.71 W  
80 ° 25' LONGITUDE



COAL OWNED BY Florence E Bailey and B. T. Bailey

NEW LOCATION...   
 DRILL DEEPER...   
 ABANDONMENT...

~~S 2.90  
W 1.72~~

COMPANY The Cumberland & Allegheny Gas Co.  
 ADDRESS 800 Union Trust Bldg. Pittsburgh Pa.  
 FARM SG Hall  
 TRACT 1 ACRES 28 ± LEASE No. 280  
 WELL (FARM) No. 1 SERIAL No. 20  
 ELEVATION (SPIRIT LEVEL) 1020'  
 QUADRANGLE Weston S.W. 1/4  
 COUNTY Lewis DISTRICT Hackers Creek  
 ENGINEER Thomas E. Virgin WC  
 ENGINEER'S REGISTRATION No. 1503  
 FILE No. \_\_\_\_\_ DRAWING No. Y-13-414  
 DATE 6/8/50 SCALE 1" = 800'

STATE OF WEST VIRGINIA  
 DEPARTMENT OF MINES  
 OIL AND GAS DIVISION  
 CHARLESTON

WELL LOCATION MAP

FILE No. LEW-558-A

+ DENOTES LOCATION OF WELL ON UNITED STATES TOPOGRAPHIC MAPS, SCALE 1 TO 62,500. LATITUDE AND LONGITUDE LINES BEING REPRESENTED BY BORDER LINES AS SHOWN.  
 - DENOTES ONE INCH SPACES ON BORDER LINE OF ORIGINAL TRACING.



STATE OF WEST VIRGINIA  
DEPARTMENT OF MINES  
OIL AND GAS DIVISION

647

WELL RECORD

Permit No. 1558A Oil or Gas Well (KIND)

Company Cumberland & Allegheny Gas Company  
 Address 800 Union Trust Bldg., Pittsburgh, Pa.  
 Farm S. J. Hall Acres 16  
 Location (waters) \_\_\_\_\_  
 Well No. 1-20 Elev. 1020  
 District Hackers Creek County Lewis  
 The surface of tract is owned in fee by Bertha J. Hall  
R. D. 2 Address Jane Law, W. Va.  
 Mineral rights are owned by Cumberland & Allegheny Gas Co.  
800 Union Trust Bldg. Address Pittsburgh, Pa.  
 Drilling commenced June 26, 1907  
 Drilling completed August 17, 1907  
 Date Shot From \_\_\_\_\_ To \_\_\_\_\_  
 With \_\_\_\_\_

Casing and Tubing	Used in Drilling	Left in Well	Packers
Size			Kind of Packer
16			
13			
10	230	Pulled	Size of
8 1/4	715	715	6-5/8x3
6 5/8	1231	1231	Depth set 1835
5 3/16			
3			Perf. top
2			Perf. bottom
Liners Used			Perf. top
			Perf. bottom

Open Flow /10ths Water in \_\_\_\_\_ Inch  
 /10ths Merc. in \_\_\_\_\_ Inch  
 Volume \_\_\_\_\_ Cu. Ft.  
 Rock Pressure \_\_\_\_\_ lbs. \_\_\_\_\_ hrs.  
 Oil \_\_\_\_\_ bbls., 1st 24 hrs.  
 Fresh water \_\_\_\_\_ feet \_\_\_\_\_ feet  
 Salt water \_\_\_\_\_ feet \_\_\_\_\_ feet

CASING CEMENTED \_\_\_\_\_ SIZE \_\_\_\_\_ No. Ft. \_\_\_\_\_ Date \_\_\_\_\_

COAL WAS ENCOUNTERED AT \_\_\_\_\_ FEET \_\_\_\_\_ INCHES  
 \_\_\_\_\_ FEET \_\_\_\_\_ INCHES \_\_\_\_\_ FEET \_\_\_\_\_ INCHES  
 \_\_\_\_\_ FEET \_\_\_\_\_ INCHES \_\_\_\_\_ FEET \_\_\_\_\_ INCHES

Formation	Color	Hard or Soft	Top	Bottom	Oil, Gas or Water	Depth Found	Remarks
Little Dunkard			460	470			
Big Dunkard			545	560			
Salt Sand			800	885			
Maxon			980	986			
Blue Monday			1040	1055			
Little Lime			1065	1080			
Pencil Cave			1080	1100			
Big Lime			1100	1180			
Big Injun			1180	1390			
Gantz			1594	1606			
Fifty Foot			1672	1677			
Thirty-Foot			1710	1725			
Gordon Stray			1800	1830			
Gordon			1835	1860			
Fourth			1940	1945			
Fifth			1980	2007			
TOTAL DEPTH				2015			Initial volume not shown on record. 6-5/8x3 Anchor Packer set at 1835.

