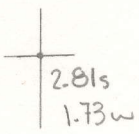


Latitude

Longitude



Topo Location

7.5' Loc. _____ 15' Loc. _____
 _____ (calc.) _____

Company _____

Farm _____

15' Quad _____
(sec.)

7.5' Quad Camden

District Count House

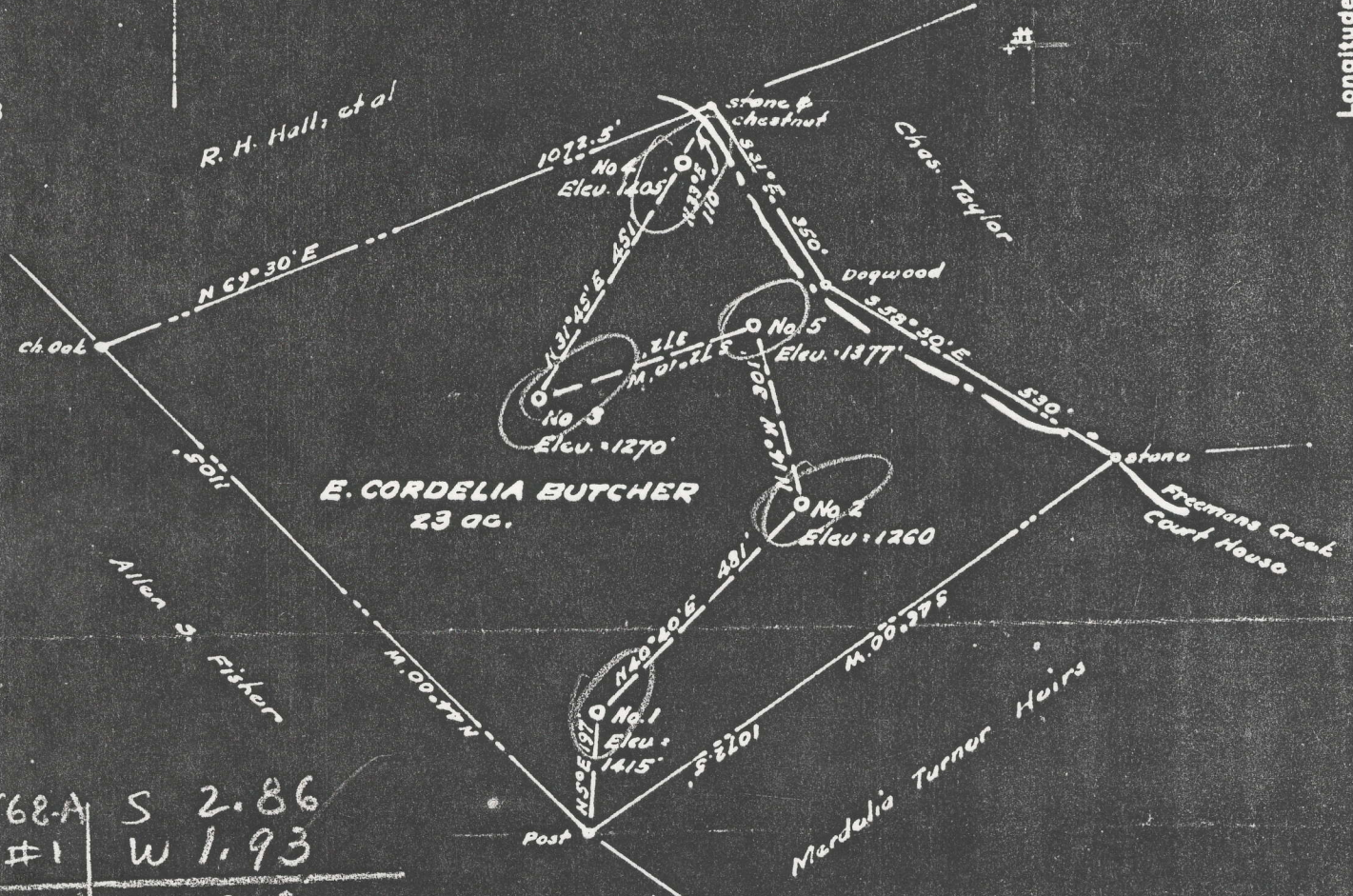
WELL LOCATION PLAT

County 049 Permit 30561

Latitude 0 05 1

Longitude 80 0 30 1

568	1	2.81 S	1.90 W
569	2	2.80 S	1.80 W
570	3	2.78 S	1.87 W
561	4	2.73 S	1.85 W



568-A	S	2.86
#1	W	1.93
569-A	S	2.82
#2	W	1.82
570-A	S	2.81
#3	W	1.90
561-A	S	2.76
#4	W	1.87

571-A S 2.76
#5 W 1.82

- LEW-568-A-#1
- LEW-569-A-#2
- LEW-570-A-#3
- LEW-561-A-#4
- LEW-571-A-#5

New Location...
 Drill Deeper.....
 Abandonment.....

Surface and coal owned by Albert Arbogast,
 Route 3, Weston, W. Va.

Company VALLEY STEEL PRODUCTS CO.
 Address 124 SIDNEY ST. ST. LOUIS, 4 MO
 Farm E. Cordelia Butcher
 Tract _____ Acres 23 Lease No. _____
 Well (Farm) No. 1, 2, 3, 4, 5 Serial No. _____
 Elevation (Spirit Level) 1415, 1260, 1270, 1405, 1377
 Quadrangle Vadis
 County Lewis District Court House
 Engineer M. S. Blair Jr.
 Engineer's Registration No. 1227 **SE**
 File No. _____ Drawing No. _____
 Date August 1950 Scale 1" = 300'

STATE OF WEST VIRGINIA
 DEPARTMENT OF MINES
 OIL AND GAS DIVISION
 CHARLESTON

WELL LOCATION MAP
 FILE NO. See Above

+ Denotes location of well on United States Topographic Maps, scale 1 to 62,500, latitude and longitude lines being represented by border lines as shown.
 - Denotes one inch spaces on border line of original tracing.



642

STATE OF WEST VIRGINIA
DEPARTMENT OF MINES
OIL AND GAS DIVISION

WELL RECORD

Permit No. Ab 561-A Drilled January 1921 by Southern Oil Co.

Oil or Gas Well Oil
(KIND)

Company Valley Steel Products Co.,
Address 124 Sidney St., St. Louis, Mo.
Farm E. Cordelia Butcher Acres 23
Location (waters) Branch of Murphy's Run
Well No. 4 Elev. 1405
District Court House County Lewis
The surface of tract is owned in fee by E. Cordelia Butcher
Address Weston, W. Va.
Mineral rights are owned by E. Cordelia Butcher
Address Weston, W. Va.
Drilling commenced January 24, 1921
Drilling completed February 18th, 1921
Date Shot Feb. 19, 1921 from 1412 To 1420
With 20qts.

Casing and Tubing	Used in Drilling	Left in Well	Packers
Size			Kind of Packer
16			
13			
10			Size of
8 1/4	<u>584</u>	<u>none</u>	
6 5/8	<u>1160</u>	<u>1160</u>	Depth set
5 3/16			
3			Perf. top
2			Perf. bottom
Liners Used			Perf. top
			Perf. bottom

Open Flow /10ths Water in _____ Inch
/10ths Merc. in _____ Inch
Volume 7 bailers Cu. Ft.
Rock Pressure none reported lbs. hrs.
Oil yes, no amount reported bbls., 1st 24 hrs.
Fresh water none reported feet feet
Salt water none reported feet feet

CASING CEMENTED _____ SIZE _____ No. Ft. _____ Date _____
no pipe cemented

COAL WAS ENCOUNTERED AT 145 FEET 24 INCHES
~~none reported~~
FEET INCHES 594 FEET 72 INCHES
FEET INCHES _____ FEET INCHES _____

Formation	Color	Hard or Soft	Top	Bottom	Oil, Gas or Water	Depth Found	Remarks
conductor			12 feet				
Coal			145	147			
"			594	600			
Water				1026			
Sand			1125	1205			
Shale			1205	1228			
Sand			1228	1248			
Salt Sand			1295		Gas	1346	a little
Oil Pay			1412	1420	Oil	1412	
Salt Sand				1427		1420	
			Total Depth 1434				

Record furnished by the Southern Oil Co., who drilled the well

