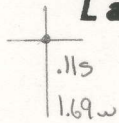


**Latitude**



**Longitude**

**Topo Location**

7.5' Loc. \_\_\_\_\_ 15' Loc. \_\_\_\_\_  
 \_\_\_\_\_ (calc.) \_\_\_\_\_

**Company** \_\_\_\_\_

**Farm** \_\_\_\_\_

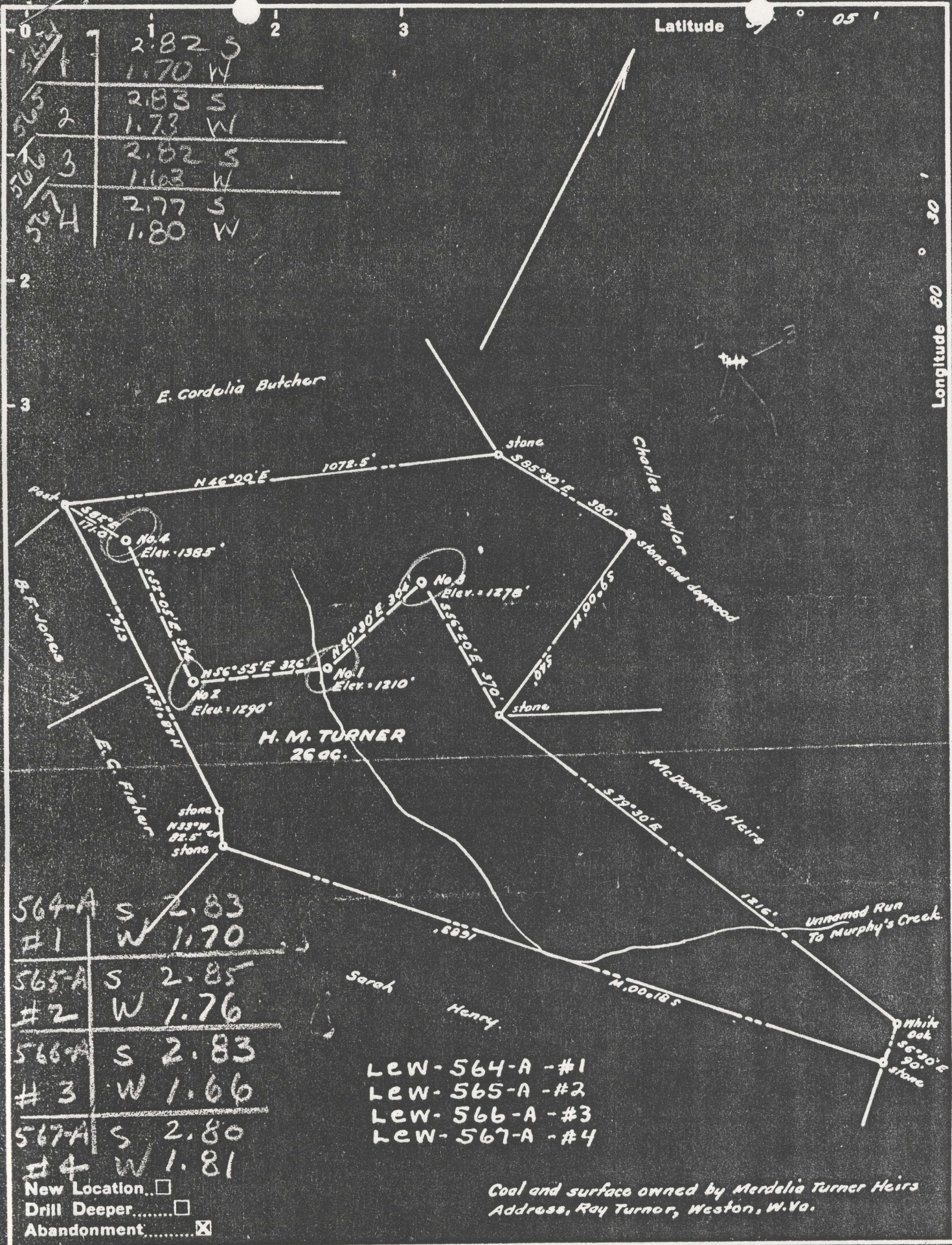
**15' Quad** \_\_\_\_\_  
(sec.)

**7.5' Quad** Camden

**District** Count House

**WELL LOCATION PLAT**

**County** 041 **Permit** 30567



564-A	S	2.83
#1	W	1.70
565-A	S	2.85
#2	W	1.76
566-A	S	2.83
#3	W	1.66
567-A	S	2.80
#4	W	1.81

- Lew-564-A - #1
- Lew-565-A - #2
- Lew-566-A - #3
- Lew-567-A - #4

New Location...   
 Drill Deeper.....   
 Abandonment.....

Coal and surface owned by Mardelia Turner Heirs  
 Address, Ray Turner, Weston, W.Va.

Company VALLEY STEEL PRODUCTS CO.  
 Address 124 S. SENECA ST. ST. LOUIS 4, MO.  
 Farm H.M. Turner  
 Tract \_\_\_\_\_ Acres 26 Lease No. \_\_\_\_\_  
 Well (Farm) No. 1, 2, 3, 4 Serial No. \_\_\_\_\_  
 Elevation (Spirit Level) 1: 1210', 2: 1290', 3: 1278', 4: 1385'  
 Quadrangle Yadis  
 County Lewis District Court House \_\_\_\_\_  
 Engineer W. J. SE  
 Engineer's Registration No. 1227  
 File No. \_\_\_\_\_ Drawing No. \_\_\_\_\_  
 Date August 1950 Scale 1" = 300'

STATE OF WEST VIRGINIA  
 DEPARTMENT OF MINES  
 OIL AND GAS DIVISION  
 CHARLESTON

**WELL LOCATION MAP**

FILE NO. \_\_\_\_\_

+ Denotes location of well on United States Topographic Maps, scale 1 to 62,500, latitude and longitude lines being represented by border lines as shown.

- Denotes one inch spaces on border line of original tracing.



STATE OF WEST VIRGINIA  
DEPARTMENT OF MINES  
OIL AND GAS DIVISION

661

Permit No. 567-A

Well drilled in 1917 by Southern Oil Company

Oil or Gas Well X (KIND)

Company VALLEY STEEL PRODUCTS COMPANY  
 Address 124 Sidney Street - St. Louis, Mo.  
 Farm H. M. Turner Acres 26  
 Location (waters) Branch of Murphy's Crk  
 Well No. 4 Elev. 1385'  
 District Court House County Lewis  
 The surface of tract is owned in fee by H. M. Turner  
 Address Weston, W. Va.  
 Mineral rights are owned by Same  
 Address \_\_\_\_\_  
 Drilling commenced Fall of 1917  
 Drilling completed December 24, 1917  
 Date Shot From 1441 $\frac{1}{2}$  To 1449'  
 With 30 qts. Glycerine  
 Open Flow /10ths Water in \_\_\_\_\_ Inch  
/10ths Merc. in \_\_\_\_\_ Inch  
 Volume \_\_\_\_\_ Cu. Ft.  
 Rock Pressure \_\_\_\_\_ lbs. \_\_\_\_\_ hrs.  
 Oil not reported bbls., 1st 24 hrs.  
 Fresh water \_\_\_\_\_ feet \_\_\_\_\_ feet  
 Salt water \_\_\_\_\_ feet \_\_\_\_\_ feet

Casing and Tubing	Used in Drilling	Left in Well	Packers
Size			Kind of Packer
16			
13			
10	315	--	Size of
8 $\frac{1}{4}$	700	700	
6 $\frac{5}{8}$	1130	1130	Depth set
5 3/16			
3			Perf. top
2	1453	1453	Perf. bottom
Liners Used			Perf. top
			Perf. bottom

CASING CEMENTED \_\_\_\_\_ SIZE \_\_\_\_\_ No. Ft. \_\_\_\_\_ Date \_\_\_\_\_  
 COAL WAS ENCOUNTERED AT \_\_\_\_\_ FEET \_\_\_\_\_ INCHES  
 \_\_\_\_\_ FEET \_\_\_\_\_ INCHES FEET \_\_\_\_\_ INCHES  
 \_\_\_\_\_ FEET \_\_\_\_\_ INCHES FEET \_\_\_\_\_ INCHES

Formation	Color	Hard or Soft	Top	Bottom	Oil, Gas or Water	Depth Found	Remarks
NO	COAL REPORTED ON ORIGINAL WELL LOG				FURNISHED BY SOUTHERN OIL COMPANY		
Salt Sand			1440	1452	Gas 1440' Oil 1442'-1448'		
							Total Depth about 1448'

*(Handwritten red scribble)*

JUN 24 1951