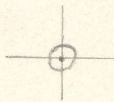


LATITUDE 39° 05' 00"



80° 30' 00"
LONGITUDE

7'5 OGIS topo location

7.5' loc 0415 15' loc _____
 1.98W (calc.) _____

Company _____

Farm _____

WELL LOCATION MAP

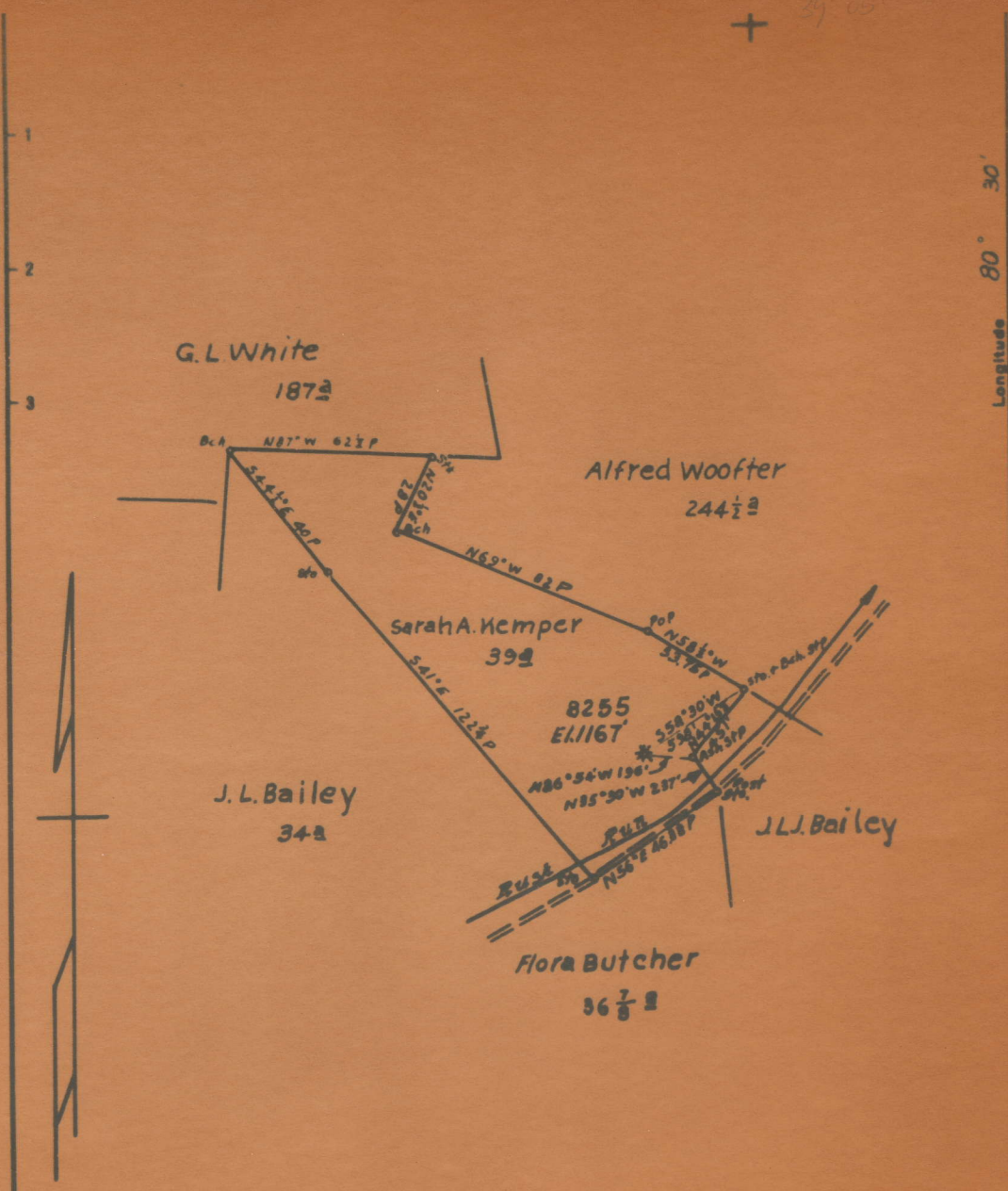
File No. 041-586A

Quad CAMDEN 7 1/2'

County Lewis

District FREEMANS CREEK

29° 05'



Low
5860
#1255

Longitude 80° 30'

New Location
 Drill Deeper
 Abandonment

Map Sh. 69 526 E4 FB 950 P-3-4

Company Hope Natural Gas Co.
 Address Clarksburg, W.Va.
 Farm Sarah A. Kemper
 Tract _____ Acres 39 Lease No. 53135
 Well (Farm) No. _____ Serial No. 8255

STATE OF WEST VIRGINIA
 DEPARTMENT OF MINES
 OIL AND GAS DIVISION
 CHARLESTON

WELL LOCATION MAP



STATE OF WEST VIRGINIA
DEPARTMENT OF MINES
OIL AND GAS DIVISION

674

WELL RECORD

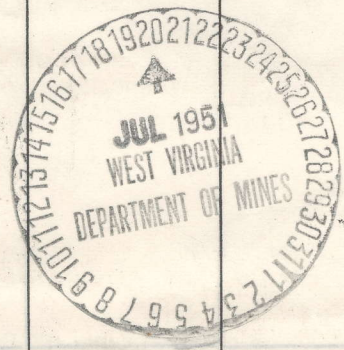
Permit No. LEW-586-A Gas Well (KIND)

Company Hope Natural Gas Company.
Address 445 West Main St. Clarksburg, W. Va.
Farm Sarah A. Kemper. Acres 39
Location (waters) _____
Well No. 8255 Elev. 1167
District Freemans Creek County Lewis.
The surface of tract is owned in fee by _____
Address _____
Mineral rights are owned by _____
Address _____
Drilling commenced May 22, 1913
Drilling completed June 23, 1913
Date Shot From _____ To _____
With _____
Open Flow /10ths Water in _____ Inch
/10ths Merc. in _____ Inch
Volume _____ Cu. Ft.
Rock Pressure _____ lbs. _____ hrs.
Oil _____ bbls., 1st 24 hrs.
Fresh water none recorded feet _____ feet
Salt water none recorded feet _____ feet

Casing and Tubing	Used in Drilling	Left in Well	Packers
Size			Kind of Packer
16			
13			
10	211	Pulled	Size of
8 1/4	804	804	
6 5/8	1400	1400	Depth set
5 3/16	1948	1948	
3			Perf. top
2	2252	2252	Perf. bottom
Liners Used			Perf. top
			Perf. bottom

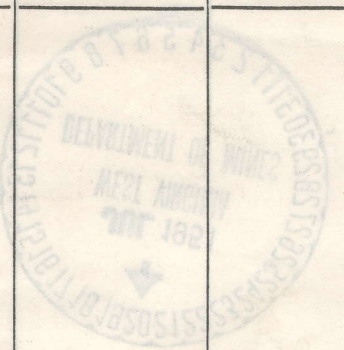
CASING CEMENTED NOT SIZE _____ No. Ft. _____ Date _____
COAL WAS ENCOUNTERED AT 300 FEET 48 INCHES
FEET INCHES FEET INCHES
FEET INCHES FEET INCHES

Formation	Color	Hard or Soft	Top	Bottom	Oil, Gas or Water	Depth Found	Remarks
Native coal			300	304			
Little Dunkard			330	335			
Big Dunkard			470	510			
Gas sand			515	595			
First Salt			605	670			
Second Salt			730	750			
Maxon			1140	1150			
Little Lime			1290	1305			
Pencil cave			1305	1328			
Big Lime			1328	1385			
Big Injun			1385	1507			
Squaw			1512	1545			
Gantz			1625	1635			
Fifty foot			1710	1730			
Thirty foot			1790	1808	show gas	1805	
Gordon stray			1934	1948	gas	1936	
Gordon			1978	2007	gas	2003	
Fourth			2010	2055	Show gas	2042	
Fifth			2202	2223	gas	2204	
Total depth				2241			



JAN 16 1952 (Over)

Formation	Color	Hard or Soft	Top	Bottom	Oil, Gas or Water	Depth Found	Remarks
				3307			
			3305	3303	Gas	3304	
			3310	3022	Gas	3015	
			1348	3001	Gas	3003	
			1337	1378	Gas	1379	
			1380	1388	Gas	1382	
			1370	1380	Gas		
			1352	1352			
			1373	1372			
			1362	1361			
			1338	1332			
			1302	1338			
			1330	1302			
			1170	1120			
			120	120			
			92	90			
			272	262			
			110	10			
			300	300			



Formation	Color	Hard or Soft	Top	Bottom	Oil, Gas or Water	Depth Found	Remarks
20 ft water	White	Soft	1000	1000	LEVEL	LEVEL	INCHES
15 ft water	White	Soft	1000	1000	LEVEL	LEVEL	INCHES
Oil					COULD NOT BE DETERMINED	300	LEVEL INCHES
Loose							
Open flow							
Water							
Depth 200							Level bottom
Depth 300							Level top
Depth 400							Level bottom
Depth 500							Level top
Depth 600							Level top
Depth 700							Level top
Depth 800							Level top
Depth 900							Level top
Depth 1000							Level top
Depth 1100							Level top
Depth 1200							Level top
Depth 1300							Level top
Depth 1400							Level top
Depth 1500							Level top
Depth 1600							Level top
Depth 1700							Level top
Depth 1800							Level top
Depth 1900							Level top
Depth 2000							Level top

OIL AND GAS DIVISION
 DEPARTMENT OF MINES
 STATE OF WEST VIRGINIA

Date July 16, 1951, 19____
 Hope Natural Gas Company.
 APPROVED _____, Owner



By B. R. NUZUM
 (Title) _____
 Superintendent