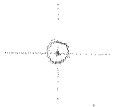


LATITUDE 38° 57' 30"

LONGITUDE 80° 35' 00"



7'5 OGIS topo location

7.5' LOC 1.105 15' LOC _____
 1.41w (calc.) _____

Company _____

Farm _____

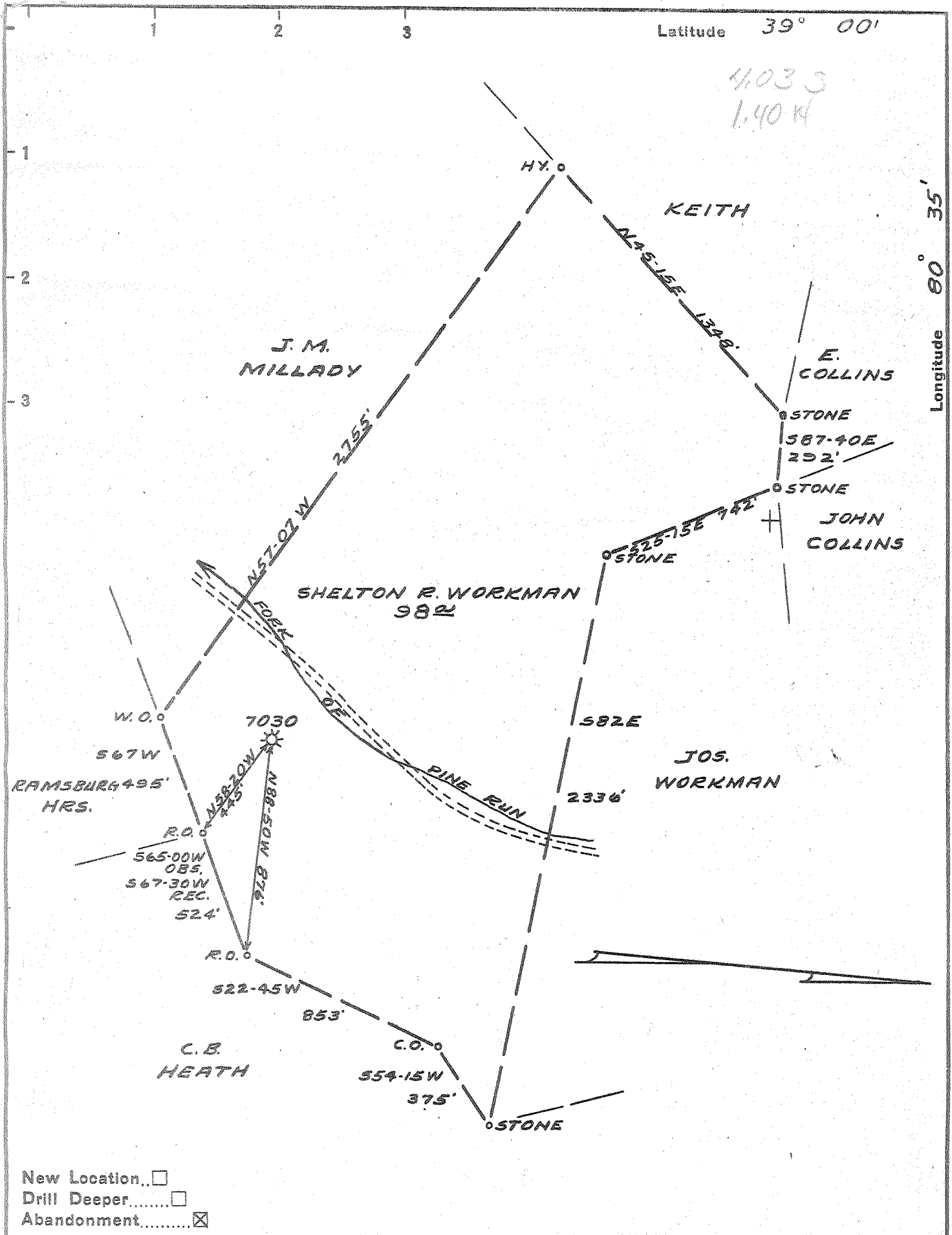
Quad PETERSON 7 1/2'

County LEWIS

District COURTHOUSE

WELL LOCATION MAP

File No. 041-617A



Company EQUITABLE GAS-W.VA. DIV.

Address CLARKSBURG, W.VA.

Farm SHELTON R. WORKMAN

Tract _____ Acres 99 3/4 Lease No. 14373

Well (Farm) No. ONE Serial No. 7030

Elevation (Spirit Level) 1130' V.A.

Quadrangle BURNSVILLE N.E. 13

County LEWIS District COURTHOUSE

Engineer James D. Jeffers

Engineer's Registration No. 1084

File No. VOL. 158 P. 123 Drawing No. _____

Date JULY 3, 1953 Scale 1" = 500'

STATE OF WEST VIRGINIA
DEPARTMENT OF MINES
OIL AND GAS DIVISION
CHARLESTON

WELL LOCATION MAP
FILE NO. LEW-617-A

+ Denotes location of well on United States Topographic Maps, scale 1 to 62,500, latitude and longitude lines being represented by border lines as shown.

- Denotes one inch spaces on border line of original tracing.

K.B.M.



STATE OF WEST VIRGINIA
DEPARTMENT OF MINES
OIL AND GAS DIVISION

712

WELL RECORD

Permit No. 67-A

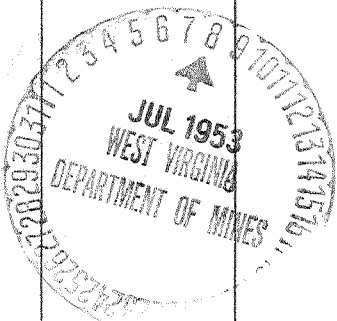
Oil or Gas Well "G/S"
(KIND)

Company Equitable Gas Company-West Va Div.
Address Clarksburg, West Va.
S. H. Workman
Farm Burnsville N/E. 1-3 Acres 99
Location (waters) 7190
Well No. 7190 Elev. 1130' VA
District Court House County Lewis
The surface of tract is owned in fee by Joseph Workman
Carolina, W. Va.
Address Dora H. Workman
Mineral rights are owned by 23 Maple Street
Alexandria, Va.
Address
Drilling commenced July 27, 1915
Drilling completed September 13, 1915
Date Shot _____ From _____ To _____
With _____
Open Flow _____ /10ths Water in _____ Inch
_____ /10ths Merc. in _____ Inch
Volume _____ Cu. Ft.
Rock Pressure _____ lbs. _____ hrs.
Oil _____ bbls., 1st 24 hrs.
Fresh water _____ feet _____ feet
Salt water _____ feet _____ feet

Casing and Tubing	Used in Drilling	Left in Well	Packers
Size			Kind of Packer
16			
18			
10	<u>127'</u>	<u>127'</u>	Size of
8 1/4	<u>156'</u>	<u>None</u>	
6 5/8	<u>2125'</u>	<u>2125'</u>	Depth set
5 3/16	<u>2507'</u>	<u>2507'</u>	
3			Perf. top
2			Perf. bottom
Liners Used			Perf. top
			Perf. bottom

CASING CEMENTED _____ SIZE _____ No. Ft. _____ Date _____
COAL WAS ENCOUNTERED AT 672 FEET 60 INCHES
1336 FEET 24 INCHES 1468 FEET 24 INCHES
_____ FEET _____ INCHES _____ FEET _____ INCHES
_____ FEET _____ INCHES _____ FEET _____ INCHES

Formation	Color	Hard or Soft	Top	Bottom	Oil, Gas or Water	Depth Found	Remarks
Clay	Yellow	Soft	0	10			
Slate	Light	"	10	218			
Sand	White	Open	218	260			
Slate	"	Soft	260	295			
Red Rock	Red	"	295	315			
Lime	White	Hard	315	330			
Slate	"	Soft	330	520			
Red Rock	Red	"	520	535			
Slate	Dark	"	535	635			
Red Rock	Red	"	635	645			
Lime	White	Hard	645	660			
Slate	"	Soft	660	672			
Coal	Black	"	672	677			
Slate	Dark	Soft	677	785			
Lime	White	Hard	785	805			
Slate	Dark	Soft	805	820			
Lime	White	Hard	820	842			
Slate	Dark	Soft	842	848			
Lime	White	Hard	848	865			
Slate	Dark	Soft	865	915			
Sand	White	Hard	915	960			
Slate	Dark	Soft	960	1025			
Lime	White	Hard	1025	1150			
Slate	Dark	Soft	1150	1118			
Lime	White	Hard	1118	1150			
Sand	"	"	1150	1188			
Slate	Dark	Soft	1188	1240			
Sand	Brown	Hard	1240	1280			
Slate	White	Soft	1280	1300			
Lime	Dark	Hard	1300	1336			
Coal	Black	Soft	1336	1338			
Slate	Dark	"	1338	1346			
Sand	White	Hard	1346	1425			
Slate	Dark	Soft	1425	1468			
Coal	Black	"	1468	1470			
Slate	Dark	"	1470	1605			
Sand	White	Hard	1605	1670			
Slate	"	Soft	1670	1678			
Sand	"	Hard	1678	1740			



Formation	Color	Hard or Soft	Top	Bottom	Oil, Gas or Water	Depth Found	Remarks
Slate	Dark	Soft	1740	1795			
Sand	White	Hard	1795	1830	Gas	1797'	
Slate	Dark	Soft	1830	1850			
Red Rock	Red	"	1850	1880			
Lime	White	Hard	1880	1912			
Sand	"	"	1912	1975			
Red Rock	Red	Soft	1975	2000			
Slate&Shells	Dark	"	2000	2030			
Lime	"	Hard	2030	2050			
Slate	White	Soft	2050	2055			
Little Lime	"	Hard	2055	2075			
Pencil Cave	Dark	Soft	2075	2093			
Big Lime	White	Hard	2093	2145			
Big Injun	"	"	2145	2315			
Lime	Dark	Hard	2315	2330			
Slate Shells	"	Soft	2330	2390			
Lime Shells	"	Hard	2390	2465			
Slate Shells	"	Soft&Hard	2465	2486			
Lime	"	Hard	2486	2520			
Slate	White	Soft	2520	2609			
Sand	"	Hard	2609	2628			
Slate&Shells	"	Soft	2628	2653			
Red Rock	Red	"	2653	2658			
Lime	White	Hard	2658	2665			
Slate	"	Soft	2665	2683			
Gordon Stray	"	Hard	2683	2695	Gas	2691-2695'	
Slate	Dark	Soft	2695	2711			
Gordon Sand	White	Hard	2711	2744	Gas	2714-2719'	
Slate	Dark	Soft	2744	2766	Gas	2731-2735'	
Un-Recorded			2766	2768			
Total Depth.....				2768			

01

June 16th, 1949

Date _____, 19____

EQUITABLE GAS COMPANY—WEST VA DIV.

APPROVED _____, Owner

By W. M. M. M. M.
(Title)

The Philadelphia Company of West Virginia

Record of Well No. 7030 Located on S. R. Workman Farm June 1st/15 19
 Court House District Lewis County West Va. State
 Division I District No. 13 Drilled under Well Order 257
 Rig built by John Craig Began July 10th 1915 Completed 7/13th/15 19
 Well drilled by W. E. Barnhart Began July 27th 1915 Completed 9/15/1915 19
 Depth of Well 2768 feet. Slate Size of Hole 5-2/16" Producing Gas
 Elevation = 3 1/30 Ground Level

CASED WITH **REMARKS**

AMOUNT	SIZE	KIND	REMARKS
16'	12"	Wood	
127'	10"	Casg	
856'	8"	"	
2125'	6-5/8"	"	6" X 6-5/8" Bottom Hole Packer
2507'	5-2/16"	"	6-5/8" X 5-2/16" Bottom Hole Packer

COAL VEINS

FORMATIONS

NAME	TOP	BOTTOM	OIL	GAS	WATER	REMARKS
Little Line	2055	2075				<i>From June 1st June 1915</i>
Big Line	2092	2145				
Big Injun	2145	2215				
Line Shells	2290	2465		2405		smell.
Gordon Stray	2582	2695		2685	40	5/10ths water in 1" 24 MCF
Gordon Sand	2711	2744		2716	40	48/10ths water in 2" 292 MCF
				2721	40	60/10ths water in 2" 327 MCF
				2735		

*Aug 4th 1917. G. H. McCall
cleaned Well out and
Subed with 2"*

FIRST PRESSURE TEST IN 5-3/16" CASING

REMARKS

Time	Pressure (lbs.)	Remarks
30 Sec.	5	Shot Gordon sand Sept 14th, 1915
1 Min.	10	1 Shell 5" x 10 pts 2728 to 2735
2 "	15/20/25	75 feet Anchor between shots
5 "	34	1 shell 5" x 10 pts 2721 to 2714
10 "	70	35' anchor below 1 shell.
15 "	20" in 11"	Increased flow from 2/10ths wat
30 "		to 4/10ths water 5-3/16"
Rock Pressure	300 " in 18 hrs	
Taken	Sept 15th 1915	
By	J. W. Lenley	

WELL TUBED AND PACKED Aug 21 1917

136 ft to 2768' - 2" Tubing
 5 3/16 x 2 line packer
 14 ft to 256' of 2" in anchor

FIRST PRESSURE TEST IN 2" TUBING

REMARKS

Time	Pressure (lbs.)	Remarks
30 Sec.	11	Aug 21 - 18/10 7/2"
1 Min.	22	⇒ 179 MCF
2 "	35	40/70
5 "	60	
10 "	97	
20 "	125	
30 "		
Rock Pressure	202 " in 24 hrs	
Taken	Aug 21 1917	
By	Glenn Hill	

MATERIAL FOR THIS WELL RECEIVED FROM FOLLOWING SOURCES:

used Riv from 700 B in Repairing Mill
 4392' MW Lbr from H. K. Burnett

NAME	TOP	BOTTOM	OIL	GAS	WATER	REMARKS
Clay	00	10				
Slate	10	218				
Sand	218	260				
Slate	260	295				
Red Rock	295	315				
Lime	315	330				
Slate	330	520				
Redr Rock	520	535				
Slate	535	625				
Red Rock	625	645				
Lime	645	660				
Slate	660	682				
Coal	682	677				
Slate	677	785				
Lime	785	805				
Slate	805	820				
Lime	820	842				
Slate	842	848				
Lime	848	865				
Slate	865	915				
Sand	915	960				
Slate	960	1025				
Lime	1025	1100				
Slate	1100	1118				
Lime	1118	1150				
Sand	1150	1188				
Slate	1188	1240				
Sand	1240	1280				
Slate	1280	1300				
Lime	1300	1326				
Coal	1326	1328				
Slate	1328	1346				
Sand	1346	1425				
Slate	1425	1468				
Coal	1468	1470				
Slate	1470	1605				
Sand	1605	1670				
Slate	1670	1678				
Sand	1678	1740				
Slate	1740	1795				
Sand	1795	1820				
Slate	1820	1850				
Redr Rock	1850	1890				
Lime	1890	1912				
Sand	1912	1975				
Redr Rock	1975	2000				
Slate & Shells	2000	2030				
Lime	2030	2050				
Slate	2050	2055				
Lime	2055	2075				
Slate	2075	2092				
Big Lime	2092	2145				
Big Injun	2145	2315				
Lime	2315	2330				
Slate & Shells	2330	2390				
Lime Shells	2390	2465				
Slate & Shells	2465	2486				
Lime	2486	2520				
Slate	2520	2609				
Sand	2609	2628				
Slate & Shells	2628	2652				
Red Rock	2652	2658				
Lime	2658	2665				
Slate	2665	2682				
Gordon Stray	2682	2695				
Slate	2695	2711				2691 to 2695
Gordon sand	2711	2744				
Slate	2744	2735				total depth. 2714 to 2719 2721 to 2725

1794

little smell.

2405

2691 to 2695

total depth. 2714 to 2719 2721 to 2725