

Latitude

Longitude

2.16s
.78w

Topo Location

7.5' Loc. _____ 15' Loc. _____
_____ (calc.) _____

Company _____

Farm _____

15' Quad _____
(sec.)

7.5' Quad Western

District Hockens Creek

WELL LOCATION PLAT

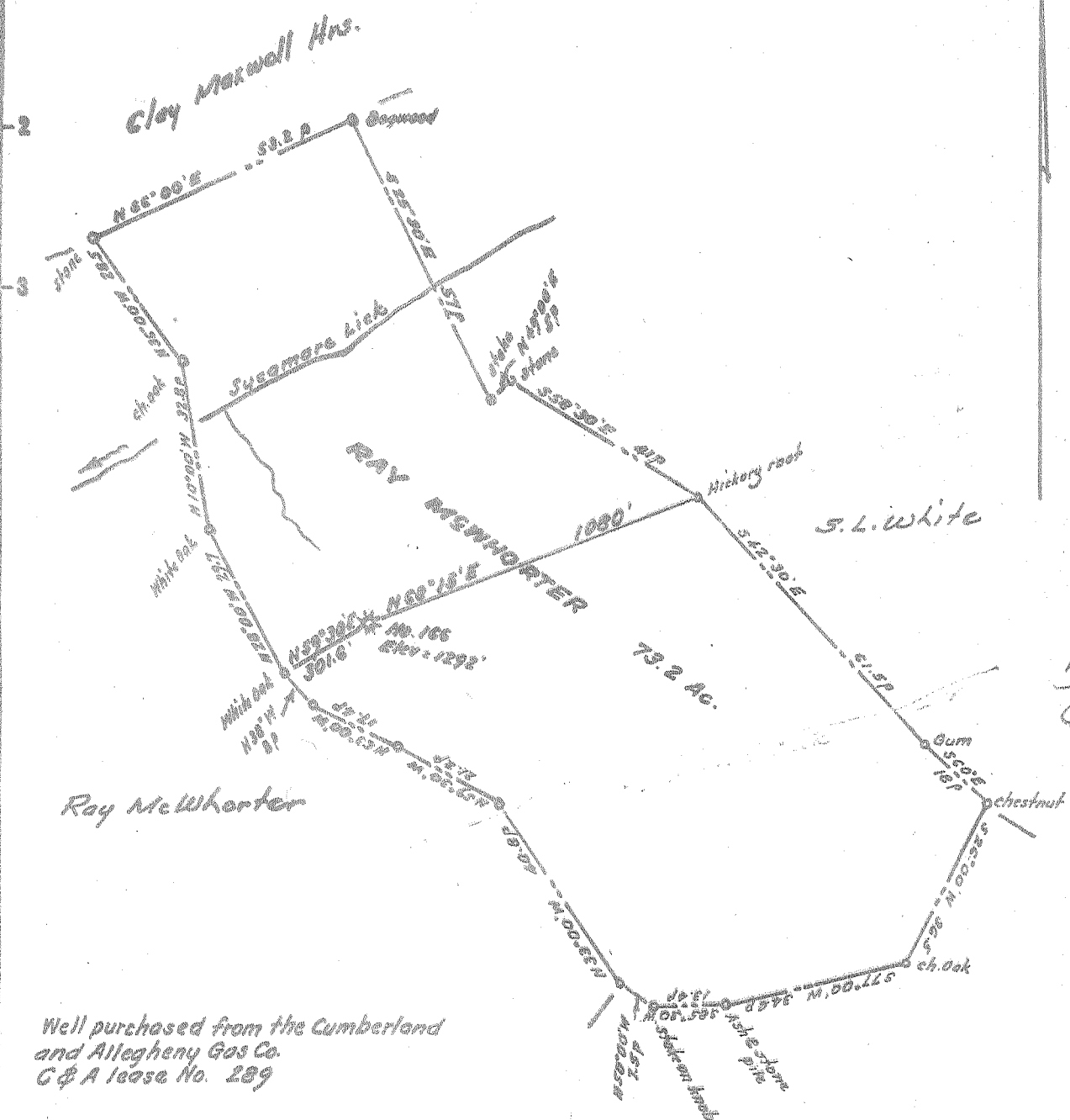
County 041 Permit 30650

Latitude 39° 10'

Longitude 80° 25'

5.00 S
.67 W

5.05
0.67W



Well purchased from the Cumberland and Allegheny Gas Co. C & A lease No. 289

Tract shown is the 73.2 Ac. tract conveyed by Clara Brown to Ray McWhorter, and is a part of the 171 Ac. leased by Andrew Ediston to Eastern Oil Co.

No coal mined in this vicinity Surface owned by Ray McWhorter whose postoffice address is Jone Law, W. Va.

- New Location...
- Drill Deeper.....
- Abandonment.....

Company	WEINER BROTHERS
Address	1307 Clark Bldg., Pittsburgh, Penna.
Farm	Andrew Ediston
Tract	Acres 171 Lease No.
Well (Farm) No.	166 Serial No.
Elevation (Spirit Level)	1292
Quadrangle	Weston
County	Lewis District Hackers Creek
Engineer	<i>W. Ediston Jr.</i>
Engineer's Registration No.	1227
File No.	Drawing No.
Date	Oct, 1955 Scale 1" = 500'

STATE OF WEST VIRGINIA
DEPARTMENT OF MINES
OIL AND GAS DIVISION
CHARLESTON

WELL LOCATION MAP
FILE NO. LEW-650-A

+ Denotes location of well on United States Topographic Maps, scale 1 to 62,500, latitude and longitude lines being represented by border lines as shown.
- Denotes one inch spaces on border line of original tracing.



742

STATE OF WEST VIRGINIA DEPARTMENT OF MINES Formerly: Eastern Oil Company OIL AND GAS DIVISION

Quadrangle Western foot Permit No. 166 (2) Oil or Gas Well (KIND)

WELL RECORD

Company Weiner Brothers (Max Weiner) Address Pittsburgh, Pa. Farm A. Edmiston Acres 171 Location (waters) Well No. 166 (2) Elev. 1742 District Hackers Crk. County Lewis The surface of tract is owned in fee by Address Mineral rights are owned by Address Drilling commenced December 8, 1916 Drilling completed January 26, 1917 Date Shot From To With Open Flow /10ths Water in Inch /10ths Merc. in Inch Volume Cu. Ft. Rock Pressure lbs. hrs. Oil bbls., 1st 24 hrs. Fresh water feet feet Salt water feet feet

Table with columns: Casing and Tubing, Used in Drilling, Left in Well, Packers. Includes data for sizes 16, 13, 10, 8 1/4, 6 1/2, 5 3/16, 3, 2 and packer details like '6-5/8 x 2' and '2100' Cemented'.

CASING CEMENTED SIZE No. Ft. Date COAL WAS ENCOUNTERED AT FEET INCHES FEET INCHES FEET INCHES FEET INCHES

Main stratigraphic log table with columns: Formation, Color, Hard or Soft, Top, Bottom, Oil, Gas or Water, Depth Found, Remarks. Includes formations like Slate, Coal, Little Dunkard, Shells & Slate, etc., and a note 'Small amount of water at 800''.

