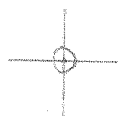


LATITUDE 39° 05' 00"

LONGITUDE 80° 20' 00"



7.5 OGIS topo location

7.5' loc 2.395 15' loc \_\_\_\_\_  
                  0.39W (calc.) \_\_\_\_\_

Company \_\_\_\_\_

Farm \_\_\_\_\_

Quad BERLIN 7/2

County LEWIS

District HACKERS CREEK

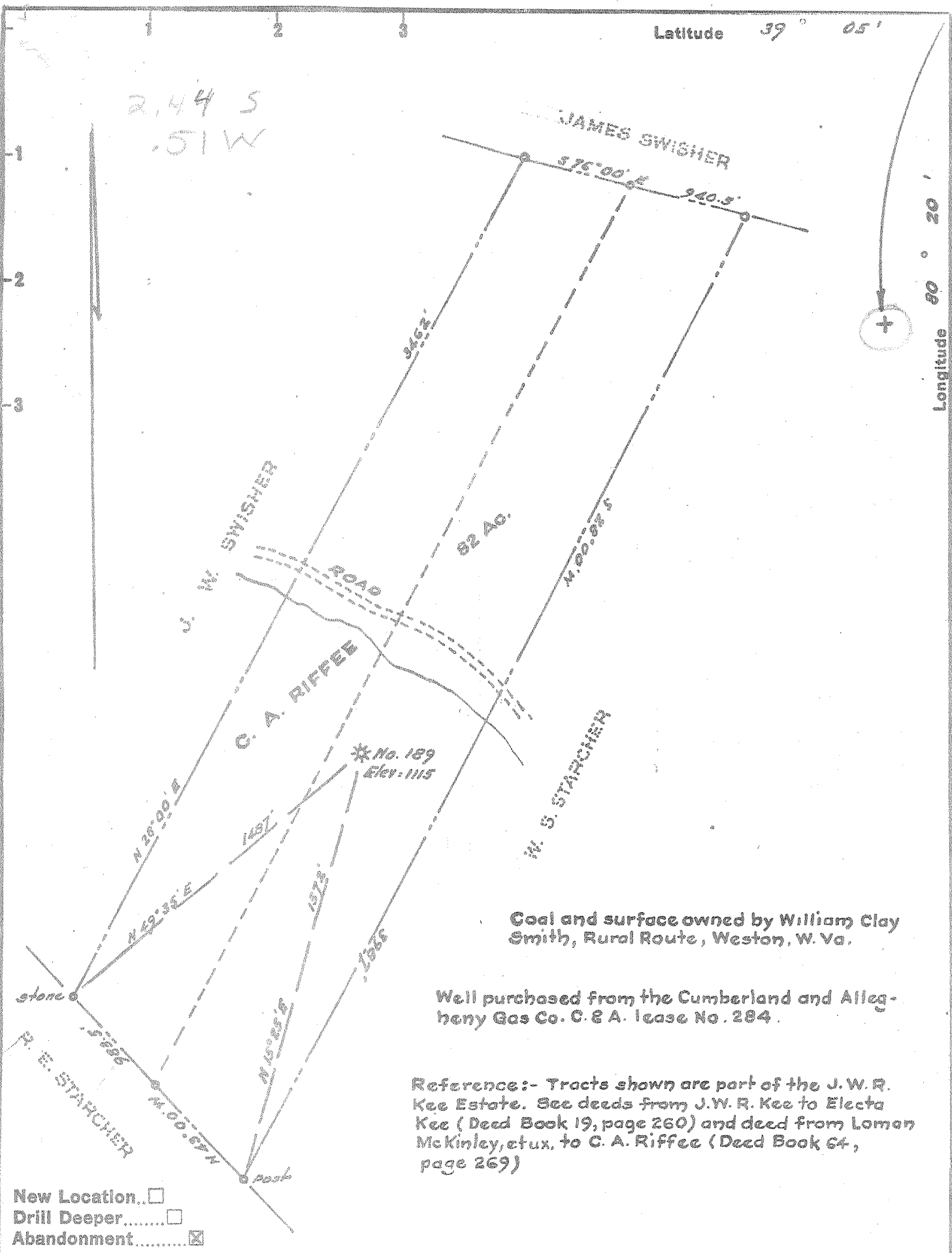
WELL LOCATION MAP

File No. 041-657A

Latitude 39° 05'

Longitude 80° 20'

2.44 S  
.51 W



Coal and surface owned by William Clay Smith, Rural Route, Weston, W. Va.

Well purchased from the Cumberland and Allegheny Gas Co. C. & A. lease No. 294.

Reference:- Tracts shown are part of the J. W. R. Kee Estate. See deeds from J. W. R. Kee to Electa Kee (Deed Book 19, page 260) and deed from Loman McKinley, et ux, to C. A. Riffée (Deed Book 64, page 269)

- New Location..
- Drill Deeper.....
- Abandonment.....

Company WEINER BROTHERS

Address 1307 Clark Bldg., Pittsburgh, Pa.

Farm C. A. Riffée

Tract \_\_\_\_\_ Acres 82 Lease No. \_\_\_\_\_

Well (Farm) No. 189 Serial No. \_\_\_\_\_

Elevation (Spirit Level) 1115

Quadrangle Weston

County Lewis District Hackers Cr.

Engineer [Signature]

Engineer's Registration No. 1227

File No. \_\_\_\_\_ Drawing No. \_\_\_\_\_

Date October, 1935 Scale. 1" = 500'

STATE OF WEST VIRGINIA  
DEPARTMENT OF MINES  
OIL AND GAS DIVISION  
CHARLESTON

### WELL LOCATION MAP

FILE NO. LEW-651-A

+ Denotes location of well on United States Topographic Maps, scale 1 to 62,500, latitude and longitude lines being represented by border lines as shown.

- Denotes one inch spaces on border line of original tracing.



754

STATE OF WEST VIRGINIA  
DEPARTMENT OF MINES Formerly: Eastern Oil Company  
OIL AND GAS DIVISION

Quadrangle Weston

WELL RECORD

Permit No. 681-4 Oil or Gas Well \_\_\_\_\_ (KIND)

Company Weiner Brothers (Max Weiner)  
Address Pittsburgh, Pa.  
C. A. Riffe & Swisher  
Farm \_\_\_\_\_ Acres 87  
Location (waters) 109 (2)  
Well No. hackers Crk. Elev. 1115  
District \_\_\_\_\_ County \_\_\_\_\_  
The surface of tract is owned in fee by \_\_\_\_\_  
Address \_\_\_\_\_

Casing and Tubing	Used in Drilling	Left in Well	Packers
Size			Kind of Packer
16			
13	116'	20'	6-5/8 x 2
10	767'	Pulled	Size of
8 1/4	1525'	1525'	2020'
6%			Depth set
5 3/16			
3		2181'	Perf. top
2			Perf. bottom
Liners Used			Perf. top
			Perf. bottom

Mineral rights are owned by \_\_\_\_\_  
Address July 17, 1918  
Drilling commenced September 11, 1918  
Drilling completed 2314' 2324'  
Date Shot From \_\_\_\_\_ To \_\_\_\_\_  
With \_\_\_\_\_  
Open Flow /10ths Water in \_\_\_\_\_ Inch  
/10ths Merc. in \_\_\_\_\_ Inch  
Volume \_\_\_\_\_ Cu. Ft.  
Rock Pressure \_\_\_\_\_ lbs. \_\_\_\_\_ hrs.  
Oil \_\_\_\_\_ bbls., 1st 24 hrs.  
Fresh water \_\_\_\_\_ feet \_\_\_\_\_ feet  
Salt water \_\_\_\_\_ feet \_\_\_\_\_ feet

CASING CEMENTED \_\_\_\_\_ SIZE \_\_\_\_\_ No. Ft. \_\_\_\_\_ Date \_\_\_\_\_  
COAL WAS ENCOUNTERED AT \_\_\_\_\_ FEET \_\_\_\_\_ INCHES  
\_\_\_\_\_ FEET \_\_\_\_\_ INCHES FEET \_\_\_\_\_ INCHES  
\_\_\_\_\_ FEET \_\_\_\_\_ INCHES FEET \_\_\_\_\_ INCHES

Formation	Color	Hard or Soft	Top	Bottom	Oil, Gas or Water	Depth Found	Remarks
Slate & Shells			0	325	Water at 45'		
Little Dunkard			325	375			
Slate & Shells			375	410			
Big Dunkard			410	470			
Slate & Shells			470	500			
Gas Sand			500	690	Water at 612'		
Slate & Shells			690	710			
1st Salt Sand			710	786	Water at 725'		
Slate & Shells			786	840			
2nd Salt Sand			840	1210	Water at 1155' - 4 bailers pr. hr.		
Red Rock			1210	1405			
Little Lime			1405	1425			
Pencil Cave			1425	1435			
Big Lime			1435	1510			
Big Injun			1510	1642	small amount of gas 1590'		
Slate			1642	1648			
Squaw			1648	1725			
Slate & Shells			1725	1890			
Gantz			1890	1930			
Slate & Shells			1930	1935			
Fifty Foot			1935	2001			
Thirty Foot			2005	2030			
Slate & Shells			2030	2311			
Fifth Sand			2311	2330	Gas 2313' to 2325'		
Total Depth				2383	Well shot with 20 qt shell 3 1/2 x 10 top of shot 2314' - bottom 2324' Test before shot 8/10 W - 2" 119 Mcf Test after shot 25/10 W - 2" 211 Mcf		

