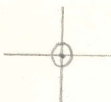


LATITUDE 38° 57' 30"

LONGITUDE 80° 32' 30"



7'5 OGIS topo location

7.5' loc 280S 15' loc \_\_\_\_\_  
                  134W (calc.) \_\_\_\_\_

Company \_\_\_\_\_

Farm \_\_\_\_\_

Quad PETERSON 7 1/2'

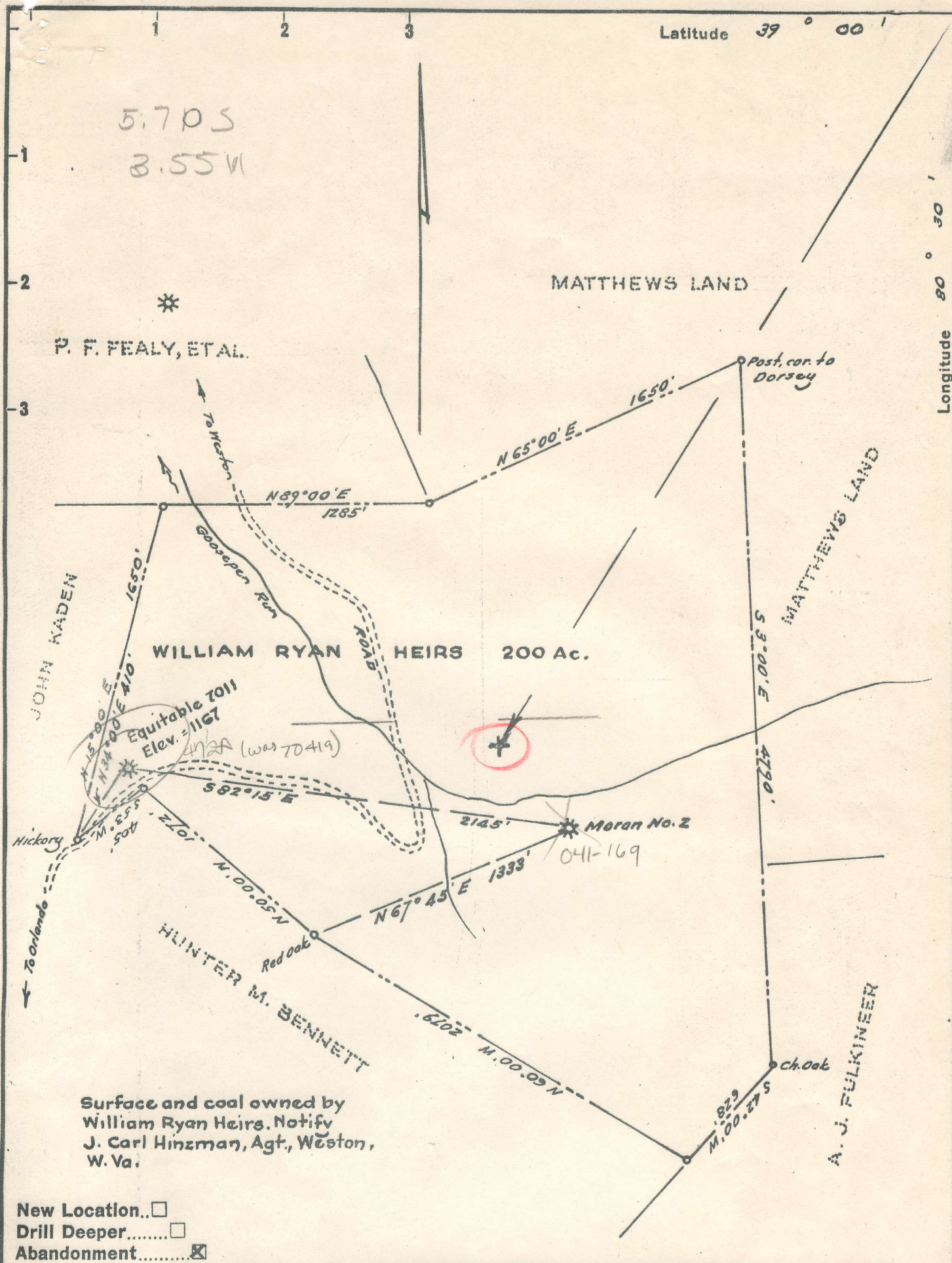
County LEWIS

District COURT HOUSE

WELL LOCATION MAP

File No. 041-472A

Now 654A



Company C. F. MORAN

Address Weston, W. Va.

Farm Wm. Ryan Heirs

Tract \_\_\_\_\_ Acres 200 Lease No. \_\_\_\_\_

Well (Farm) No. One Serial No. 2

Elevation (Spirit Level) 1167

Quadrangle Burnsville

County Lewis District Court House

Engineer W. H. [Signature]

Engineer's Registration No. 1227

File No. \_\_\_\_\_ Drawing No. \_\_\_\_\_

Date Sept, 1955 Scale 1" = 600'

STATE OF WEST VIRGINIA  
 DEPARTMENT OF MINES  
 OIL AND GAS DIVISION  
 CHARLESTON

**WELL LOCATION MAP**  
 FILE NO. LEW-654-A

+ Denotes location of well on United States Topographic Maps, scale 1 to 62,500, latitude and longitude lines being represented by border lines as shown.

- Denotes one inch spaces on border line of original tracing.



STATE OF WEST VIRGINIA  
DEPARTMENT OF MINES  
OIL AND GAS DIVISION

72/6

*Bumville Ind*

Permit No. *654A(2)* *was* 492A

WELL RECORD

Oil or Gas Well Gas  
(KIND)

Company Noran and Company  
Address Box 368--Weston, W. Va.  
Farm William Ryan Heirs Acres 208  
Location (waters) Goose Pen Run  
Well No. 1 Elev. 1167  
District Court House County Lewis  
The surface of tract is owned in fee by William Ryan Heirs  
J. Carl Hinzman Address Weston, W. Va.  
Mineral rights are owned by Same  
Address \_\_\_\_\_  
Drilling commenced 6-23-14  
Drilling completed 8-20-14  
Date Shot not available From \_\_\_\_\_ To \_\_\_\_\_  
With \_\_\_\_\_  
Open Flow 17/10ths Water in 1 Inch  
/10ths Merc. in \_\_\_\_\_ Inch  
Volume 32,000 Cu. Ft.  
Rock Pressure 660 lbs. 48 hrs.  
Oil \_\_\_\_\_ bbls., 1st 24 hrs.  
Fresh water Unknown feet \_\_\_\_\_ feet  
Salt water " feet \_\_\_\_\_ feet

Casing and Tubing	Used in Drilling	Left in Well	Packers
Size			Kind of Packer
16			
13			
10	90	Unknown	Size of
8 1/4	856	"	
6 5/8	1832	1832	Depth set
5 3/16			
3			Perf. top
2	1871	None	Perf. bottom
Liners Used			Perf. top
			Perf. bottom

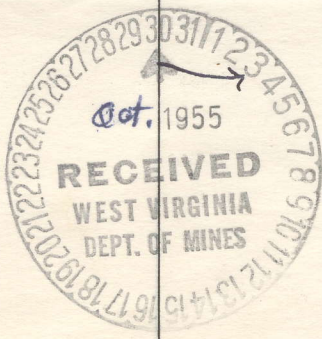
CASING CEMENTED \_\_\_\_\_ SIZE \_\_\_\_\_ No. Ft. \_\_\_\_\_ Date \_\_\_\_\_

COAL WAS ENCOUNTERED AT 536 FEET to INCHES  
541 FEET \_\_\_\_\_ INCHES FEET \_\_\_\_\_ INCHES  
\_\_\_\_\_ FEET \_\_\_\_\_ INCHES FEET \_\_\_\_\_ INCHES

Formation	Color	Hard or Soft	Top	Bottom	Oil, Gas or Water	Depth Found	Remarks
Coal			536	541			
Salt Sand			1560	1618	Gas	1575	
MaXon			1650	1677	"	1672	
Big Lime			1765	1850			
Big Injun			1850	1980	"	1930	
Gantz			2160	2175			
50 feet			2285	2305			
Gordon Stray			2357	2370			
Gordon			2385	2425			
4th Sand			2430	2445			
5th Sand			2610	2620			
Total depth			2680	2714			

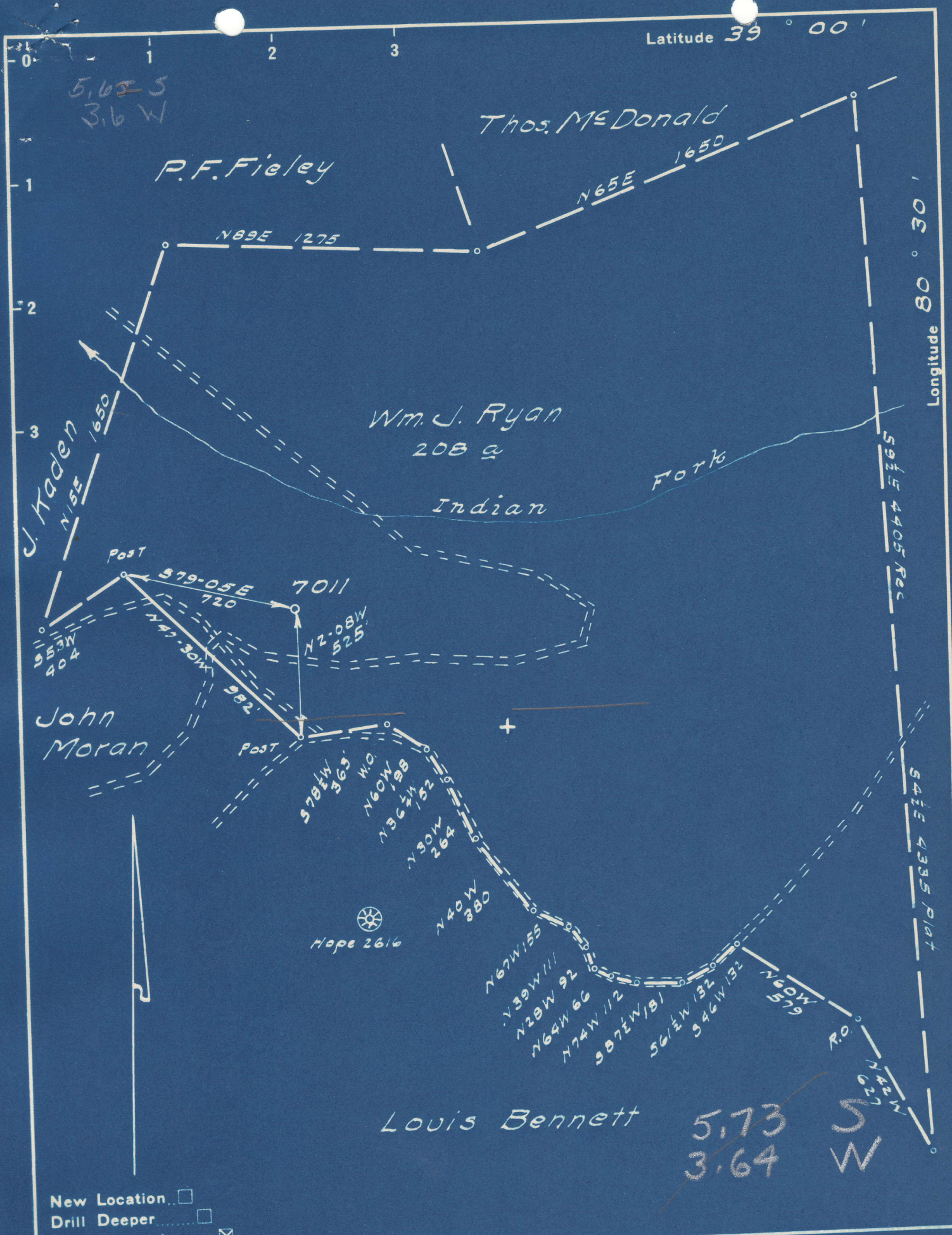
Complete Log not available.

Company as noted on enclosed plat is C. F. Moran, should have been Moran and Company.



JAN. 23 1956





New Location   
 Drill Deeper   
 Abandonment

Company Pittsburgh & W. Va. Gas Co.  
 Address Clarksburg W. Va.  
 Farm Wm. J. Ryan  
 Tract \_\_\_\_\_ Acres 208 Lease No. 4475  
 Well (Farm) No. 1 Serial No. 7011  
 Elevation (Spirit Level) 1149 VA.  
 Quadrangle Burnsville NE. 3<sup>2</sup>  
 County Lewis District Court House  
 Engineer James E. Jeffries  
 Engineer's Registration No. 1084  
 File No. 159/93 Drawing No. \_\_\_\_\_  
 Date 3-11-49 Scale 1"=500'

STATE OF WEST VIRGINIA  
 DEPARTMENT OF MINES  
 OIL AND GAS DIVISION  
 CHARLESTON

**WELL LOCATION MAP**  
 FILE NO. LEW-472-A  
 Now 654R

+ Denotes location of well on United States Topographic Maps, scale 1 to 62,500, latitude and longitude lines being represented by border lines as shown.  
 - Denotes one inch spaces on border line of original tracing.



558

STATE OF WEST VIRGINIA  
DEPARTMENT OF MINES  
OIL AND GAS DIVISION

WELL RECORD

Oil or Gas Well "GAS"  
(KIND)

Permit No. Ab 47-A

Company Pittsburgh & West Va Gas Company.  
Address Clarksburg, West Va.

Farm William J. Ryan Acres 208

Location (waters) Burnsville N/E. 3-2

Well No. 7011 Elev. 1149' VA

District Court House County Lewis

The surface of tract is owned in fee by W. J. Ryan

Mineral rights are owned by J. D. Shea-Atty-in-fact  
for W. J. Ryan Address Weston, West Va.

Drilling commenced June 2nd, 1914

Drilling completed August 20th, 1914

Date Shot \_\_\_\_\_ From \_\_\_\_\_ To \_\_\_\_\_

With \_\_\_\_\_

Open Flow \_\_\_\_\_ /10ths Water in \_\_\_\_\_ Inch  
\_\_\_\_\_ /10ths Merc. in \_\_\_\_\_ Inch

Volume \_\_\_\_\_ Cu. Ft.

Rock Pressure \_\_\_\_\_ lbs. \_\_\_\_\_ hrs.

Oil \_\_\_\_\_ bbls., 1st 24 hrs.

Fresh water \_\_\_\_\_ feet \_\_\_\_\_ feet

Salt water \_\_\_\_\_ feet \_\_\_\_\_ feet

Casing and Tubing	Used in Drilling	Left in Well	Packers
Size			Kind of Packer
16			
13			
10	90'	90'	Size of
8 1/4	856'	856'	
6 5/8	1834'	1834'	Depth set
5 3/16	2358'	None.	
3			Perf. top
2			Perf. bottom
Liners Used			Perf. top
			Perf. bottom

CASING CEMENTED \_\_\_\_\_ SIZE \_\_\_\_\_ No. Ft. \_\_\_\_\_ Date \_\_\_\_\_

COAL WAS ENCOUNTERED AT 536 FEET 60 INCHES

\_\_\_\_\_ FEET \_\_\_\_\_ INCHES FEET \_\_\_\_\_ INCHES

\_\_\_\_\_ FEET \_\_\_\_\_ INCHES FEET \_\_\_\_\_ INCHES

Formation	Color	Hard or Soft	Top	Bottom	Oil, Gas or Water	Depth Found	Remarks
Slate	White	Soft	0	32			
Line	Dark	Hard	32	57			
Slate	White	Soft	57	67			
Line	Dark	Hard	67	77			
Red Rock	Red	Soft	77	287			
Line	White	Hard	287	318			
Sand	"	Soft	318	330			
Slate	Black	Hard	330	350	Water	335'	
Red Rock	Red	Soft	350	410			
Slate	White	"	410	440			
Sand	"	"	440	450			
Red Rock	Red	"	450	465			
Line	Dark	Hard	465	475			
Red Rock	Red	Soft	475	520			
Slate	White	Hard	520	536			
Coal	Black	"	536	541			
Slate	White	Soft	541	550			
Sand	"	Hard	550	595			
Slate	Dark	Soft	595	605			
Line	White	Hard	605	640			
Little Dunkard	"	"	640	750			
Line	Dark	"	750	790			
Sand	White	Hard	790	885			
Slate	"	Soft	885	895			
Big Dunkard	"	Hard	895	970			
Slate	Dark	Soft	970	980			
Slate&Shells	"	"	980	1012			
Gas Sand	White	Soft	1012	1059			
Sand	Dark	Hard	1059	1085			
Slate	"	"	1085	1105			
Salt Sand	"	"	1105	1205			
Slate	Brown	Hard	1205	1250	Gas	1236'	
Shells	Black	Soft	1250	1275			
Sand	"	"	1275	1330			
"	White	Hard	1330	1371			
Slate	Black	Soft	1371	1391			
Line	Dark	Hard	1391	1443			
Slate	Black	Soft	1443	1475			



Formation	Color	Hard or Soft	Top	Bottom	Oil, Gas or Water	Depth Found	Remarks
Line	Dark	Hard	1475	1495			
Slate&Shells	"		1495	1560			
3rd.Salt Sand	White	Hard	1560	1618	Gas	1575'	
Red Rock	Red	Soft	1618	1650			
Maxon Sand	White	Hard	1650	1677	Gas	1672'	
Slate	Dark	Soft	1677	1687			
Little Lime	"	Hard	1687	1745			
Pencil Cave			1745	1765			
Big Lime	Dark	Hard	1765	1850			
Big Injun		"	1850	1980	Gas	1930'	
Slate&Lime Shells			1980	2085			
Sand	Dark	Hard	2085	2095			
Slate&Lime Shells			2095	2120			
Sand	White	Hard	2120	2135			
Slate&Lime Shells			2135	2160			
Gants Sand	White	Hard	2160	2175			
Slate&Shells	"		2175	2285			
50 Ft.Sand	"	Hard	2285	2305			
Un-recorded			2305	2340			
Stray Sand		Hard	2340	2357			
Sand	Dark	"	2357	2370			
Sand	Red	"	2370	2375			
"	Gray	Hard	2375	2380			
Slate	Dark	Soft	2380	2385			
Gordon Sand	White	Hard	2385	2425			
Slate	Dark	Soft	2425	2430			
4th.Sand	"	Hard	2430	2445			
Lime	Dark	"	2445	2510			
Red Rock	Red	Soft	2510	2525			
Slate&Shells	Dark		2525	2620			
Sand	Gray	Hard	2620	2630			
Slate&Shells	Dark	Soft	2630	2651			
" "	"		2651	2680			
Total depth.....				2680			

February 9, 1949

Date \_\_\_\_\_, 19\_\_\_\_

PITTSBURGH & WEST VA GAS COMPANY.

APPROVED \_\_\_\_\_, Owner

By W. M. Martin  
(Title)

Now O 41-30654

041-30472

F. 219

# The Philadelphia Company of West Virginia

Record of Well No. 7011

Located on W.J. Ryan

Farm Apr. 1st. 14.

19

Court House

District

Lewis

County West, Virginia.

State

Division

E"

District No.

13

Drilled under Well Order

Rig built by

John Craig

Began

May, 25th

19 14

Completed June. 1st. 14.

19 14

Well drilled by

C.W. McCall

Began

June, 23rd

19 14

Completed Aug, 20th. 14

19 14

Depth of Well

2680

feet. Slate

Size of Hole

5-3/16"

Producing

Gas

Elev: 11496

### CASED WITH

### REMARKS

AMOUNT	SIZE	KIND
16'	Wood	15"
90'	Casing	10"
856'	8 1/2"	Casing.
1832'	6 5/8"	"
<del>2350'</del>	<del>5-3/16"</del>	<del>"</del>

Sold Well to C.F. Moran  
C.O. 2947

6-5/8" x 8 1/2" bot hole packer  
reclaimed. August, 24th. 1914.

### COAL VEINS 536 to 541

### FORMATIONS

NAME	TOP	BOTTOM	OIL	GAS	WATER	REMARKS
Salt Sand		1570			1568	
Maxom Sand	1650	1680			1672	
Big Lime	1765	1850				
Big Injun	1850	1980		1950		open flow test 17/10th water thro' 1" opening
Gantz sand	2160	2175				
50 ty foot sand	2285	2305				
Gordon Stray	2357	2370				
Gordon Sand	2385	2425				
4th Sand	2430	2445				
5th sand	2510	2620				questionable

43 Mcf



FIRST PRESSURE TEST IN 6-5/8" CASING

REMARKS test made after pulling 5-5/16"

Time	Pressure (lbs.)	Time	Pressure (lbs.)
30 Sec.	0	after shot	0
1 Min.	0	1 min	2
2 "	0	2 "	4
5 "	3/0	3 "	8
10 "	4/0	4 "	13
15 "	5/0	5 "	17
20 "	10/10	10 "	26
30 "	20/20	20 "	70
Rock Pressure	rock 270#		

1- 30 quart shot in Big Injun  
 Bridged at 1963  
 Anchor 26 1/2'  
 Shell 5" x 7 1/2"

Taken Aug, 20th 19 14  
 By F.W. Lemley

WELL TUBED AND PACKED Sept. 4th 1914

1871 feet 2" tubing above packer  
 20 " 3" " " (1 joint)  
 67 " 3" " below " (3 joints & 1 piece)

FIRST PRESSURE TEST IN Sept. 4th 2" TUBING

REMARKS

Time	Pressure (lbs.)
30 Sec.	0
1 Min.	5
2 "	2/10
5 "	3/20
10 "	4/25
15 "	5/30
20 "	10/40
30 "	20/70

Rock Pressure 660# in 48 hours

Taken Set, 4th 19 14  
 By F.W. Lemley

MATERIAL FOR THIS WELL RECEIVED FROM FOLLOWING SOURCES:

- (1) Complete Rig Pattern C.A. Butcher, Clksbg @ \$19.50 F.O.B. Orlando. \$216.00
- (1) Complete set Rig Timbers of W.J. Ryan 75.00
- (1) " " Pksbg Rig Irons 4 1/2"

# 7011 W.J. Ryan

## FORMATIONS

NAME	TOP	BOTTOM	OIL	GAS	WATER	REMARKS
Slate	00	32				
Lime	32	57				
Slate	57	67				
Lime	67	77				
Red Rock	77	287				
Lime	287	318				
Sand	318	330				
Slate	330	350			335	
Red Rock	350	410				
Slate	410	440				
Sand	440	450				
Red Rock	450	465				
Lime	465	475				
Red Rock	475	520				
Slate	520	536				
Coal	536	541				
Slate	541	550				
Sand	550	595				
Slate	595	605				
Lime	605	640				
Sand lit ankrd	640	750				
Lime	750	790				
Sand	790	885				
Slate	885	895				
Sand	895	970				
Slate	970	980				
Slate & Shells	980	1012				
Gas Sand	1012	1059				
Sand	1059	1085				
Slate	1085	1105				
Salt Sand	1105	1205		1236		
Slate	1205	1250				
Shells	1250	1275				
Sand	1275	1330				
Sand	1330	1371				
Slate	1371	1391				
Lime	1391	1443				
Slate	1443	1475				
Lime	1475	1495				
Slate & Shells	1495	1560				
Salt Sand	1560	1518		1575		
Red Rock	1518	1650				
Maxon Sand	1650	1677				
Slate	1677	1687				
Lit Lime	1687	1745				
Pencil Cave	1745	1765				
Big Lime	1765	1850				
Big Injun	1850	1980		1930		
Slate & Shells	1980	2085				
Sand	2085	2095				
Slate & Shells	2095	2120				
Sand	2120	2135				
Sale & Lime	2135	2160				
Gantz Sand	2160	2175				
Slate & Shells	2175	2285				
50ty foot	2285	2305				
Brake	2305	2340				
Slate	2340	2357				
Gordon Stray	2357	2370				
Sand	2370	2375				
Sand	2375	2380				
Slate	2380	2385				
Gordon Sand	2385	2425				
Slate	2425	2430				
4th Sand	2430	2445				

#7011 W.J.Ryan

## FORMATIONS

NAME	TOP	BOTTOM	OIL	GAS	WATER	REMARKS
Lime	2445	2510				
Red Rock	2510	2525				
Slate& Shells	2525	2620				
5th Sand	2620	2630				
Slate&Shells	2630	2651				
Slate&Shells	2651	2680				
Total Depth	2680					