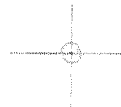


LATITUDE 39° 05' 00"



LONGITUDE 80° 32' 30"

7.5 OGIS topo location

7.5' loc 0.705 15' loc _____
0.60W (calc.) _____

Company _____

Farm _____

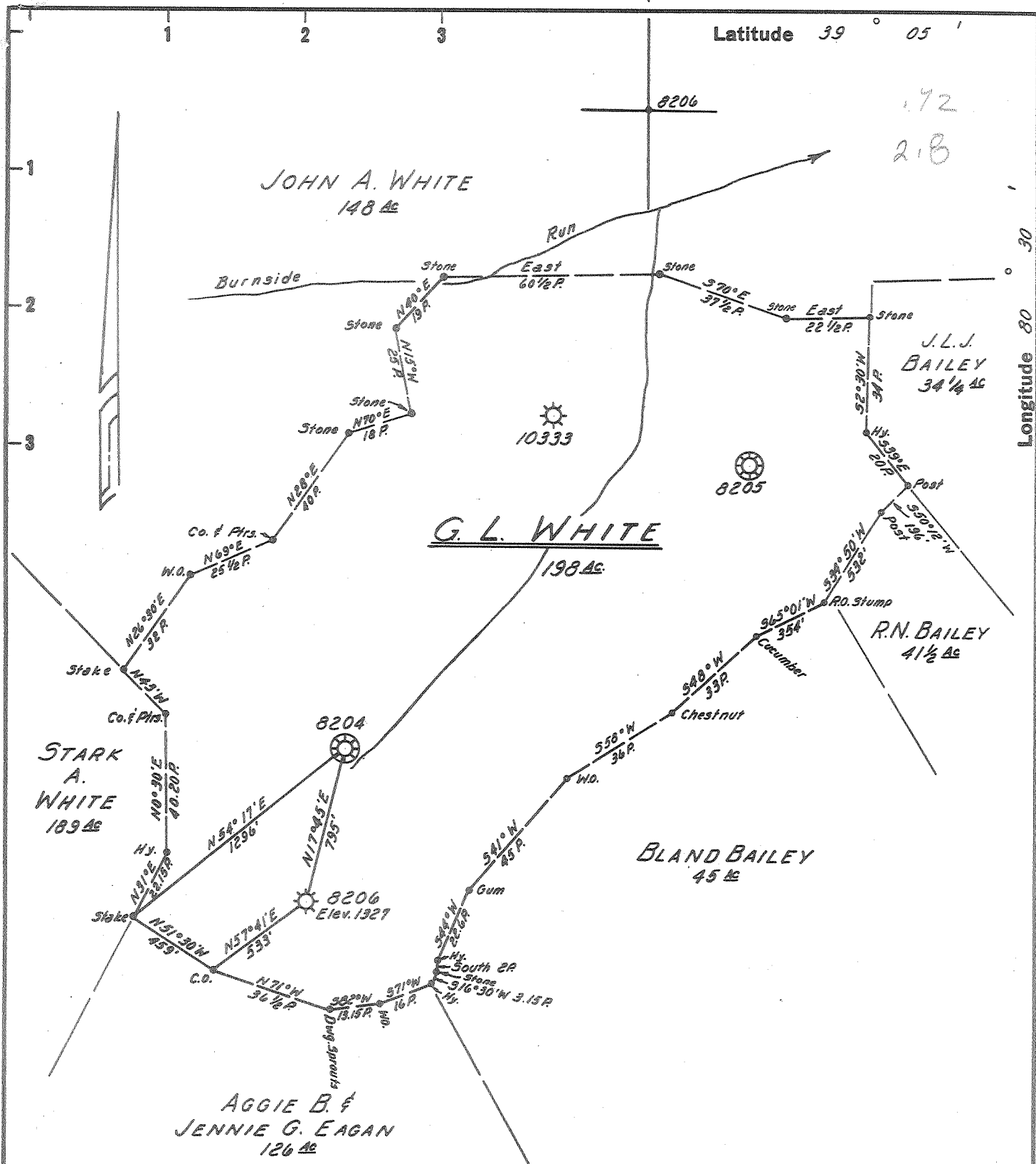
Quad CAMDEN 7 1/2'

County Lewis

District FREEMANS CREEK

WELL LOCATION MAP

File No. 041.761A



NOTE:
Well #8206 was surveyed
July 8, 1949

New Location
 Drill Deeper
 Abandonment Partial 8206

MAP SHEET 69, S-26 E-3; F.B. 935, P. 22, 23, & 24

Company	HOPE NATURAL GAS CO.
Address	CLARKSBURG, W.VA.
Farm	G. L. WHITE
Tract	Acres 198 Lease No. 53103
Well (Farm) No.	Serial No. 8206
Elevation (Spirit Level)	1327'
Quadrangle	VADIS S.E.
County	LEWIS District FREEMANS CRK.
Engineer	Jackson M. Jarvis
Engineer's Registration No.	2397
File No.	Drawing No.
Date	10/8/63 Scale 1" = 40 POLES

STATE OF WEST VIRGINIA
 DEPARTMENT OF MINES
 OIL AND GAS DIVISION
 CHARLESTON

WELL LOCATION MAP
 FILE NO. LEW-761-A

+ Denotes location of well on United States Topographic Maps, scale 1 to 62,500, latitude and longitude lines being represented by border lines as shown.

- Denotes one inch spaces on border line of original tracing.