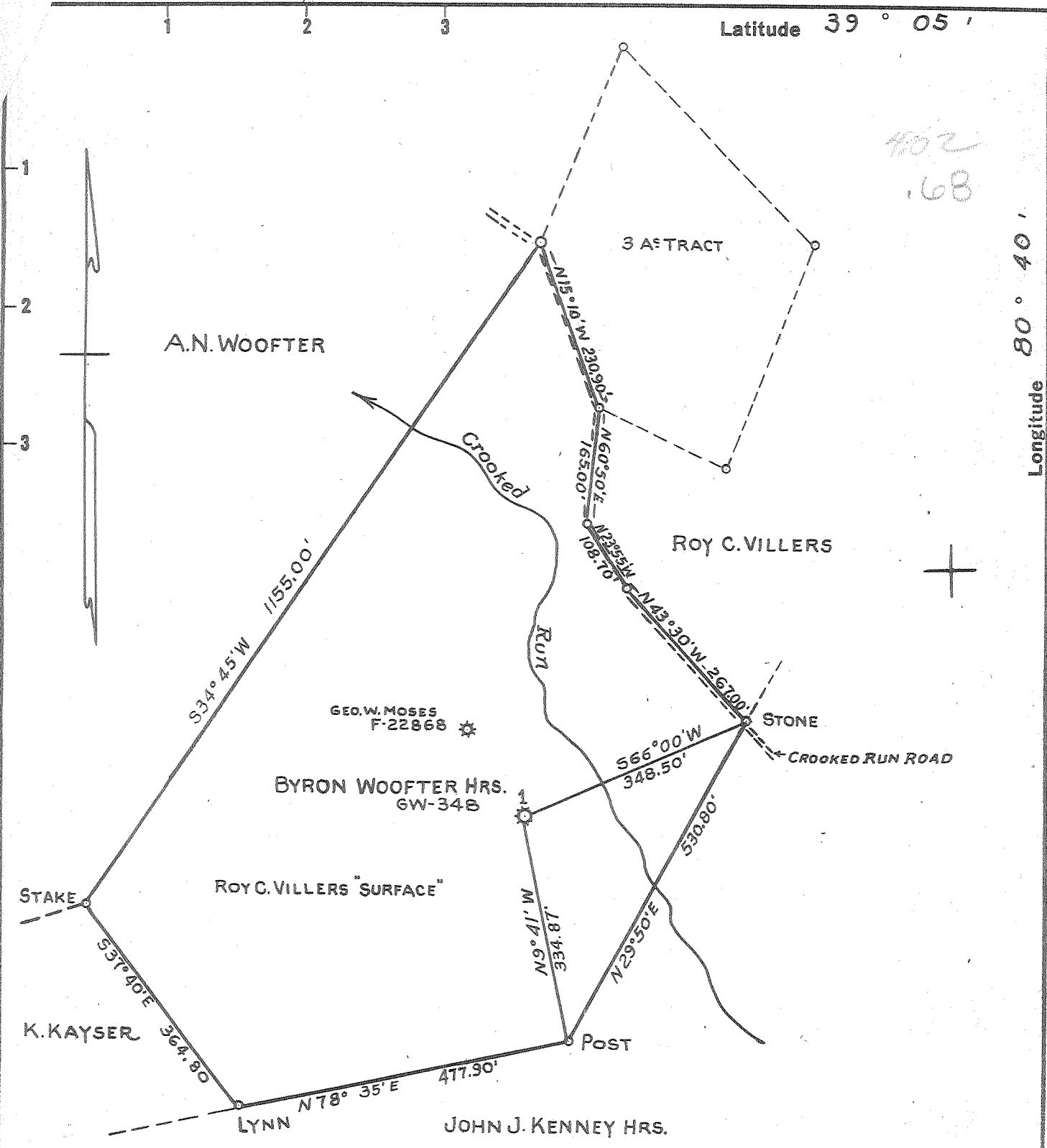


Latitude 39° 05'

Longitude 80° 40'



NOTE- ELEVATION TAKEN FROM U.S.C. & G. BENCH MARK, N.E. CORNER EAST ABUTMENT OF BRIDGE OVER ALUM FORK OF LEADING CREEK STANDARD TABLET STAMPED "807.1"

THE ACCURACY OF THIS MAP IS GUARANTEED WITHIN THE LIMITS PRESCRIBED BY THE OIL AND GAS DIVISION OF THE DEPARTMENT OF MINES.

I, THE UNDERSIGNED, HEREBY CERTIFY THAT THIS MAP IS CORRECT TO THE BEST OF MY KNOWLEDGE AND BELIEF AND SHOWS ALL THE INFORMATION REQUIRED BY PARAGRAPH 6 OF THE REGULATIONS AND REGULATIONS OF THE OIL AND GAS DIVISION OF THE MINING LAWS OF WEST VIRGINIA.

New Location
 Drill Deeper
 Abandonment

Company CITIES SERVICE OIL COMPANY
 Address P.O. BOX 873 CHARLESTON W.VA.
 Farm BYRON WOOFTER "HEIRS"
 Tract _____ Acres 16.5 Lease No. CFW.V. 323
 Well (Farm) No. 1 Serial No. GW-348
 Elevation (Spirit Level) 805.00'
 Quadrangle VADIS 9 S-407 W-070
 County LEWIS District FREEMANS CREEK
 Engineer Wendell S. Moses
 Engineer's Registration No. 2113
 File No. _____ Drawing No. _____
 Date MAY 6-1964 Scale 1" = 200'

STATE OF WEST VIRGINIA
 DEPARTMENT OF MINES
 OIL AND GAS DIVISION
 CHARLESTON

WELL LOCATION MAP
 FILE NO. LEW-766-A

+ Denotes location of well on United States Topographic Maps, scale 1 to 62500 latitude and longitude lines being represented by border lines as shown.
 - Denotes one inch spaces on border line of original tracing.