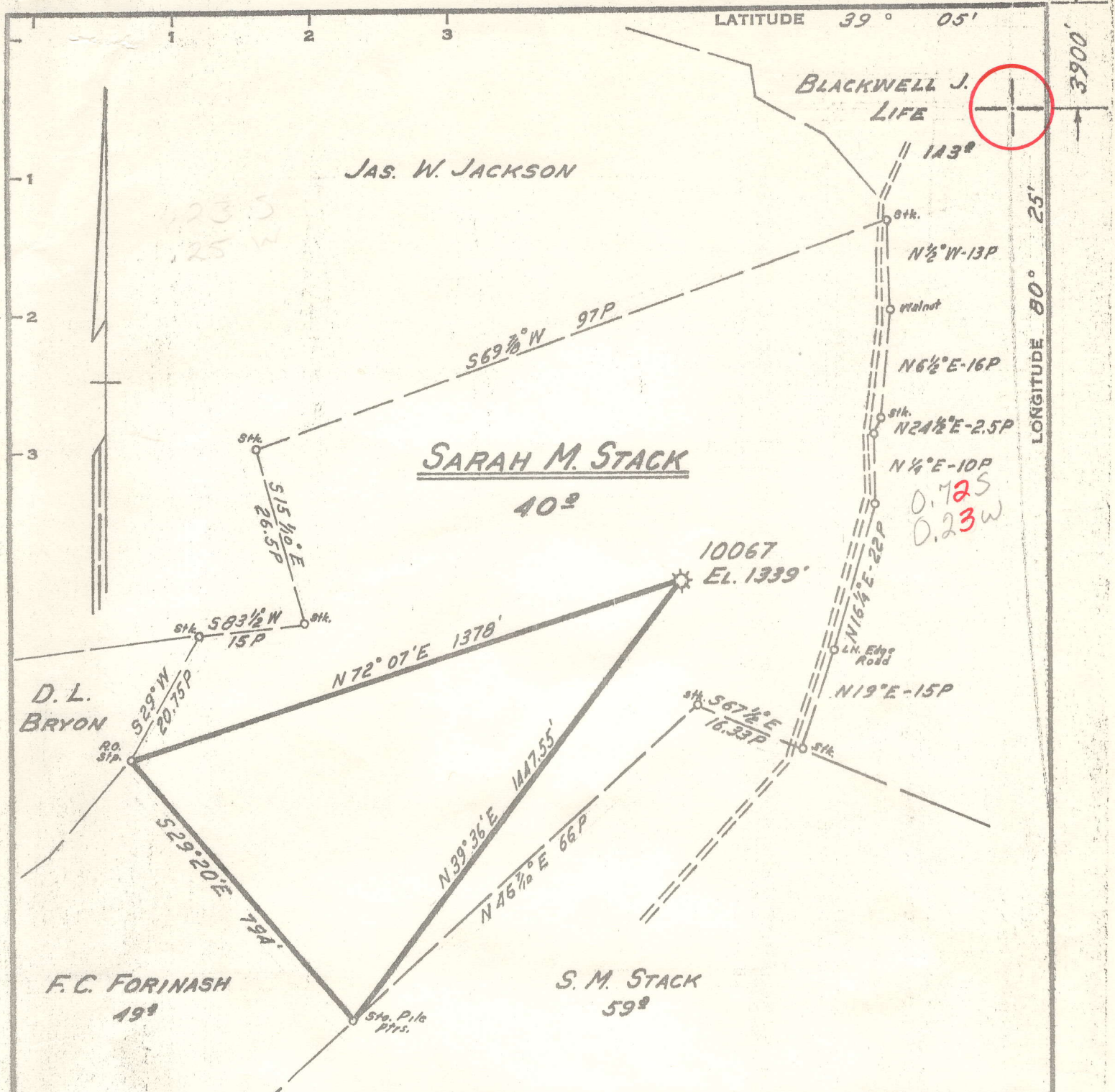


1500'

3900'

LATITUDE 39° 05'

LONGITUDE 80° 25'



Minimum Error of Closure 1' IN 200'
 Source of Elevation FROM C.G.S. CORR WELL 10066 ON
F.C. FORINASH FARM.

"I, the undersigned, hereby certify that this map is correct to the best of my knowledge and belief and shows all the information required by paragraph 6 of the rules and regulations of the oil and gas section of the mining laws of West Virginia."

- New Location
- Drill Deeper
- Abandonment *used*

2-RT-71

MAP SH. 57 S27 E10 - FB. 1182 P. 36-37

Company CONSOLIDATED GAS SUPPLY CORP
 Address CLARKSBURG, W.VA.
 Farm SARAH M. STACK
 Tract Acres 40 Lease No. 67294
 Well (Farm) No. 10067 Serial No. 10067
 Elevation (Spirit Level) 1339'
 Quadrangle WESTON SW
 County LEWIS District HACKERS CRK.
 Engineer Jackson M. Jarvis
 Engineer's Registration No. 2397
 File No. _____ Drawing No. _____
 Date FEB. 25, 1971 Scale 1" = 20 FEET

STATE OF WEST VIRGINIA
 DEPARTMENT OF MINES
 OIL AND GAS DIVISION
 CHARLESTON

WELL LOCATION MAP
 FILE NO. Lew-798 (A)

+ Denotes location of well on United States Topographic Maps, scale 1 to 62,500, latitude and longitude lines being represented by border lines as shown.
 — Denotes one inch spaces on border line of original tracing.



RECEIVED
MAR 1 1971

041 798A

*Record of original
drilling*

STATE OF WEST VIRGINIA
DEPARTMENT OF MINES
OIL AND GAS WELLS DIVISION

- Rotary
- Spudger
- Cable Tools
- Storage

Quadrangle WESTON

Permit No. *Abandonment Number* **WELL RECORD**

Oil or Gas Well Gas
(KIND)

Company	Consolidated Gas Supply Corporation		Casing and Tubing	Used in Drilling	Left in Well	Packers
Address	Clarksburg, W. Va.		Size			
Farm	Sarah M. Stack	Acres 40	15			Kind of Packer
Location (waters)			13			
Well No.	10067	Elev. 1339'	10	140	None	Size of
District	Hackers Creek,	County Lewis	8 1/4	1057	1057 None	Depth set
The surface of tract is owned in fee by			6 3/8	1552	1552	
Address			5 3/16			
Mineral rights are owned by			4 1/2			
Address			3	2431	None	Perf. top
Drilling commenced	1-29-12		2			Perf. bottom
Drilling completed	3-4-12					Perf. top
Date Shot	3-6-12		Liners Used			Perf. bottom
With	Unknown					

Open Flow /10ths Water in Inch Attach copy of cementing record. **No cementing**
/10ths Merc. in Inch CASING CEMENTED SIZE No. Ft. Date

Volume Old well exhausted -Will abandon Cu. Ft. Amount of cement used (bags)

Rock Pressure Not taken lbs. hrs. Name of Service Co.

Oil None bbls., 1st 24 hrs. COAL WAS ENCOUNTERED AT 710 FEET 60 INCHES

WELL ACIDIZED (DETAILS) No 825 FEET 24 INCHES FEET INCHES

WELL FRACTURED (DETAILS) No FEET INCHES FEET INCHES

RESULT AFTER TREATMENT (Initial open Flow or bbls.)

ROCK PRESSURE AFTER TREATMENT HOURS

Fresh Water None recorded Feet Salt Water Feet

Producing Sand 4th, 5th & Gordon gas exhausted Depth - -

Formation	Color	Hard or Soft	Top	Bottom	Oil, Gas or Water	Depth	Remarks
Big Dunkard			460	560			
Gas Sand			620	625			
Coal			710	715			
Coal			825	827			
1st Salt			835	968			
Little Lime			1480	1490			
Big Lime			1530	1590			
Injun			1590	1735			
Gantz A			1915	1925			
50' Sand			1990	2042			
30' Sand			2060	2075	Gas	2065'	
Gordon Stray			2125	2135			
Gordon			2210-	2240	Gas	2235'	Show
4th Sand			2275	2300	Gas	2277'	
5th Sand			2382	2401	Gas	2390'	
Total Depth				2486'			

Consolidated Gas Supply Corporation
445 West Main Street
Clarksburg, W. Va.