

39°07'30"

Latitude

85°40'00"

Longitude

2.80s
2.12w

Topo Location

7.5' Loc. _____ 15' Loc. _____
(calc.) _____

Company _____

Farm _____

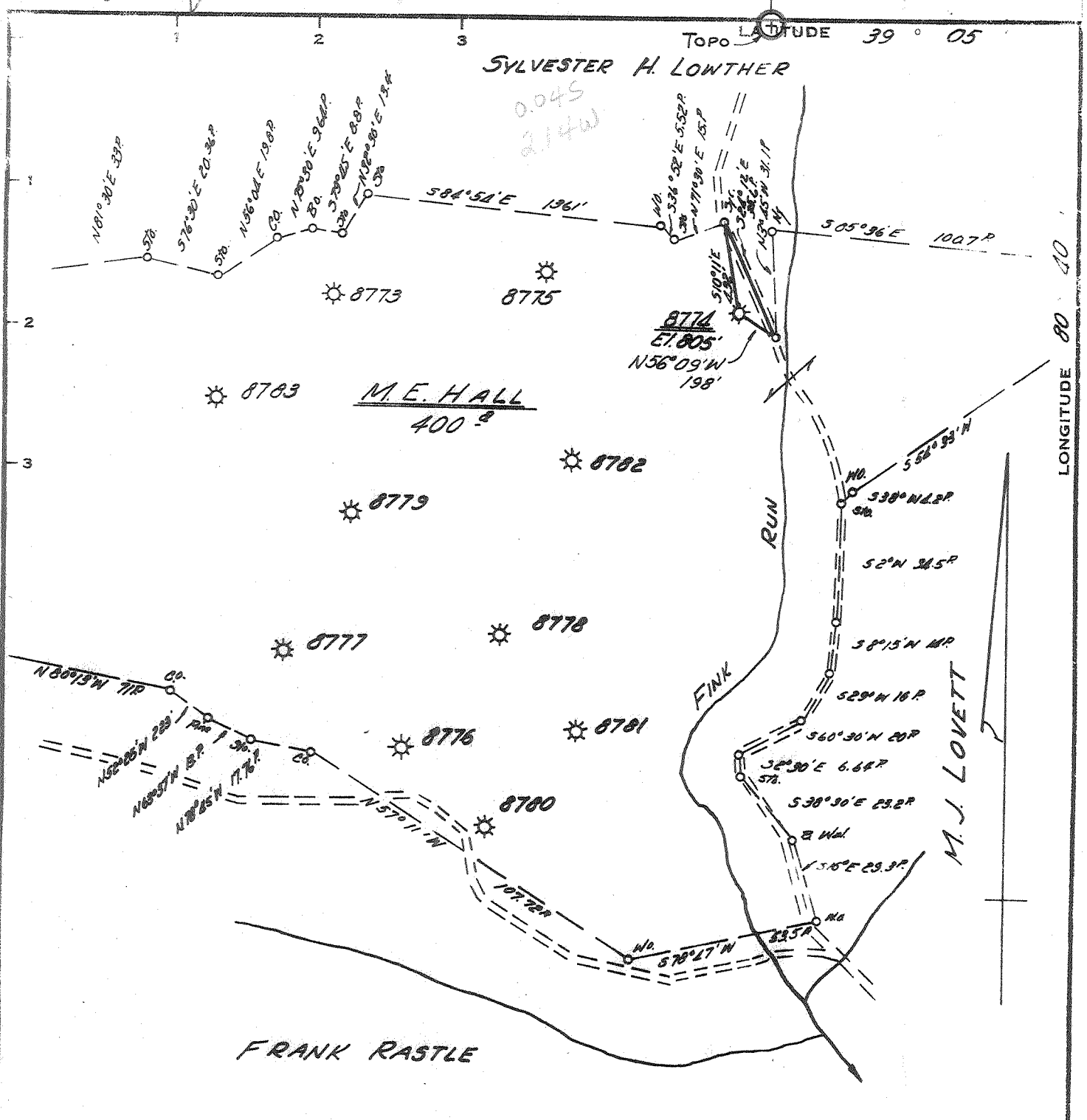
15' Quad _____
(sec.)

7.5' Quad Vadis

District Freemans Creek

WELL LOCATION PLAT

County 041 Permit 36815



Minimum Error of Closure 1' IN 200'
 Source of Elevation BENCH MARK AT HURST 815'

"I, the undersigned, hereby certify that this map is correct to the best of my knowledge and belief and shows all the information required by paragraph 6 of the rules and regulations of the oil and gas section of the mining laws of West Virginia."

New Location
 Drill Deeper
 Abandonment 6127175

MAP SHEET 72 52526 W67 F.B.166 P& 11-12

Company CONSOLIDATED GAS SUPPLY CORP
 Address CLARKSBURG W. VA.
 Farm M.E. HALL
 Tract Acres 400 Lease No. 51882
 Well (Farm) No. 8774 Serial No. 8774
 Elevation (Spirit Level) 805'
 Quadrangle VADIS SW
 County LEWIS District FREEMANS CR.
 Engineer Jackson M. Jarvis
 Engineer's Registration No. 2897
 File No. _____ Drawing No. _____
 Date JUNE 19, 1975 Scale 1" = 40 POLES

STATE OF WEST VIRGINIA
 DEPARTMENT OF MINES
 OIL AND GAS DIVISION
 CHARLESTON

WELL LOCATION MAP
FILE NO. LEW-815-A

+ Denotes location of well on United States Topographic Maps, scale 1 to 62,500, latitude and longitude lines being represented by border lines as shown.
 — Denotes one inch spaces on border line of original tracing.

47-041 JUL 9 1975