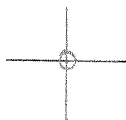


LATITUDE 38° 10' 00"

LONGITUDE 82° 00' 00"



7'5 OGIS topo location

7.5' 10C 2785 15' 10C _____
1.58W (calc.) _____

Company _____

Farm _____

Quad HAGER 7 1/2'

County LINCOLN

District JEFFERSON

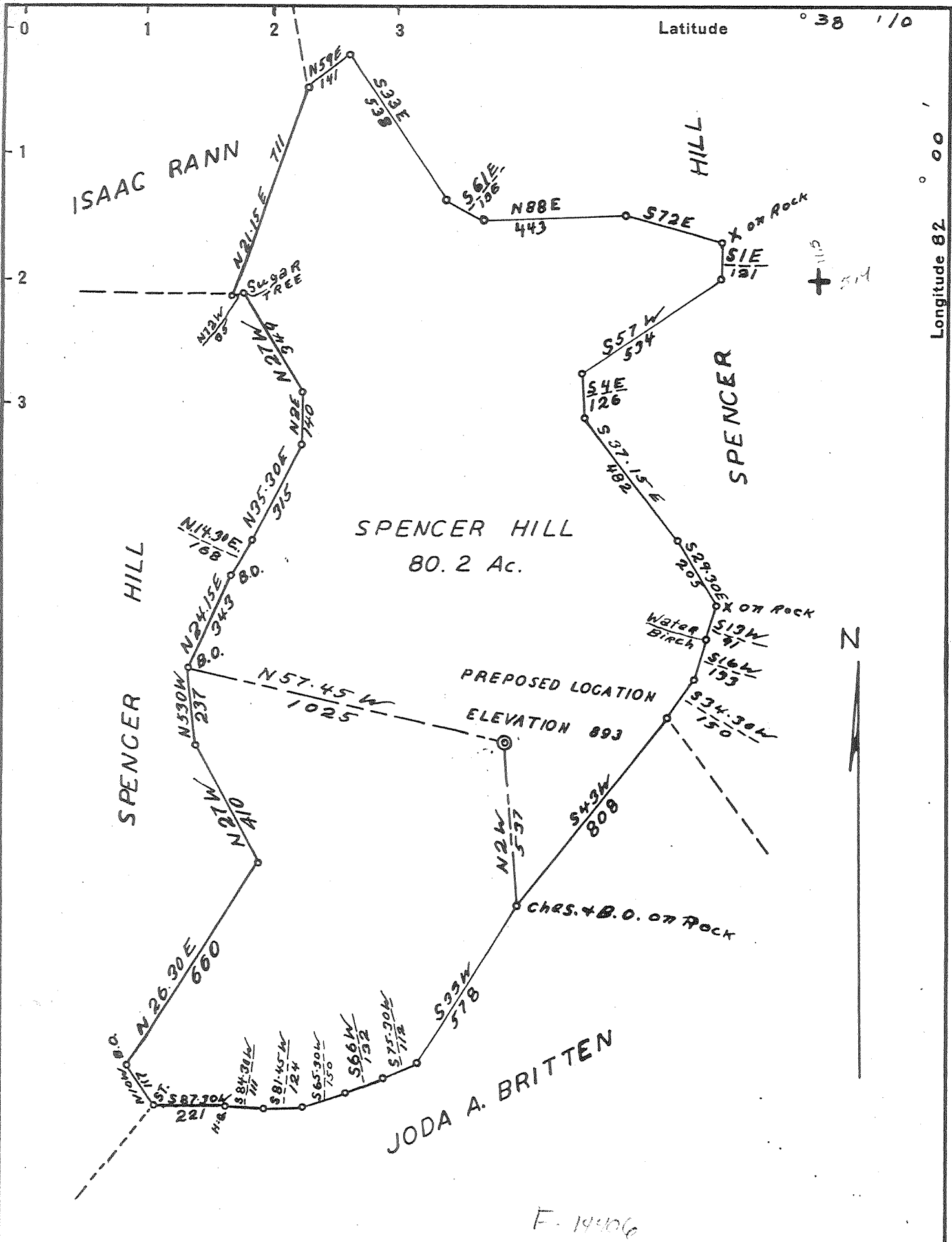
WELL LOCATION MAP

File No. 043-1182

Rep

b-b

(234)



F. 14406

Company KANAWHA GAS & UTILITIES CO.
 Address HAMLIN W. VA.
 Farm SPENCER HILL
 Tract _____ Acres 80.2 Lease No. 144
 Well (Farm) No. 1 Serial No. 203
 Elevation (Spirit Level) 893
 Quadrangle MIDKIFF
 County LINCOLN District JEFFERSON
 Engineer S. J. Haworth
 Engineer's Registration No. 220
 File No. _____ Drawing No. _____
 Date 7/23/36 Scale 1" = 400'

STATE OF WEST VIRGINIA
 DEPARTMENT OF MINES
 OIL AND GAS DIVISION
 CHARLESTON

WELL LOCATION MAP
 FILE NO. LIN-182

+ Denotes location of well on United States Topographic Maps, scale 1 to 62,500, latitude and longitude lines being represented by border lines as shown.

- Denotes one inch spaces on border line of original tracing.

LINCOLN 182

SPENCER HILL 203

Elevation 893'

Midkiff quad.
EC

38° 10'

15' location

S 2.80

W 1.55

100° 22'



Spencer Hill No. 1 (203) Well.

Jefferson District, Lincoln County, W. Va.
 By Kanawha Gas & Utilities Company. (Sold to R. H. Adkins).
 Permit No. Lin-182.
 Elevation, 893' L.
 31 M. cu. ft. gas; R. P., 372 lbs. (Berea and Shale).
 Located 2.8 mi. S. of 38° 10' and 1.55 mi. W. of 82° 00'—EC—Midkiff
 Quadrangle.
 On west side of Mud River, 3000' below mouth of Bear Branch.
 0.95 mi. S. E. of Spurlockville; 2.74 mi. E. of Allen.

	Top.	Bottom.	Thickness.	Elevation (top)
Big Lime -----	1545	1742	197	— 652
Big Injun Sand -----	1742	1777	35	— 849
Berea Sand -----	2225	2250	25	—1332
Corniferous Lime -----	4137	4247	110	—3244
Oriskany Sand -----	4247	4252	5+	—3354

Thickness, Devonian Shales, 1887 feet. Total depth, 4252'.
 Remarks: Completed Jan. 21, 1937. Shot at 4250', 3625', and 2247'.
 Tools dropped 3900' while drilling in Oriskany Sand and could
 not be recovered.
 On 100 acres.

(234) Palermo-Mud River

DEEP WELL

WEST VIRGINIA DEPARTMENT OF MINES

OIL AND GAS DIVISION

Formit No. Lin-182

WELL RECORD

Gas Well

Midkiff Quad.

Company - Kanawha Gas & Utilities Co.
 Address - P.O. Box 1642, Charleston, W. Va.
 Farm - Spencer Hill. Acres 100
 Location - Mud River
 Well No. - 203. Elev. 893
 District - Jefferson. County - Lincoln
 Surface & Mineral - Spencer Hill
 Drilling - Commenced - 8-15-36
 Completed 1-21-37
 Date Shot - 1-7-11 & 14, 1937. Depth - 4250'
 3625' & 2247'

CASING & TUBING

6 1/2 180'
 6-5/8 1545' 6"

PACKER

Kind - Nonc
 Size - 6-5/8" shoe
 Depth - 1545' 6"

Volume - 31,300 Cu. Ft.
 Rock Press. - 372 lbs. 24 hrs.
 Oil - None
 Fresh Water -
 Salt Water -

2.8 S. of 38° 10'
 1.55 W. of 82° 00'

EC

See Vol. XVII, p 602.

Formation	Color	Top	Bottom	Result	Formation	Color	Top	Bottom	Result
Surface		00	13						
Little Dunkard		488	531						
White Slate		531	550						
White Sand		550	570						
Black Slate		570	647						
White Sand		647	669						
White Slate		669	724						
Salt Sand		724	959						
White Slate		959	969						
Salt Sand #2		969	1108						
Dark Slate		1108	1271						
Gray Sand		1271	1315						
Slate		1315	1325						
Maxon Sand		1325	1395						
White Slate		1395	1420						
Red Rock		1420	1429						
Blue Slate		1429	1450						
White Slate		1450	1466						
Shell Gritty		1466	1480						
Black Slate		1480	1494						
Little Lime		1494	1538						
Pencil Cave		1538	1545						
Big Lime		1545	1742						
Big Injun		1742	1777						
Slate & Shells		1777	1865						
Big Shell		1865	1967						
Slate		1967	2205						
Coffee Shale		2205	2225						
Berea Sand		2225	2250						
White Slate		2250	2440						
Gray Shell		2440	2537						
Slate & Shells		2537	3277						
Black Slate		3277	3331						
Brown Shale		3331	3395						
Lime Shell		3395	3425						
Brown Shale		3425	3620						
Shell		3620	3625						
White Slate		3625	3978						
Brown Shale		3978	4103						
Lime Shell		4103	4115						
Brown Shale		4115	4137						
C. Lime		4137	4247						
Oriskany		4247	4252						

NOTE: Well was drilling at 42522 in the Oriskany Sand when the tools were dropped about 3900' and the drill crew was not able to take the tools out of the Hole. A 30 qt. dump shot was put into this and and shot with no results. Hole was bridged at 3625' and shale was shot with 1900# of Gelatine, hole was bridged again at 2247' and shot with 40 qts. Nitro Glycerine in the Berea Sand. After cleaning out 3 days the well shut in 7/10 water in 1" opening. Before shooting any sands the open flow test was 3/10 water in 1" opening.

No sample

Deep Well