

1 2 3

Latitude 38 05'

Longitude 82° 00'

F.F. STARCHER MIN'L
W.J. HAULDREN-SURF.

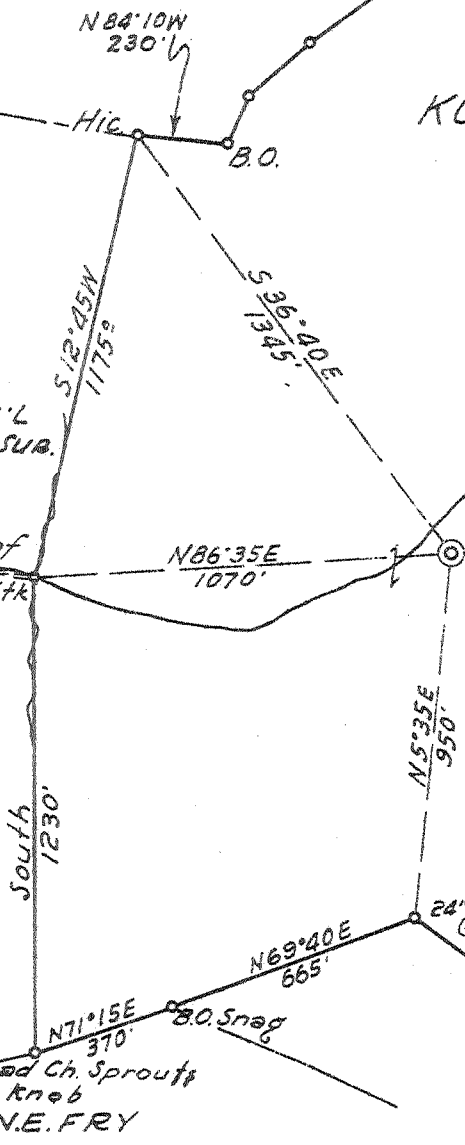
2.35 S
2.24 W

#1538
KOONTZ REALTY CO.
437 AC
Part of 1500 AC.

H.D. & G. Co. MIN'L
W.J. HAULDREN-SURF.

Sulphur Branch of
Big Ugly Creek

SERIAL #692
ELEV. 773.69



New Location.
Drill Deeper
Abandonment.

Dead Ch. Sprouts
on knob
N.E. FRY

JOE VANNATER

Company THE OWENS LIBBEY-OWENS GAS DEPT.
 Address BOX 2111 CHARLESTON 28 W.VA.
 Farm KOONTZ REALTY CO
 Part 1500 AC.
 Tract 5 Acres 437 Lease No. 1538
 Well (Farm) No. ONE Serial No. 692
 Elevation (Spirit Level) 773.69
 Quadrangle MIDKIFF SE
 County LINCOLN District HARTS CR
 Engineer T. S. Flournoy
 Engineer's Registration No. 269
 File No. _____ Drawing No. _____
 Date AUG. 2, 1944 Scale 1 IN = 500 FT.

STATE OF WEST VIRGINIA
DEPARTMENT OF MINES
OIL AND GAS DIVISION
CHARLESTON

WELL LOCATION MAP
FILE NO. Lin-552

+ Denotes location of well on United States
Topographic Maps, scale 1 to 62,500. Lat-
itude and longitude lines being represented
by border lines as shown.

- Denotes one inch spaces on border line
of original tracing.

6-6 275

IMPERIAL TRACING CO.
K & E CO., N.Y.

Samples (MI 11-K) (1233-4163)
(3013-4022)

Deep Well

WEST VIRGINIA DEPARTMENT OF MINES
OIL & GAS DIVISION
W E L L R E C O R D

Permit No. Lin 552
Midkiff Quad.
Company
Address
Farm
Location
Well No.
District
Surface
Mineral
Commenced
Completed
Date shot
Open flow
Volume
Rock Pressure
Fresh Water
Salt Water

The Owens, Libbey-Owens Gas Dept.
P.O. Box 2111, Charleston, 28, W.Va. 8½ 530 530
Koontz Realty Co. Acres 1500 6 5/8 1399 1399
Sulphur Creek 3½ 3208 3208
692 Elev. 774
Harts Creek Lincoln County
Koontz Realty Co., Union Bldg., Charleston, W.Va.
Koontz Realty Co., Union Bldg., Charleston, W.Va.
9-7-44
10-31-44
2013 to 3200 with 9700# Detonite
14/10ths W in 2" Plate
117 M CF
477 lbs. 34 hrs.
50 3 bail per hr.;
730' hole filling

Gas Well
CASING & TUBING

CW Comb W & A Packer
Size 3½ x 7 x 16
Depth 1511-1517
Perf. top 2723
" bot 3150

No coal

Gravel	Br	S	0	12	Brown Shale	Br	S	3164	3178
Sand	Lt	S	12	27	Shell	Dk	S	3178	3204
Slate	Gr	S	27	154	Brown Shale	Dk	H	3204	3230
Sand	Gr	H	154	216	Shell	Dk	H	3230	3265
Slate	Gr	S	216	237	Slate & Shell	Dk	M	3265	3337
Slate	Wh	S	237	265	Slate	Gr	S	3337	3395
Sand	Wh	M	265	284	Slate & Shell	Br	M	3395	3473
Slate	Dk	S	284	314	Slate	Br	S	3473	3504
Sand	Gr	H	314	324	Slate	Gr	S	3504	3550
Slate	Gr	S	324	410	Slate & Shell	Gr	M	3550	3585
Slate	Dk	S	410	544	Slate	Gr	S	3585	3853
Sand	Wh	H	544	557	Shale	Br	S	3853	3949
Slate	Dk	S	557	632	Shell	Bk	H	3949	3959
Sand	Gr	S	632	697	Shale	Bk	S	3959	4013
15? Sand	Wh	H	697	721	Lime	Dk	H	4013	4019
24? Sand	Gr	S	721	901	Corniferous Lime	Gr	H	4019	4022
Slate	Dk	S	901	990	T.D.				4022
Sand	Wh	H	990	1204					
Slate	Gr	S	1204	1210	Gas 1449-1450	46 M			
Shell	Wh	H	1210	1222	Gas 1584 inc. from 4 M to 5½ M				
Red Rock		S	1222	1227	Gas 1735 inc. from 5 M to 6½ M				
Slate	Gr	S	1227	1235	Gas 2096-2117	15½ M			
Slate & Shell	Gr	S	1235	1257	Gas 2245 inc. from 14 M to 15½ M				
Lime Shell	Dk	H	1257	1279	Gas 2488 inc. from 15½ M to 18 M				
Slate	Dk	S	1279	1286	Gas 2901 inc. from 15½ M to 17 M				
Red Rock		S	1286	1291	Gas 3057 inc. from 16 M to 19 M				
Shell	Dk	H	1291	1314	Gas 3124-3140 inc. from 18 M to 26 M				
Slate	Dk	S	1314	1336	Gas 3863 inc. from 22 M to 25 M				
4. Lime? R? Slate	Bk	H	1336	1372					
Big Lime	Gr	H	1372	1375					
Sand	Red- ^{mc?}	H	1375	1562					
Sand	Gr- ^{B.I.?}	H	1562	1600					
Slate	Dk	S	1600	1620					
Slate & Shell	Lt	S	1620	1649					
Sand Shells	Gr	H	1649	1764					
Slate & Shell	Gr	S	1764	1798					
Sandy Shell	Gr	H	1798	2019					
Slate & Shell	Gr	S	2019	2035					
Brown Shale	Br- ^{hg?}	S	2035	2077					
Berea Sand	Gr	H	2077	2096					
Slate	Drk	S	2096	2118					
Shells	Gr	H	2118	2127					
Slate	Dk	S	2127	2147					
Shell	Gr	H	2147	2151					
Slate & Shell	Gr	S	2151	2200					
Shell	Dr	H	2200	2683					
Slate & Shell	Gr	S	2683	2727					
Lime Shell	Dk	H	2727	2779					
Slate & Shell	Dk	S	2779	2870					
Shell	Dk	S	2870	2901					
Slate & Shell	Dk	S	2901	2978					
Shell	Dk	H	2978	3024					
Slate & Shell	Dk	S	3024	3164					

4019
774
-3245-