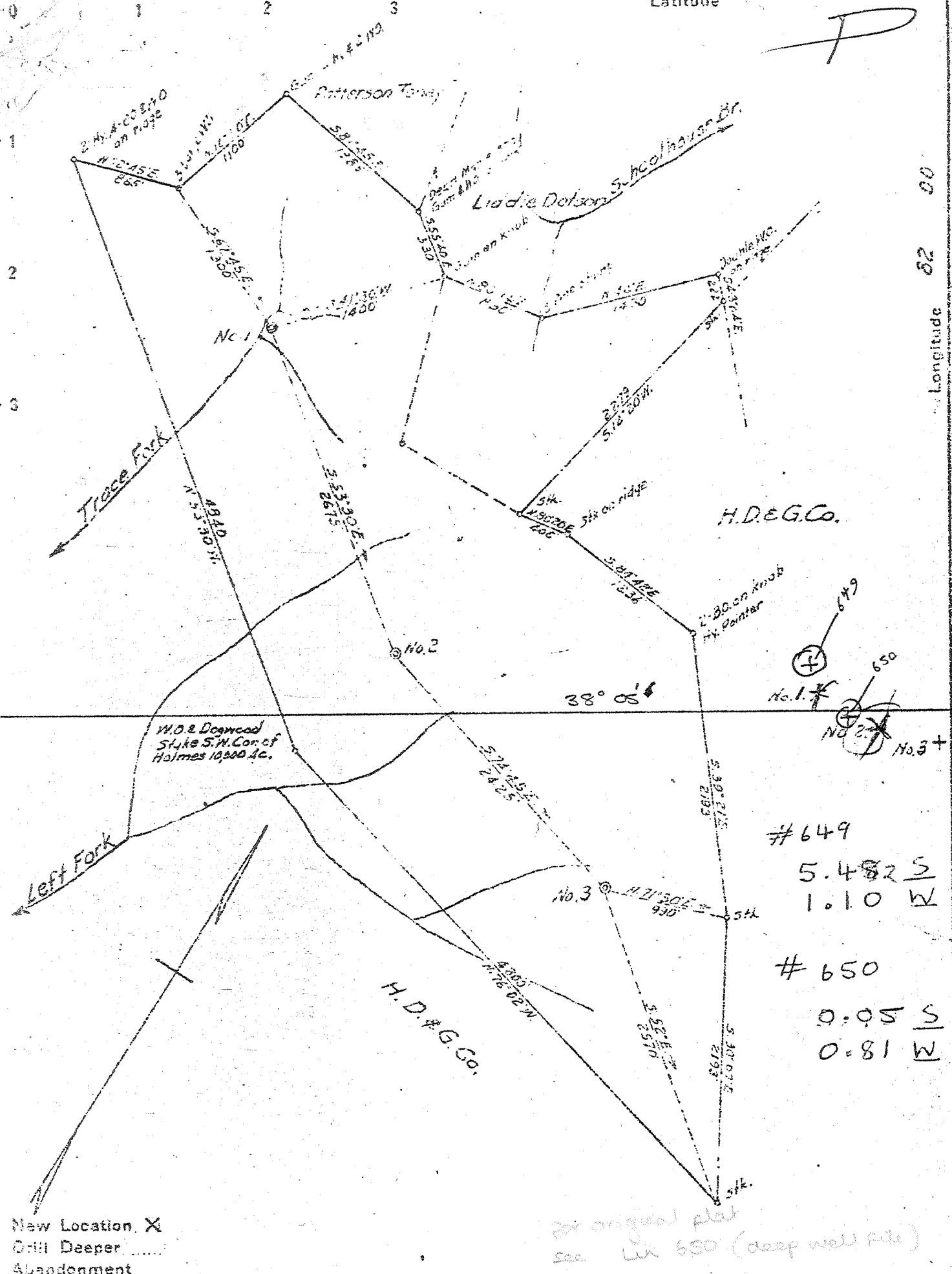


P



Longitude 82 00

New Location, X  
 Drill Deeper .....  
 Abandonment .....

For original plat  
 see well 650 (deep well file)

#649  
 5.482 S  
 1.10 W

#650  
 0.05 S  
 0.81 W

Company R. H. ADKINS  
 Address HAMLIN, W. VA.  
 Farm HUNTINGTON DEV. & GAS CO.  
 Tract \_\_\_\_\_ Acres 474 Lease No. \_\_\_\_\_  
 Well (Farm) No. 1-223 Serial No. \_\_\_\_\_  
 Elevation (Spirit Level) 1=950, 2=1090, 3=1070.  
 Quadrangle MIDKIFF EC & SE  
 County LINCOLN District HARTS CREEK  
 Engineer E. B. Curing  
 Engineer's Registration No. 309  
 File No. \_\_\_\_\_ Drawing No. \_\_\_\_\_  
 Date 8-28-45 Scale 1" = 1000'

STATE OF WEST VIRGINIA  
 DEPARTMENT OF MINES  
 OIL AND GAS DIVISION  
 CHARLESTON

WELL LOCATION MAP  
 LIN 649 #1 EC  
 FILE NO. LIN 650 #2 SE  
~~LIN 651 #3~~

+ Denotes location of well on United States Topographic Maps, scale 1 to 62,500. Latitude and longitude lines being represented by border lines as shown.

- D notes one inch spaces on the \_\_\_\_\_ of original tract \_\_\_\_\_

Deep Well

WEST VIRGINIA DEPARTMENT OF MINES  
OIL & GAS DIVISION  
W E L L R E C O R D

Gas Well  
CASING & TUBING

Permit No. Lin 649			
Midkiff Quad.			
Company	Leet Gas Company		
Address	Hamlin, W.Va.	10	14
Farm	Huntington Dev. & Gas Co. A	8½	268
Location	Big Ugly Creek	6 5/8	1783
Well No.	1 Elev.	2	1867
District	Harts Creek Lincoln County		
Surface			
Mineral	Huntington Development & Gas Co. Charleston, W.Va.		
Commenced	Oct. 16, 1945		
Completed	March 27, 1946		
Date shot	3-19-46 Depth 2540 to 4493 with 22,000 # detonite		
Open flow	4 1/10ths W in 2"		
Volume	360,000 C.F.		
Fresh Water	90' 385'		

Surface	0	6
Yellow Sand	6	40
Slate	40	55
Coal	55	58
Sand	58	110
Coal	110	116
Sand	116	180
Slate	180	225
Sand	225	250
Slate	250	255
Coal	255	259
Slate	259	275
Sand	275	345
Slate	345	385
Broken Sand	385	540
Slate & Shells	540	720
Sand	720	830
Slate & Shells	830	990
Salt Sand	990	1077
Slate	1077	1125
Sand	1125	1315
Slate	1315	1465
Sand	1465	1650
Slate Shells	1650	1690
Red Rock	1690	1698
Slate & Shells	1690	1725
Shell	1725	1735
Slate	1735	1766
Little Lime	1766	1794
Pencil Cave	1794	1798
Big Lime	1798	1977
Keener Sand	1977	1998
Big Injun	1998	2033
Slate & Shells	2033	2148
Big Shell	2148	2198
Slate Shells	2198	2500
Brown Shale	2500	2515
Berea Sand	2515	2541-
Shell	2541	2554
Slate	2554	2625
Slate & Shells	2625	2728
Shell	2728	2795
Shell & Slate	2795	2875
Slate & Shells	2875	3632
Brown Shale	3632	3680
Shell	3680	3732
Brown Shale	3732	3965
White Shale	3965	4310
Brown Shale	4310	4493
Corniferous Lime		4493
Total Depth		4493