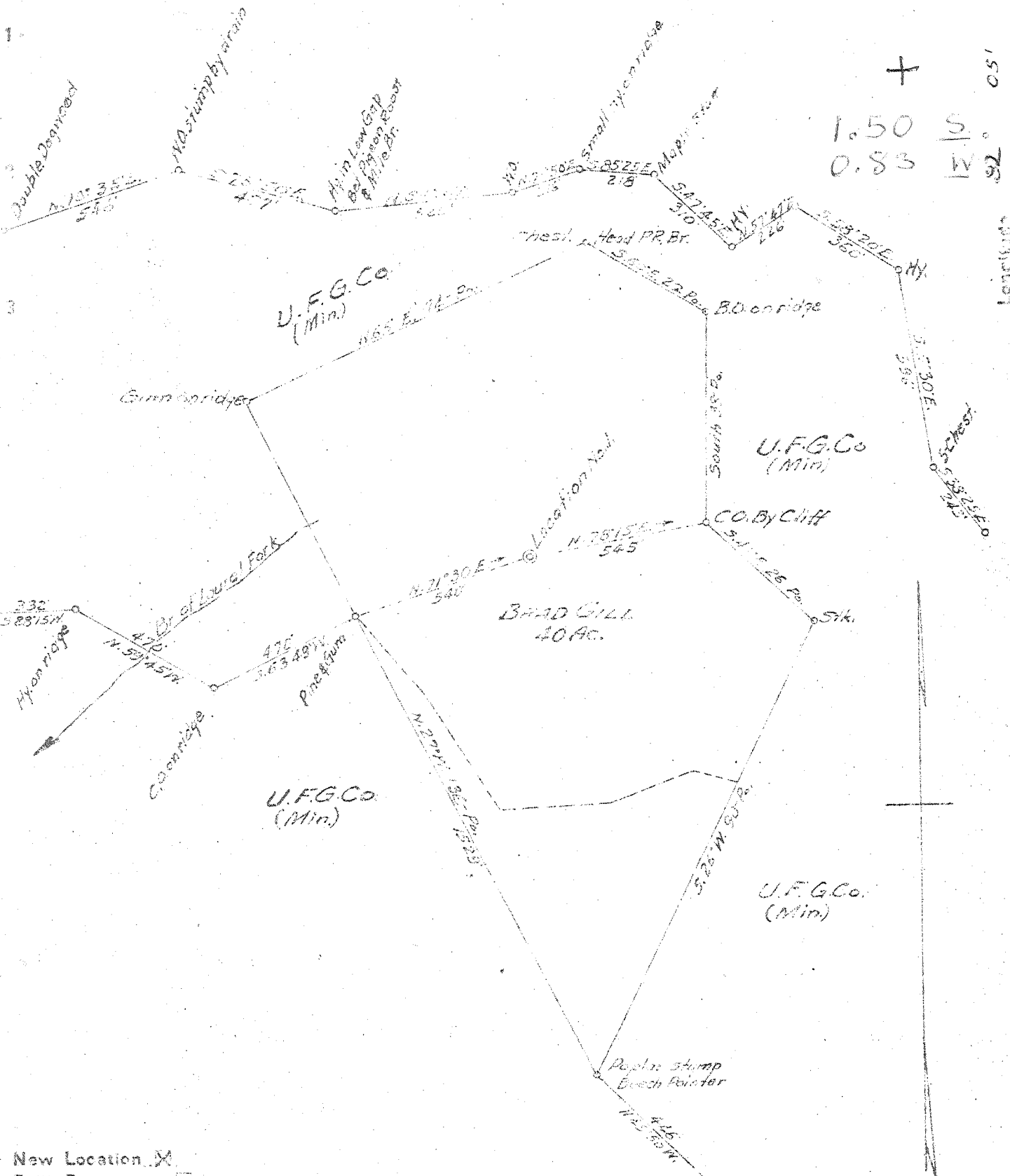


M

Latitude 38° 05'

P



1.50 S  
0.83 W

New Location  X  
 Drill Deeper   
 Abandonment

Company PIGEON CREEK GAS CO.  
 Address HAMLIN  
 Farm BRAD GILL  
 Tract \_\_\_\_\_ Acres 40 Lease No. \_\_\_\_\_  
 Well (Farm) No. 1 Serial No. \_\_\_\_\_  
 Elevation (Spirit Level) 1175  
 Quadrangle MIDKIFF S  
 County LINCOLN District HARTS CREEK  
 Engineer L. G. Ewing  
 Engineer's Registration No. 303  
 File No. \_\_\_\_\_ Drawing No. \_\_\_\_\_  
 Date 11-6-48 Scale 1"=100'

STATE OF WEST VIRGINIA  
 DEPARTMENT OF MINES  
 OIL AND GAS DIVISION  
 CHARLESTON

WELL LOCATION MAP  
 FILE NO. LIN-883

+ Denotes location of well on United States Topographic Maps, scale 1 to 62,500, latitude and longitude lines being represented by border lines as shown.

- Denotes one inch spaces on border line of original tracing.

Deep Well

No samples in 275

WEST VIRGINIA DEPARTMENT OF MINES  
OIL & GAS DIVISION  
W E L L R E C O R D

Permit No. Lin 883

Gas Well  
CASING & TUBING

Midkiff Quad.				
Company	Figeon Creek Gas Company			
Address	Hamlin, W.Va.	10	20	20
Farm	Brad Gill Acres 40	8 1/2		242
Location	Figeon Creek	6 5/8		1870
Well No.	1 Elev. 1175	3		3718
District	Harts Creek Lincoln County			
Surface				
Mineral	Brad Gill and others, Gill, W.Va.			
Commenced	Jan. 17, 1949			
Completed	May 2, 1949			
Date shot	April 28, 1949 Depth 1982 to 4365 with 13,950# detonite			
Open flow	50/10ths W in 3"			
Volume	744,000 C.F.			

Soil	s	0	200	
Slate Gr	S	200	225	
Coal Blk		225	228	
Slate Gr	S	228	255	
Sand	H	255	305	
Slate Gr	S	305	325	
Sand	H	325	445	
Slate Gr	S	445	485	
Sand	H	485	800	
Shell	H	800	835	
Slate & Shells	H	835	850	
Sand	H	850	900	
Slate & Shells	H	900	945	
Gas Sand	H	945	970	
Slate & Shells	H	970	1020	
Salt Sand	H	1020	1202	
Slate Gr	S	1202	1206	
Salt Sand	H	1206	1425	
Slate Gr	H	1425	1452	
Sand	H	1452	1482	
Slate Gr	S	1482	1550	
Shell	H	1550	1572	
Maxon Sand	H	1572	1715	
Slate Gr	S	1715	1718	
Red Rock	H	1718	1723	
Slate Gr	S	1723	1745	
Red Rock	H	1745	1755	
Slate & Shells	H	1755	1798	
Little Lime	H	1798	1840	
Pencil Cave	S	1840	1845	
Big Lime	H	1845	2026	
Red Injun	H	2026	2070	
Injun Sand Red	H	2070	2098	
Slate & Shells		2098	2210	
Big Shell	H	2210	2264	
Slate & Shells	H	2264	2568	
Brown Shale	S - sby?	2568	2582	
Berea Sand		2582	2604	
Slate & Shells	H	2604	3566	
Brown Shale	H	3566	4250	? 3566 3890 - Brown shale (Muron?)
Brown Shale	S	4250	4260	3890 - 4250 - wh. slate?
Shale Dk Br	S	4260	4330	
Brown Shale	S	4330	4351	
Shale Dk Br	S	4351	4365	
Corniferous Lime	H	4365	4366	
Total depth		4366		