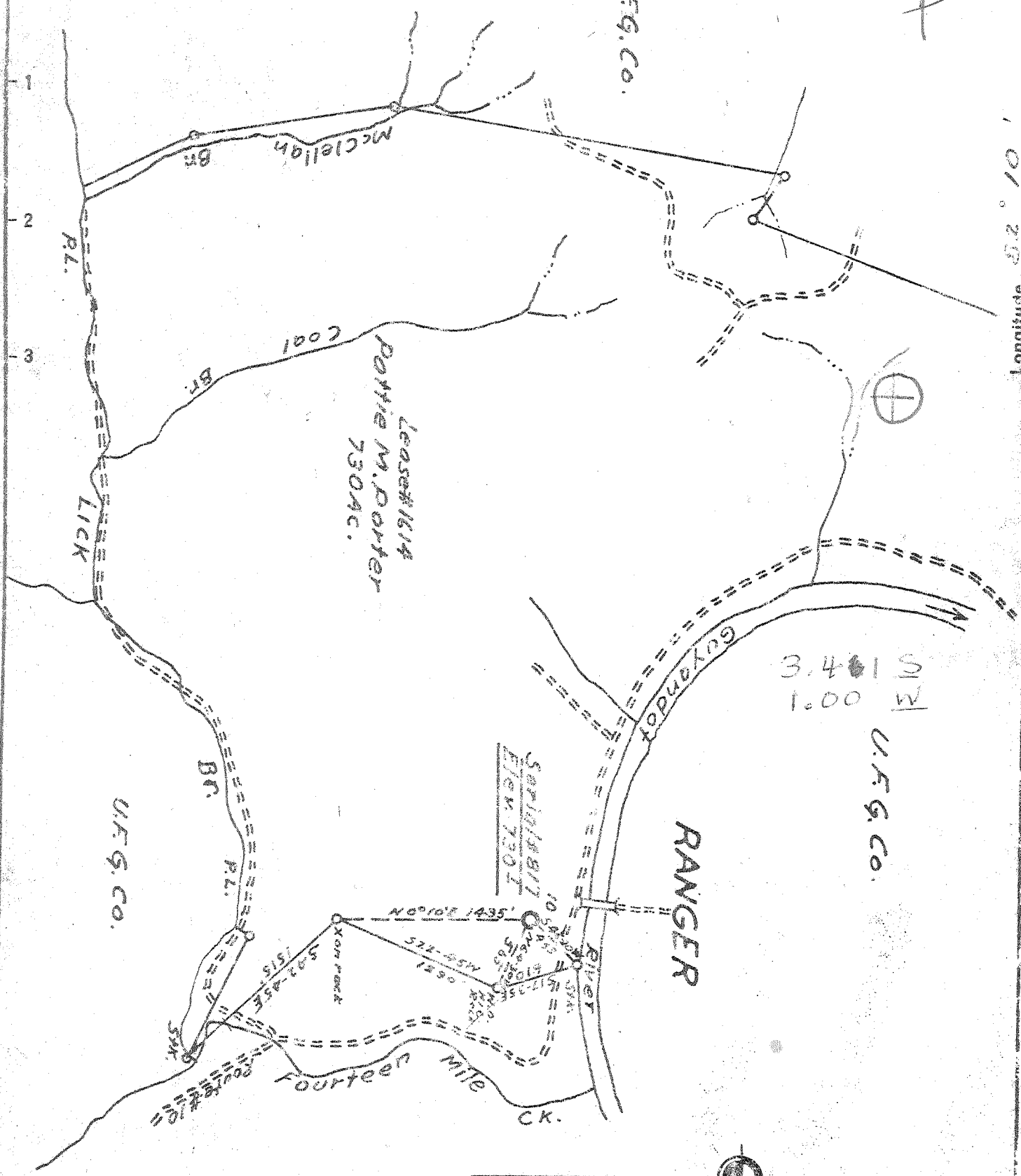


Latitude 38° 10'

P

Longitude 81° 25'



- New Location.
- Drill Deeper.
- Abandonment.

Company Owens, Libbey-Owens Gas Dept.
 Address Box 4158 Charleston 4 W. Va.
 Farm Pattie M. Porter
 Tract _____ Acres 730 Lease No. 1614
 Well (Farm) No. 10 Serial No. 817
 Elevation (Spirit Level) 730.2 WC
 Quadrangle Midkiff 4 53 42" W 1.01"
 County Lincoln District Laurel Hill
 Engineer T.S. Flournoy
 Engineer's Registration No. 269
 File No. _____ Drawing No. _____
 Date Feb. 1, 1951 Scale 1" = 1000'

STATE OF WEST VIRGINIA
 DEPARTMENT OF MINES
 OIL AND GAS DIVISION
 CHARLESTON

WELL LOCATION MAP
 FILE NO. LI-983

- + Denotes location of well on United States Topographic Maps, scale 1 to 62,500, latitude and longitude lines being represented by border lines as shown.
- Denotes one inch spaces on border line of original tracing

6-6 233

Deep Well

No Samples

WEST VIRGINIA DEPARTMENT OF MINES
OIL & GAS DIVISION
W E L L R E C O R D

Permit No. Lin-983

Gas Well

Midkiff Quad.

Company Owens, Libbey*Owens Gas Co.
Address P. O. Box 4158, Charleston, W. Va.
Farm P. M. Porter Acres 730
Location Guyandot River
Well No. 10 (OLO Serial No. 817) Elev. 730.1
District Laurel Hill County Lincoln
Mineral Pattie M. Porter et al, 2024 A
Park Avenue, Richmond, Va.

Casing & Tubing

8-1/4	280'	280'	
6-5/8	1307'	1307'	
5-3/16	1718'	1718'	

Commenced 4/2/51
Completed 6/18/51
Date shot 6/21/51 from 2450 to 3647
With 7,200# detonite

Volume			
Surface		0	15
Slate	black	15	34
Coal	black	34	39
Sand	white	39	225
Slate	white	225	237
Coal	black	237	240
Sand	white	240	258
Slate	black	258	305
Slate & shs.	dark	305	395
Sand	white	395	445
Shells	dark	445	518 g
Salt sand	white	518	1120
Slate & shs.		1120	1243
Little Limo	dark	1243	1280
Pencil cave	black	1280	1282
Big Lime		1282	1468
Big Injun	red	1468	1471
Big Injun	red	1471	1506
Big Injun	grey	1506	1560
Big Injun	white	1560	1566
Slate & shs.	white	1566	1715
Lime shell	black	1715	1750
Slate & shs.	white	1750	2047
Coffee shale	brown	2047	2066
Berea sand	white	2066	2076
Slate & shs.	Dark & wh.	2076	2110
Shale	dark	2110	2120
Shells	dark	2120	2146
Shells	white	2146	2398
Slate & shs.	dark	2398	2433
Shells	white	2433	2443
Brown shale	brown	2443	2503
Slate & shs.	white	2503	2595
Shale & shs.	brown	2595	2644
Shells & sl.	white	2644	2930
Shale & shs.	brown	2930	2948
Shale & shs.	white	2948	2972
Slate & shs.	brown	2972	3003
Brown shale	brown	3003	3028
Shale & shs.	brown	3028	3064
Brown shale	brown	3064	3090
Shale & shs.	brown	3090	3129
Shale & shs.	brown	3129	3242
Slate & shs.	white	3242	3499
Shale	black	3499	3520
Brown shale	brown	3520	3647
Corniferous Lime	Dark	3647	3648
Total Depth			3648

Notes:

Water 290' 2 BFH
Gas 500' bubble
water 605'
water standing 140' before running csg.
Gas 1382-1388 537 M
blew down to 366M
Test 1456 208M
Gas 1464 314 M
Gas 1471 370 M
Test 1506-1516 249 M
Gas 1526 281 M
Gas 1534 350 M
Gas 2069 3.3
Test 3090 2.7 M
Gas 3110 4.5 M
Gas 3110 15.3 M
Test 3467 6.8 M
Gas 3499 7.5 M
Gas 3648 7.8 M
Test before shot 7.7 M
Test after show 77 M
When shut in 79 M
Volume 249 M Big Lime
79 M berca , shells & shale
Rock Pressures 58 hrs. 202# big Limo
" # 286# shale
Acidized with 1,000 gas. acid 5/1/51
Test before acid 317 M. Acid did not
help. No test of gas reported after
acid.

3647
732
2915