

9M

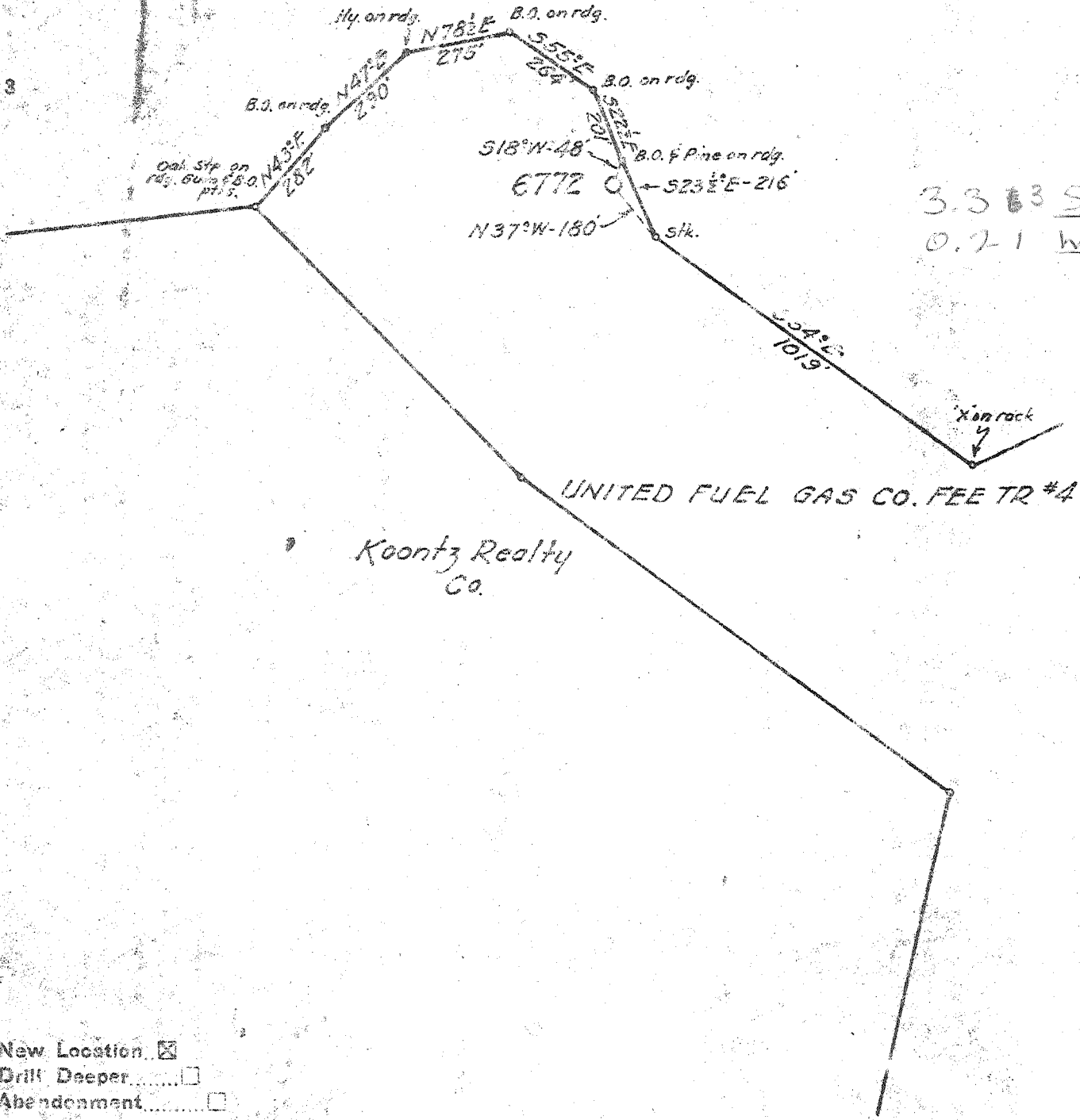
Latitude 38 05

3862 P

U. F. G. CO. min.

0.46 S
0.21 W

Longitude 82 05'



3.3 S
0.21 W

New Location
 Drill Deeper
 Abandonment

Company UNITED FUEL GAS CO.
 Address CHARLESTON, W. VA.
 Farm UNITED FUEL GAS CO. FEE TR #4
 Tract _____ Acres 897.75 Lease No. 24690
 Well (Farm) No. _____ Serial No. 6772
 Elevation (Spirit Level) 1159.53
 Quadrangle MIDKIFF Big Creek 7.5
 County LINCOLN District HARTS CREEK
 Engineer [Signature]
 Engineer's Registration No. 602
 File No. 26-37 Drawing No. _____
 Date 5-11-51 Scale 1" = 400'

STATE OF WEST VIRGINIA
 DEPARTMENT OF MINES
 OIL AND GAS DIVISION
 CHARLESTON

WELL LOCATION MAP

FILE NO. LIN 928

+ Denotes location of well of United States
 Topographic Maps, scale 1" to 62,500, lat-
 itude and longitude lines being represented
 by border lines as shown.

- Denotes one-inch spaces on border line
 of original tracing.

No Samples

6-6 275

Deep well

WEST VIRGINIA DEPARTMENT OF MINES
OIL & GAS DIVISION
W E L L R E C O R D

Permit No. LIN-998
Midkiff Quad.

Gas

Company	United Fuel Gas Company	CASING & TUBING	
Address	Box 1273, Charleston 25, W.Va.		
Farm	U.F.G.Co.FeeTr.#4 Acres 8971.75	10	21.3'
Location	Greenshoal Br.	8 5/8	605'
Well No.	6772 Elev. 1159.53	7"	1803'
District	Harts Creek County - Lincoln		
Mineral	United Fuel Gas Co.		
Commenced	7/30/51		
Completed	11/19/51		
Date Shot	11/20/51 from 2580 to 3875		
With	8466 2/3# DuPont Gelatin		
Open Flow	28/10ths Water in 2"		
Volume	223 M		
Pressure	350 lbs. 48 hours		

Surface Sand	0	10	Slate	1350	1365
Sand	10	43	Sand	1365	1650
Slate	43	48	Slate & Shells	1650	1675
Coal	48	52	Red Rock	1675	1680
Slate	52	75	Slate	1680	1695
Sand	75	131	Red Rock	1695	1700
Slate	131	142	Mud	1700	1715
Sand	142	162	Red Rock	1715	1720
Coal	162	164	Red Rock	1720	1748
Slate	164	187	Little Lime	1748	1780
Sand	187	215	Pencil Cave	1780	1783
Coal	215	219	Big Lime	1783	1918
Sand	219	240	Keener Sand	1918	1927
Slate	240	245	Red Injun	1927	2004
Sand	245	260	Slate & Shells	2004	2127
Slate	260	270	Big Shell	2127	2214
Sand	270	285	Slate & Shells	2214	2503
Slate	285	320	Brown Shale	2503	2513
Sand	320	370	Berea Grit	2513	2531
Coal	370	373	Slate	2531	2540
Slate	373	435	Shells	2540	2565
Sand	435	465	Slate & Shells	2565	3576
Slate	465	470	Brown Shale	3476	3650
Coal	470	473	White Slate	3650	3675
Sand	473	509	Brown Shale	3675	3875
Blue Mud	509	558	White Slate	3875	4215
Sand	558	590	Brown Shale	4215	4326
Slate	590	625	Corniferous Lime	4326	
Sand	625	648	TOTAL DEPTH	4326'	SLM
Slate	648	680			
Sand	680	689			
Slate	689	730	Gas in Big Lime 1900' 12/10 W 1"		
Sand	730	748	36 M. Blew down to 1/10 W 1"		
Slate	748	910	11 M.		
Sand	910	935	Gas 3865' 7/10 W 1" 28 M		
Slate	935	1044	Test before shot 4/10 W 1" 21 M		
Salt Sand	1044	1288	Shot 11/20/51 with 3466 2/3# DuPont		
Slate	1288	1320	Gelatin 2580-3875		
Hard Sand	1320	1350	Test 20 hours after shot 28/10 W		
			2" 223 M		

FINAL OPEN FLOW - 223 M - Brown Shale 48 Hr. R.P. 350#.
Shut in 11/21/51 in 7" Casing.

PER 10 107
Permitting
Office of Oil & Gas

State of West Virginia
Division of Environmental Protection
Section of Oil and Gas

Well Operator's Report of Well Work

Farm name: COLUMBIA NAT'L RESOURCES Operator Well No.: 6772

LOCATION: Elevation: 1,159.53 Quadrangle: BIG CREEK

District: HARTS CREEK County: LINCOLN
Latitude: 2500 Feet South of 37 Deg. 2 Min. 30 Sec.
Longitude 650 Feet West of 82 Deg. 5 Min. 0 Sec.

Company: COLUMBIA NATURAL RESOURCE
P. O. BOX 6070
CHARLESTON, WV 25362-0000

Agent: W. A. WATSON, JR.

Inspector: RICHARD CAMPBELL
Permit Issued: 10/04/96
Well work Commenced: 7-31-96
Well work Completed: 9-11-96
Verbal Plugging
Permission granted on: N/A
Rotary Cable ^x Rig
Total Depth (feet) 4326
Fresh water depths (ft) None on record
Salt water depths (ft) None on record
Is coal being mined in area (Y/N)? N
Coal Depths (ft): 48-52, 162-164, 215-219
370-373, 465-470.

Casing & Tubing Size	Used in Drilling	Left in Well	Cement Fill Up Cu. Ft.
10 3/4	21	21	0
8 3/4	605	605	PKR.
7	1825	1825	PKR.

OPEN FLOW DATA Combined "shot hole" Shale production and Big Lime.

Producing formation Big Lime & Shale Pay zone depth (ft) 1900 & 3865
Gas: Initial open flow 39 MCF/d Oil: Initial open flow 0 Bbl/d
Final open flow 39 MCF/d Final open flow 0 Bbl/d
Time of open flow between initial and final tests 41 days Hours
Static rock Pressure 110 psig (surface pressure) after 72 Hours

Second producing formation N/A Pay zone depth (ft)
Gas: Initial open flow MCF/d Oil: Initial open flow Bbl/d
Final open flow MCF/d Final open flow Bbl/d
Time of open flow between initial and final tests Hours
Static rock Pressure psig (surface pressure) after Hours

NOTE: ON BACK OF THIS FORM PUT THE FOLLOWING: 1). DETAILS OF PERFORATED INTERVALS, FRACTURING OR STIMULATING, PHYSICAL CHANGE, ETC. 2). THE WELL LOG WHICH IS A SYSTEMATIC DETAILED GEOLOGICAL RECORD OF ALL FORMATIONS, INCLUDING COAL ENCOUNTERED BY THE WELLBORE.

For: COLUMBIA NATURAL RESOURCES, INC.

By: [Signature]
Date: 2/6/97

FEB 14 1997

CNR WELL 806772
API # 047-043-0998

Moved in service rig on 07-31-96. Cleaned out cavings from 2,250' - 2,685'. Stopped clean out attempt due to inability to keep enough fluid in hole to drill. Moved rig out on 09-11-96. Discharged pit and reclaimed on 10-15-96.