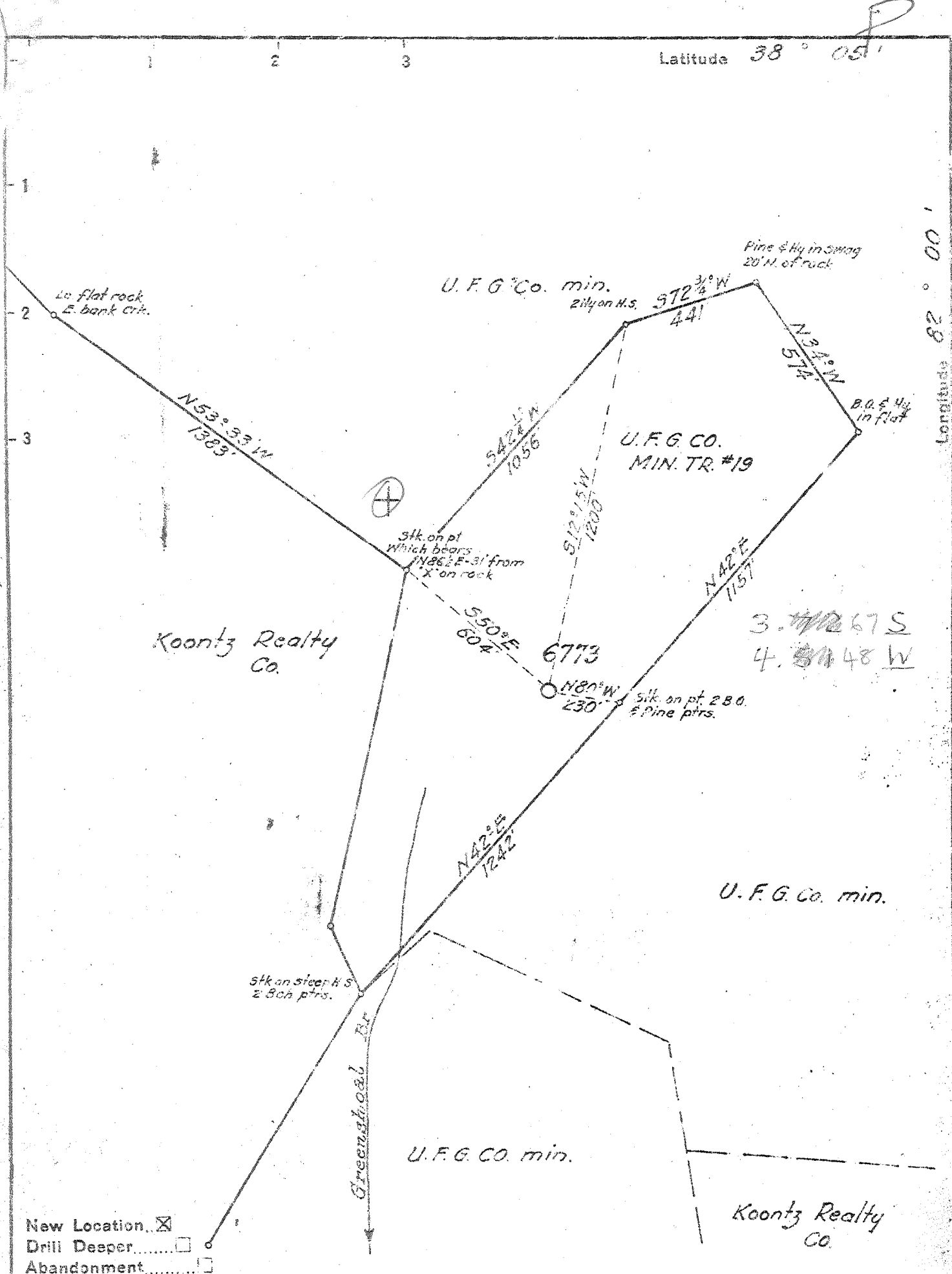


Latitude 38° 05'

Longitude 82° 00'



New Location
 Drill Deeper
 Abandonment

Company UNITED FUEL GAS CO.
 Address CHARLESTON, W. VA.
 Farm UNITED FUEL GAS CO. MIN. TR. #19
 Tract _____ Acres 583.5 Lease No. -
 Well (Farm) No. _____ Serial No. 6773
 Elevation (Spirit Level) 1096.01
 Quadrangle MIDKIFF SE
 County LINCOLN District HARTS CREEK
 Engineer [Signature]
 Engineer's Registration No. 662
 File No. 36:37 Drawing No. _____
 Date 5-2-51 Scale 1" = 400'

STATE OF WEST VIRGINIA
 DEPARTMENT OF MINES
 OIL AND GAS DIVISION
 CHARLESTON.

WELL LOCATION MAP
 FILE NO. LIN-999

+ Denotes location of well on United States Topographic Maps, scale 1 to 62,500, latitude and longitude lines being represented by border lines as shown.
 - Denotes one inch space on border line of original tracing.

Sample 6-6 275 Deep Well

WEST VIRGINIA DEPARTMENT OF MINES
OIL & GAS DIVISION
W E L L R E C O R D

Permit No. LIN-999
Midkiff Quad.

Gas

Company	United Fuel Gas Co.		CASING & TUBING
Address	Box 1273, Charleston 25, W. Va.		
Farm	U.F.G.Co.Min.Tr.#19 Acres 583.50	10	42
Location	Greenshoal Cr. of Guyan R.	8 5/8	600
Well No.	6773 Elev. 1098.01	7	1720
District	Harts Creek County - Lincoln		
Mineral	United Fuel Gas Co.		
Commenced	7/11/51		Bottom Hole Packer
Completed	9/25/51		Size 6 5/8 x 8 1/4 x 10
Date Shot	9/27/51 from 2485 to 4274		Depth Set 1720
With	12,722 1/3# DuPont Gelatin		
Open Flow	64/10 W 2" Volume 337 M		
Pressure	317 lbs. 48 hours		

Surface	0	6	Little Lime	1663	1696
Sand	6	30	Pencil Cave	1696	1700
Blue Mud	30	35	Big Lime	1700	1850
Sand	35	48	Injun Sand	1850	1935
Slate	48	55	Slate & Shells	1935	2055
Sand	55	172	Big Shell	2055	2125
Coal	172	174	White Slate	2125	2290
Slate	174	184	Slate & Shells	2290	2410
Sand	184	194	Coffee Shale	2410	2441
Slate	194	245	Berea Sand	2441	2460
Sand	245	275	Lime Shells	2460	2485
Coal	275	278	Slate & Shells	2485	3480
Slate & Shells	278	335	Grey Shale	3480	3525
Sand	335	374	Brown Shale	3525	3785
Slate & Shells	374	400	White Slate	3785	4125
Coal	400	403	Brown Shale	4125	4272
Slate & Shells	403	425	Corniferous Lime	4272	4274
Sand	425	503	TOTAL DEPTH	4274	
Black Slate	503	524			
Sand	524	556	Water	1720'	1 bph
Slate & Shells	556	581	Water	2600'	4 bph
Coal	581	583	Water	1107'	
Slate & Shells	583	990	Hole full		
Gas Sand	990	1030	Show Gas	1840-1845	
Slate & Shells	1030	1052	Gas 2755-2765, 4/10 W 1" 21 M,		
Salt Sand	1050	1214	blew down to 2/10 W 1" 15 M.		
Slate & Shells	1214	1275	Gas 2876-2890, 6/10 W 1" 24 M		
Sand	1275	1540	blew down to 3/10 W 1" 18 M		
Slate	1540	1545	Gas 3260-3275, 4/10 W 1" 21 M		
Red Rock	1545	1555	Gas 3425-3435, 6/10 W 1" 24 M		
Lime Shells	1555	1567	Gas 3515-3530, 8/10 W 1" 30 M		
Slate & Shells	1567	1578	Gas 3685-3700, 16/10 W 1" 42 M		
Red Rock	1578	1583	blew down to 12/10 W 1" 37 M		
Lime Shells	1583	1595	Gas 4105-4120, 16/10 W 1" 42 M		
Slate	1595	1604	Test before shot 12/10 W 1" 37 M.		
Red Rock	1604	1610	Shot 9/27/51 with 12,733 1/3#		
Lime Shells	1610	1640	DuPont Gelatin from 2485-4274.		
Slate	1640	1663	Test 11 hrs. after shot 64/10		
			W 2" 337 M.		

FINAL OPEN FLOW - 337 M - Brown Shale 48 Hr. Rock Pressure 317#
Shut in 9/28/51 in 7" Casing.

4272
1098

3174