

"I, the undersigned, hereby certify that this map is correct to the best of my knowledge and belief and shows all the information required by paragraph 6 of the rules and regulations of the oil and gas section of the mining laws of West Virginia."

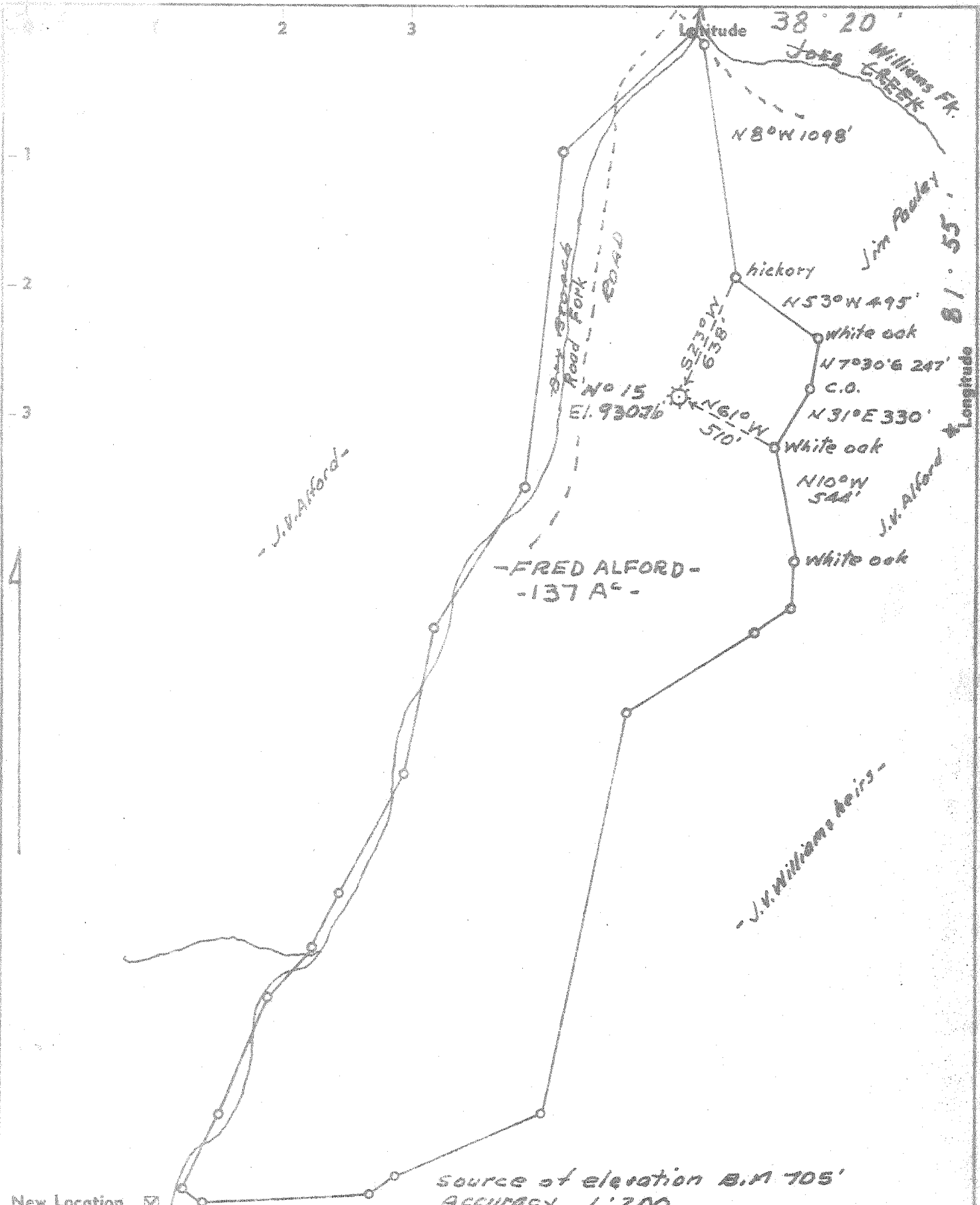
Company JEROME GOLDBERG
 Address P.O. BOX 7, DUNBAR, W.VA
 Farm FRED ALFORD
 Tract ONE Acres 137 Lease No. _____
 Well (Farm) No. 15 Serial No. _____
 Elevation (Spirit Level) 930.76'
 Quadrangle ST. ALBANS SW
 County LINCOLN District DUVAL
 Engineer P.H. Hackney
 Engineer's Registration No. 2442
 File No. _____ Drawing No. _____
 Date 12-10-69 Scale 1" = 600'

STATE OF WEST VIRGINIA
 DEPARTMENT OF MINES
 OIL AND GAS DIVISION
 CHARLESTON

WELL LOCATION MAP
 FILE NO. Lin-1452

+ Denotes location of well on United States Topographic Maps, scale 1 to 62,500, latitude and longitude lines being represented by border lines as shown.

— Denotes one inch spaces on border line of original tracing.



- New Location
- Drill Deeper
- Redrill
- Abandonment

"I, the undersigned, hereby certify that this map is correct to the best of my knowledge and belief and shows all the information required by paragraph 6 of the rules and regulations of the oil and gas section of the mining laws of West Virginia."

Company JEROME GOLDBERG

Address P.O. BOX 7, DUNBAR, W. VA

Farm FRED ALFORD

Tract ONE Acres 137 Lease No. _____

Well (Farm) No. 15 Serial No. _____

Elevation (Spirit Level) 930.76'

Quadrangle ST. ALBANS

County LINCOLN District DUVAL

Engineer P.H. Hackney

Engineer's Registration No. 2442

File No. _____ Drawing No. _____

Date 12-10-69 Scale 1" = 600'

STATE OF WEST VIRGINIA
DEPARTMENT OF MINES
OIL AND GAS DIVISION
CHARLESTON

WELL LOCATION MAP

FILE NO. Lin-1452

— Denotes location of well on United States Topographic Maps, scale 1 to 62,500, latitude and longitude lines being represented by border lines as shown.

— Denotes one inch spaces on border line of original tracing.



MAY 19 1970

STATE OF WEST VIRGINIA
DEPARTMENT OF MINES
OIL AND GAS DIVISION 3

Rotary
Spudder
Cable Tools
Storage **Dry** NOLL
Oil or Gas Well **Gas** (IND)

Quadrangle St. Albans (Garretts Bend)

WELL RECORD

Permit No. LIN- 1452

Company JEROME GOLDBERG
Address PO BOX 7 -- DUNBAR, W. VA. 25064
Farm Fred Alford Acres 1.37
Location (waters) Dry Fork
Well No. 15 Elev. 930.76'
District Duval County Lincoln
The surface of tract is owned in fee by Fred Alford
Garrets Bend, W.Va.
Address Garrets Bend, W.Va.
Mineral rights are owned by Fred Alford
Garrets Bend, W.Va.
Address Garrets Bend, W.Va.
Drilling commenced 5/3/70
Drilling completed 5/17/70
Date Shot From To

Casing and Tubing	Used in Drilling	Left in Well	Packers
Size			Kind of Packer
16			
13	92'	92' 100	sks. Common
10	2318'	2318'	Cemented to surface (650 sks.)
8 1/4			
6 3/4	5238'	1338' 150	sks set Common
5 3/16			
4 1/2			
3			Perf. top
2			Perf. bottom
Liners Used			Perf. top
			Perf. bottom

With
Open Flow /10ths Water in Inch
/10ths Merc. in Inch
Volume Cu. Ft.
Rock Pressure lbs. hrs.
Oil bbls., 1st 24 hrs.
WELL ACIDIZED (DETAILS) no
WELL FRACTURED (DETAILS) no

Attach copy of cementing record.
CASING CEMENTED 7" SIZE 1250 No. Ft. 5/12/70 Date
Amount of cement used (bags) 150 sks. Common
Name of Service Co. Halliburton TN 238022
COAL WAS ENCOUNTERED AT none FEET INCHES
FEET INCHES FEET INCHES
FEET INCHES FEET INCHES

RESULT AFTER TREATMENT (Initial open Flow or bbls.)
ROCK PRESSURE AFTER TREATMENT HOURS
Fresh Water 85' Feet Salt Water 450, 1510', 1550' Feet
Producing Sand Brown Shale Depth 3712'

Formation	Color	Hard or Soft	Top	Bottom	Oil, Gas or Water	Depth	Remarks
sand		S	0	60			
slate			60	160	water	85	
sand			160	250			
slate			250	450			
sand - <u>Self Sand</u>			250	520			
slate			520	720			
sand - <u>Self Sand</u>			720	940			
slate			940	953			
sand - <u>Self Sand</u>			953	1140			
slate			1140	1170			
slate & sands			1170	1421			
sand			1421	1650	water	1510-12	Maxon
slate			1650 ⁵⁰	1690 ⁵²			
lime - <u>Big Lime</u>			1690 ⁵²	1690			
shale - <u>P. Gales</u>			1690	1693			
lime - <u>Big Lime</u>			1693	1865			Big Lime
sand - <u>Injan</u>			1865	1910			
shale			1910	2410			
- O V E R -							

Formation	Color	Hard or Soft	Top	Bottom	Oil, Gas or Water	Depth Found	Remarks
sand			2410	2440			Berea
shale			2440	4470	gas	3712	Marcellus
shale	black		4470	4577			
Chert, lime			4577	4642			Oriskany
sand			4642	4655			
lime & Dolo.			4655	5255			Newburg
sand & lime			5255	5290			
lime			5290	5460			Keefer
sand			5460	5500			
shale			5500	5900			Clinton
sand			5900	5975			
shale & silt			5975	6030			
TOTAL DEPTH			6030				

P.I reports gas show in Tuscarora

(Note: PP - Wire line plug set above gel at 4600', Cal Seal plug from 4600' to 4585'. Pipe, 7" cut and removed at 3900'. Preparing to produce brown shale zone)

6030
~~2440~~
 3590 Expl. Footage

Date 5/18, 1970

APPROVED JEROME GOLDBERG, Owner

By *[Signature]* Consultant (Title)