

West Virginia Department of Environmental Protection
Office of Oil & Gas
WELL LOCATION FORM: GPS

API: 47- 043 - 1473⁹ WELL NO: No.5
FARM NAME: E.T. Spurlock
RESPONSIBLE PARTY NAME: East Resources, Inc.
COUNTY: Lincoln DISTRICT: Duval
QUADRANGLE: Garrett's Bend 7.5'
SURFACE OWNER: Sandra Rogers Broyles
ROYALTY OWNER: East Resources, Inc. et al.
UTM GPS NORTHING: 4,238,145
UTM GPS EASTING: 421,804 GPS ELEVATION: 234 m.

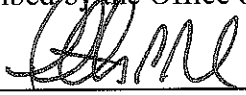
The Responsible Party named above has chosen to submit GPS coordinates in lieu of preparing a new well location plat for a plugging permit on the above well. The Office of Oil & Gas will not accept GPS coordinates that do not meet the following requirements:

1. Datum: NAD 1983, Zone:17 North, Coordinate Units: meters, Altitude: height above mean sea level (MSL) - ineters.
2. Accuracy to Datum - 3.05 meters
3. Data Collection Method:

Survey Grade GPS Post Processed Differential
Real-Time Differential
Mapping Grade GPS Post Processed Differential
Real-Time Differential

JUL 06 2012

I the undersigned, hereby certify this data is correct to the best of my knowledge and belief and shows all the information required by law and the regulations issued and prescribed by the Office of Oil and Gas.

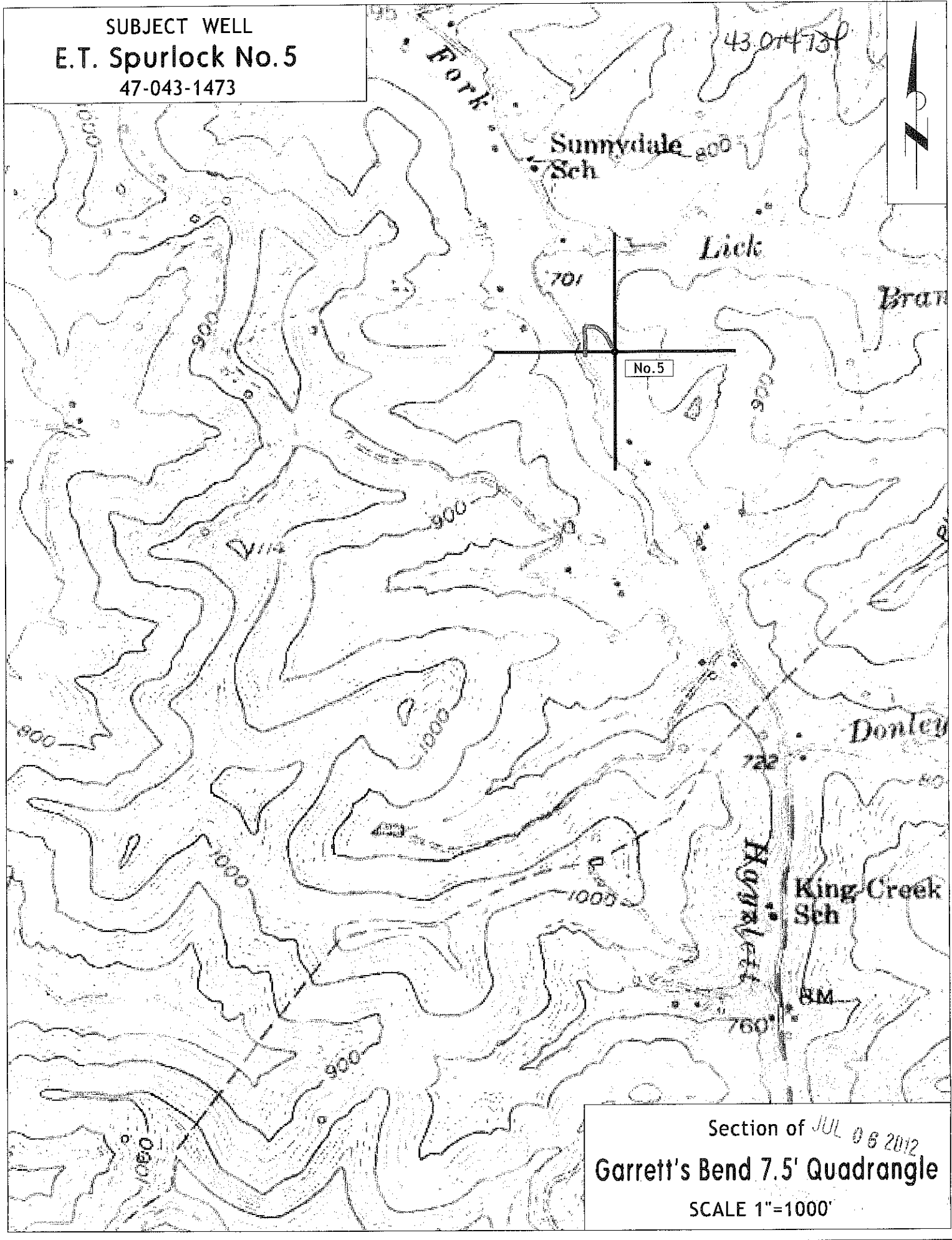

Timothy P. Roush
Signature

Professional Surveyor
Title

June 13, 2012
Date

SUBJECT WELL
E.T. Spurlock No. 5
47-043-1473

43.074738



Section of JUL 05 2012
Garrett's Bend 7.5' Quadrangle
SCALE 1"=1000'