

WW-7
5-02

West Virginia Department of Environmental Protection
Office of Oil & Gas
WELL LOCATION FORM: GPS

API: 47- 043 - 1546 WELL NO: No.3

FARM NAME: Roxie Pauley

RESPONSIBLE PARTY NAME: East Resources, Inc.

COUNTY: Lincoln DISTRICT: Duval

QUADRANGLE: Garrett's Bend 7.5'

SURFACE OWNER: Terry Mosteller et al.

ROYALTY OWNER: East Resources, Inc. et al.

UTM GPS NORTHING: 4,238,129

UTM GPS EASTING: 422,381 GPS ELEVATION: 259 m. 850'

The Responsible Party named above has chosen to submit GPS coordinates in lieu of preparing a new well location plat for a plugging permit on the above well. The Office of Oil & Gas will not accept GPS coordinates that do not meet the following requirements:

1. Datum: NAD 1983, Zone: 17 North, Coordinate Units: meters, Altitude: height above mean sea level (MSL) - meters.
2. Accuracy to Datum - 3.05 meters
3. Data Collection Method:

Survey Grade GPS Post Processed Differential
Real-Time Differential
Mapping Grade GPS Post Processed Differential
Real-Time Differential

RECEIVED
Office of Oil and Gas

OCT 15 2013

WV Department of
Environmental Protection

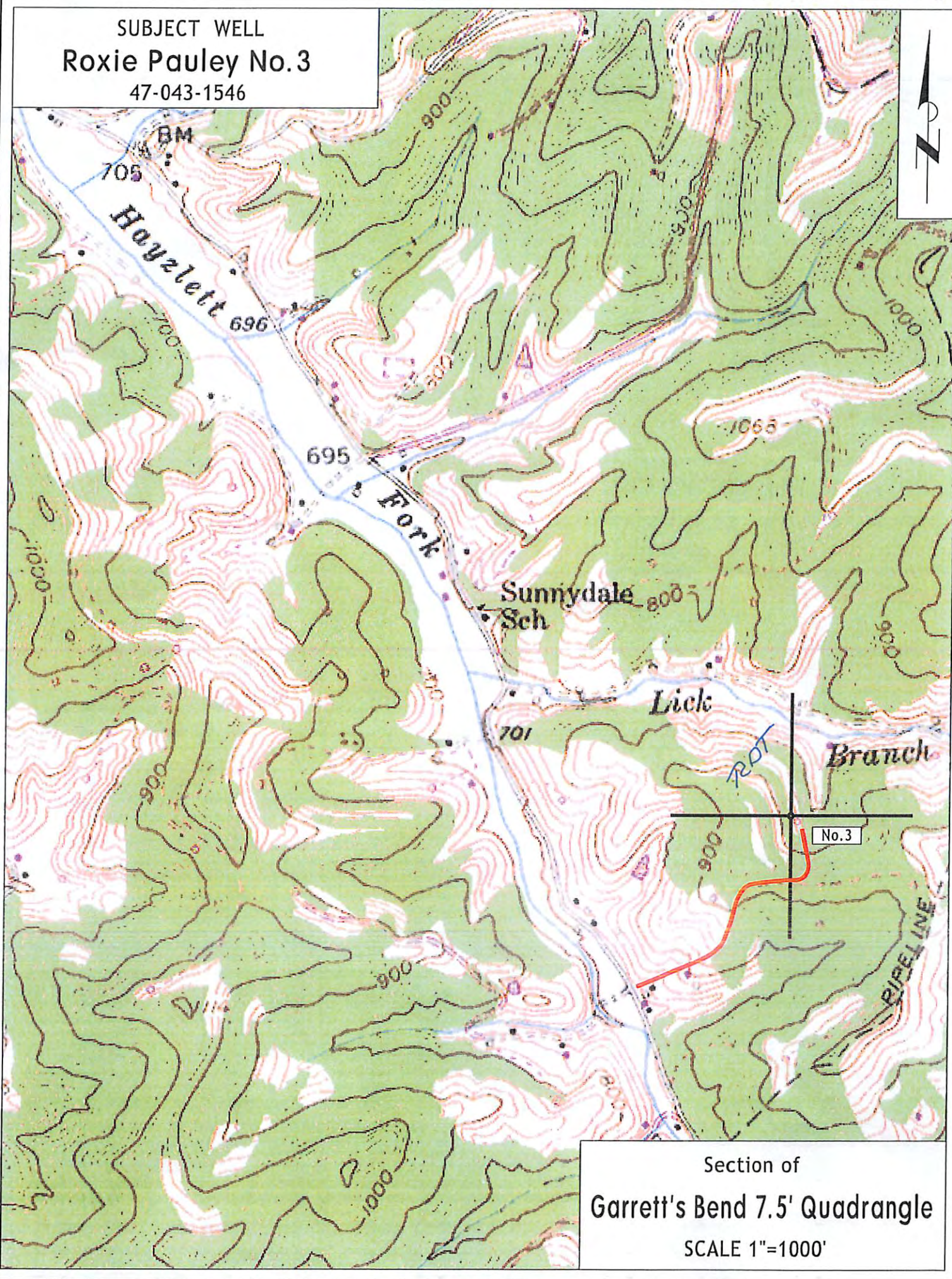
I the undersigned, hereby certify this data is correct to the best of my knowledge and belief and shows all the information required by law and the regulations issued and prescribed by the Office of Oil and Gas.

Timothy P. Roush
Signature Timothy P. Roush

Professional Surveyor
Title

June 13, 2012
Date

SUBJECT WELL
Roxie Pauley No.3
47-043-1546



Section of
Garrett's Bend 7.5' Quadrangle
SCALE 1"=1000'