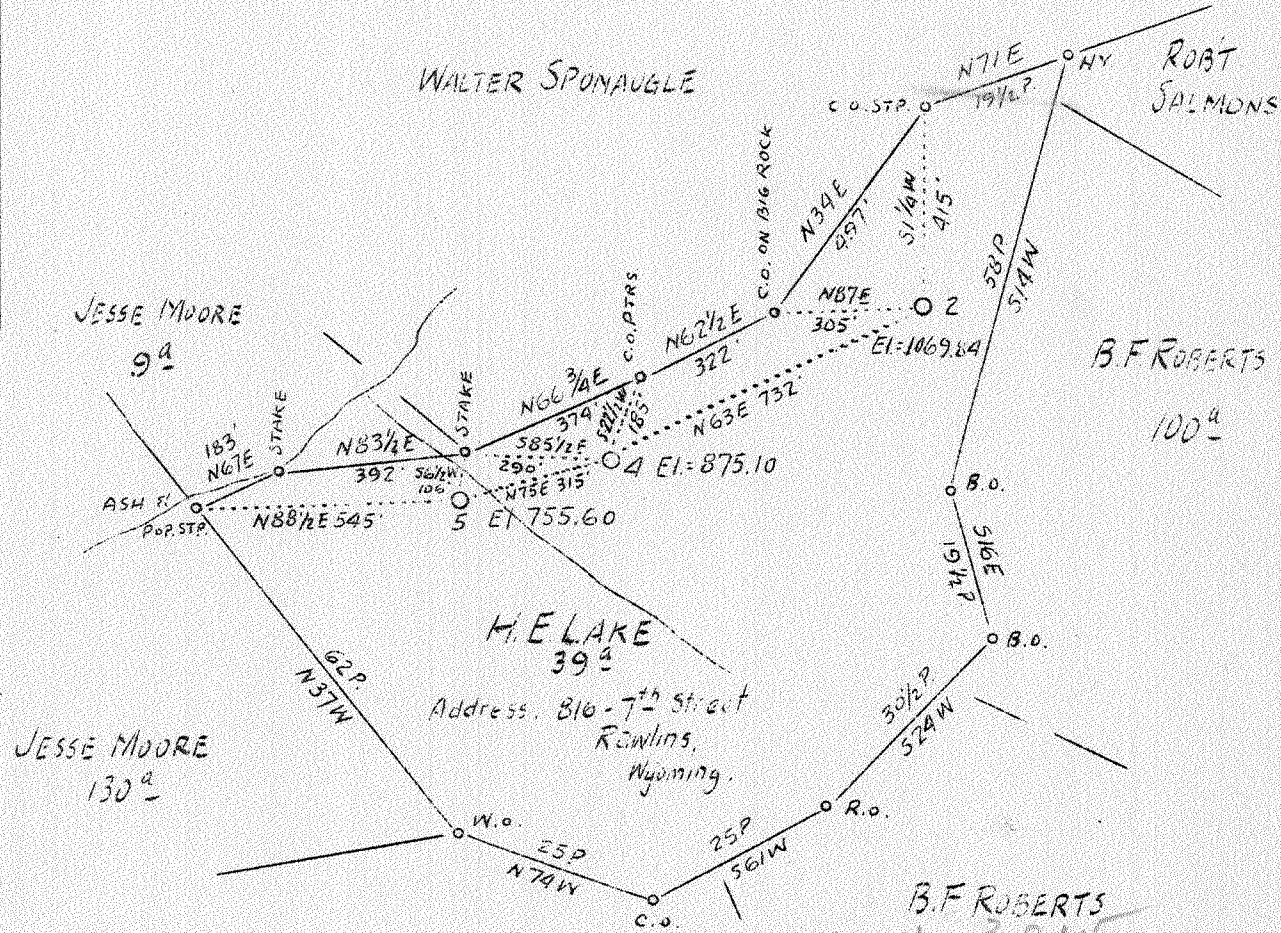


LATITUDE 38° 20'

LONGITUDE 82° 00'

+++



H. E. LAKE  
39<sup>a</sup>  
Address: 816-7<sup>th</sup> Street  
Rawlins,  
Wyoming.

No Coal

ROBERT SALMONS

AUG 22 1938

WELL TO BE ABANDUNED

#2	3.2W
#4	2.82W
#5	3.42W
	2.91W
	3.63W
	2.91W

Company South Penn Oil Co.  
 Address 411-7th Ave., Pittsburgh, Pa.  
 Farm H. E. Lake  
 Acres 38  
 Lease No. 75067  
 Well (Farm) No. 2 - 4 - 5  
 Quadrangle Milton  
 County Lincoln  
 District Carroll  
 Engineer E. C. Tabler  
 Eng. Reg. No. -  
 Date August 15, 1938  
 Scale 1" = 400'

STATE OF WEST VIRGINIA  
 Department of Lines  
 OIL & GAS DIVISION  
 Charleston

WELL LOCATION MAP  
 File No. LIN 156 A (2)  
 LIN 157 A (4)  
 LIN 158 A (5)

x Denotes location of well on U. S. Topographic Maps, scale 1 to 62,500, latitude and longitude lines being represented by border lines as shown.

- Denotes one inch spaces on border line of original tracing.

157A

Carroll District, Lincoln County, W. Va.

By South Penn Oil Co., 411 Seventh Ave., Pittsburgh, Pa.

On 38 acres, on Mud River.

Elevation, 875.10' L.

Surface owned by H. E. Lake, 816 Seventh St., Rawlins, Wyoming,  
and minerals by A. F. Morris et al., Hamlin, W. Va.

Drilling commenced Oct. 7, 1919; completed, Oct. 24, 1919.

Shot Oct. 24, 1919.

Oil, 10 bbls., 1st 24 hrs.

8½" casing, 20'; 6⅝", 720'; all left in.

Oil well. Abandonment reported to Dept. of Mines Aug. 17, 1938.

Record to RCT from Mrs. Griffith Sept. 22, 1938.

	Top.	Bottom.
Top Sand	961	...
(top oil pay, 972'; bottom oil pay, 983')		
Bottom Sand	...	984
Total depth		988

OG-10  
 WEST VIRGINIA DEPARTMENT OF MINES  
 OIL AND GAS DIVISION  
**WELL RECORD**

492

Permit No. 157-A Oil or Gas Well OIL  
 (Kind)

Company SOUTH PENN OIL COMPANY  
 Address 411 Seventh Ave., Pittsburgh, Pa.  
 Farm H. E. Lake Acres 38  
 Location (waters) Mud River  
 Well No. 4 Elev. 875.10'  
 District Carroll County Lincoln  
 The surface of tract is owned in fee by H. E. Lake  
816 - 7th St., Address Rawlins, Wyoming  
 Mineral rights are owned by A. E. Morris et al  
 Address Hemlin, W. Va.  
 Drilling commenced October 7, 1919  
 Drilling completed October 24, 1919  
 Date shot 10-24-19 Depth of shot -  
 Open Flow /10ths Water in - Inch  
 /10ths Merc. in - Inch  
 Volume - Cu. Ft.  
 Rock Pressure - lbs. - hrs.  
 Oil 10 bbls., 1st 24 hrs.  
 Fresh water - feet - feet  
 Salt water - feet - feet

Casing and Tubing	Used in Drilling	Left in Well	Packers
Size			
16			Kind of Packer <u>-</u>
13			<u>-</u>
10			Size of <u>-</u>
8 1/4	<u>20</u>		<u>-</u>
6 5/8	<u>720</u>		Depth set <u>-</u>
5 3/16			<u>-</u>
3			Perf. top <u>-</u>
2			Perf. bottom <u>-</u>
Liners Used			Perf. top <u>-</u>
			Perf. bottom <u>-</u>

CASING CEMENTED - SIZE - No. FT. - Date -  
 COAL WAS ENCOUNTERED AT - FEET - INCHES  
- FEET 0 INCHES - FEET - INCHES  
- FEET - INCHES - FEET - INCHES

Formation	Color	Hard or Soft	Top	Bottom	Oil Gas or Water	Depth Found	Remarks
Top Sand				961			
					Top Oil Pay	972	
					Bottom Oil Pay	983	
Bottom Sand				984			
Total Depth				988			

