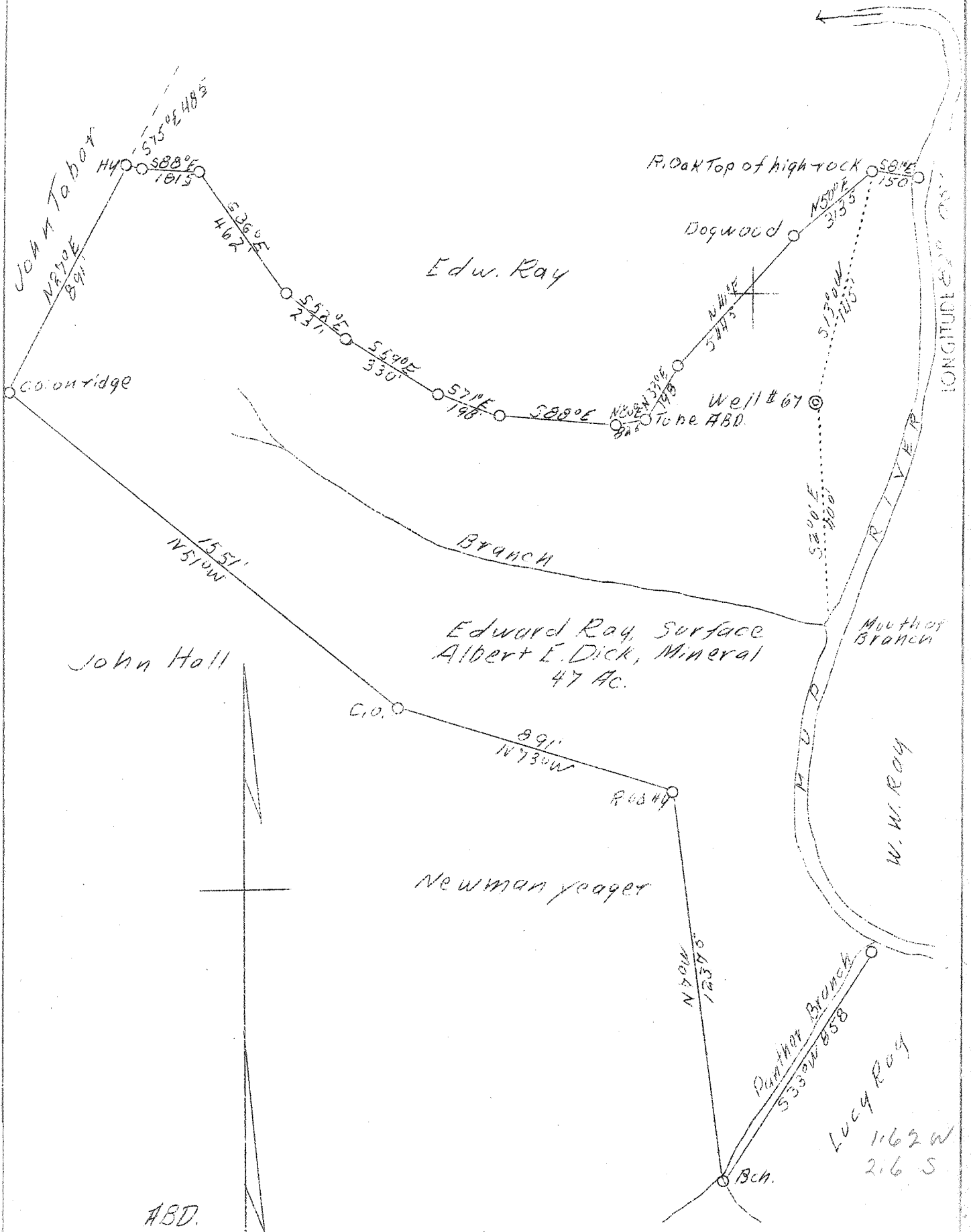


LATITUDE 38° 15'



Company Kanawha Gas & Utilities Co.
 Address Hamlin, W. Va.
 Farm Edward Ray
 Tract 1
 Acres 47
 Well (Farm) No. One
 Serial No. 67
 Elevation (Sp) 675
 Quadrangle Midkiff *nc*
 County Lincoln
 District Carroll
 Engineer G. C. Ewing
 Eng. Reg. No. 309
 Date Sept. 14, 1938
 Scale 1" - 400'

STATE OF WEST VIRGINIA
 Department of Mines
 OIL & GAS DIVISION
 Charleston

WELL LOCATION MAP

File No. LIN-165-A

x Denotes location of well on U. S. Topographic Maps, scale 1 to 62,500, latitude and longitude lines being represented by border lines as shown.

- Denotes one inch spaces on border line of original tracing.