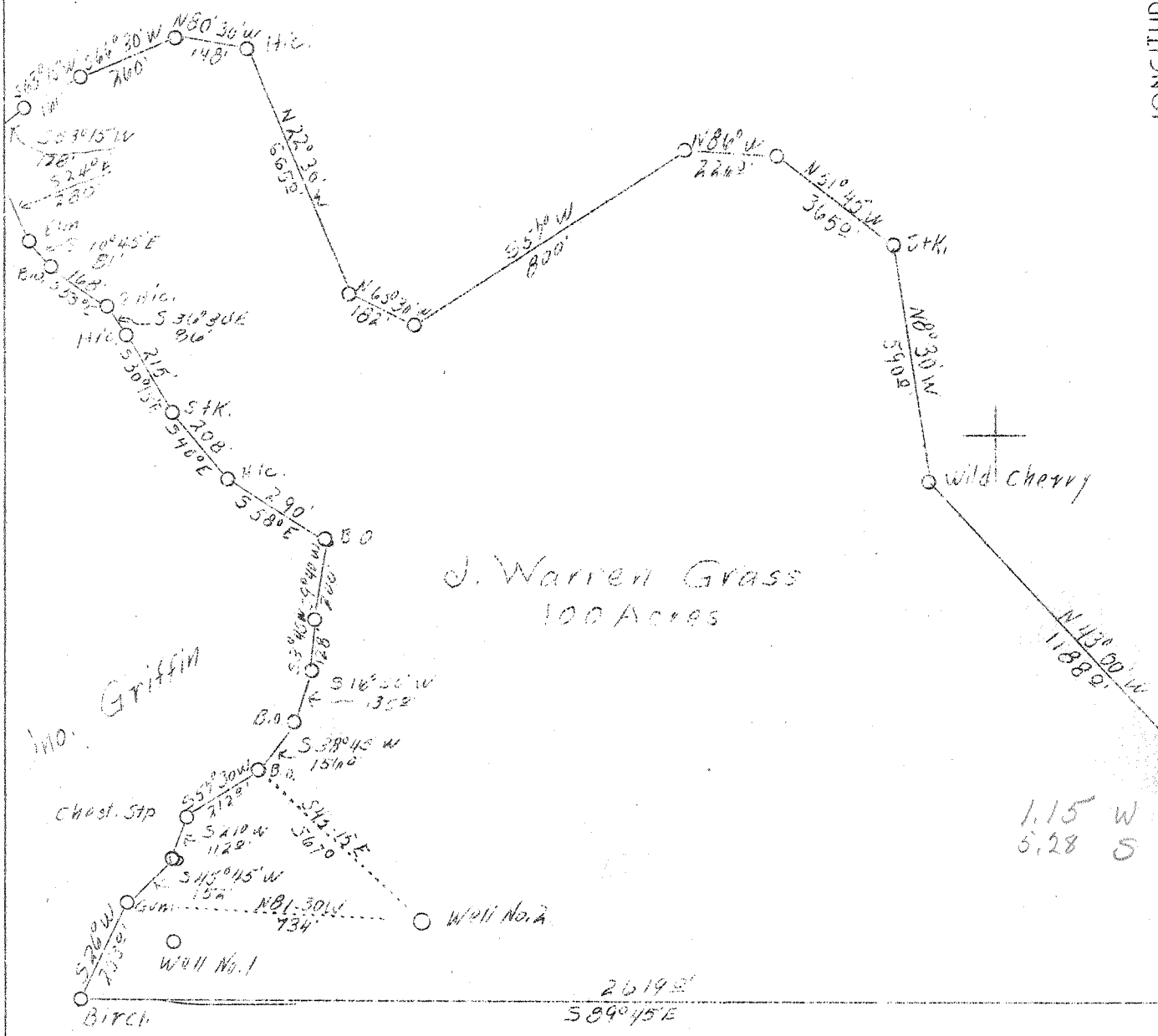


LATITUDE 38° 25'

LONGITUDE 82° 05'

Warren Grass



J. Warren Grass
100 Acres

David Potter

ABD.

Company	Transylvania Petroleum Co.
Address	Huntington, W. Va.
Farm	J. Warren Grass
Acres	100
Well (Farm) No.	Two
Elevation (SP)	810
Quadrangle	Milton
County	Lincoln
District	Carroll
Engineer	S. V. Haworth
Eng. Reg. No.	224
Date	-
Scale	1" = 400'

STATE OF WEST VIRGINIA
 Department of Mines
 OIL & GAS DIVISION
 Charleston

WELL LOCATION MAP

File No. Lin-182-A

x Denotes location of well on U. S. Topographic Maps, scale 1 to 62,500, latitude and longitude lines being represented by border lines as shown.

- Denotes one inch spaces on border line of original tracing.