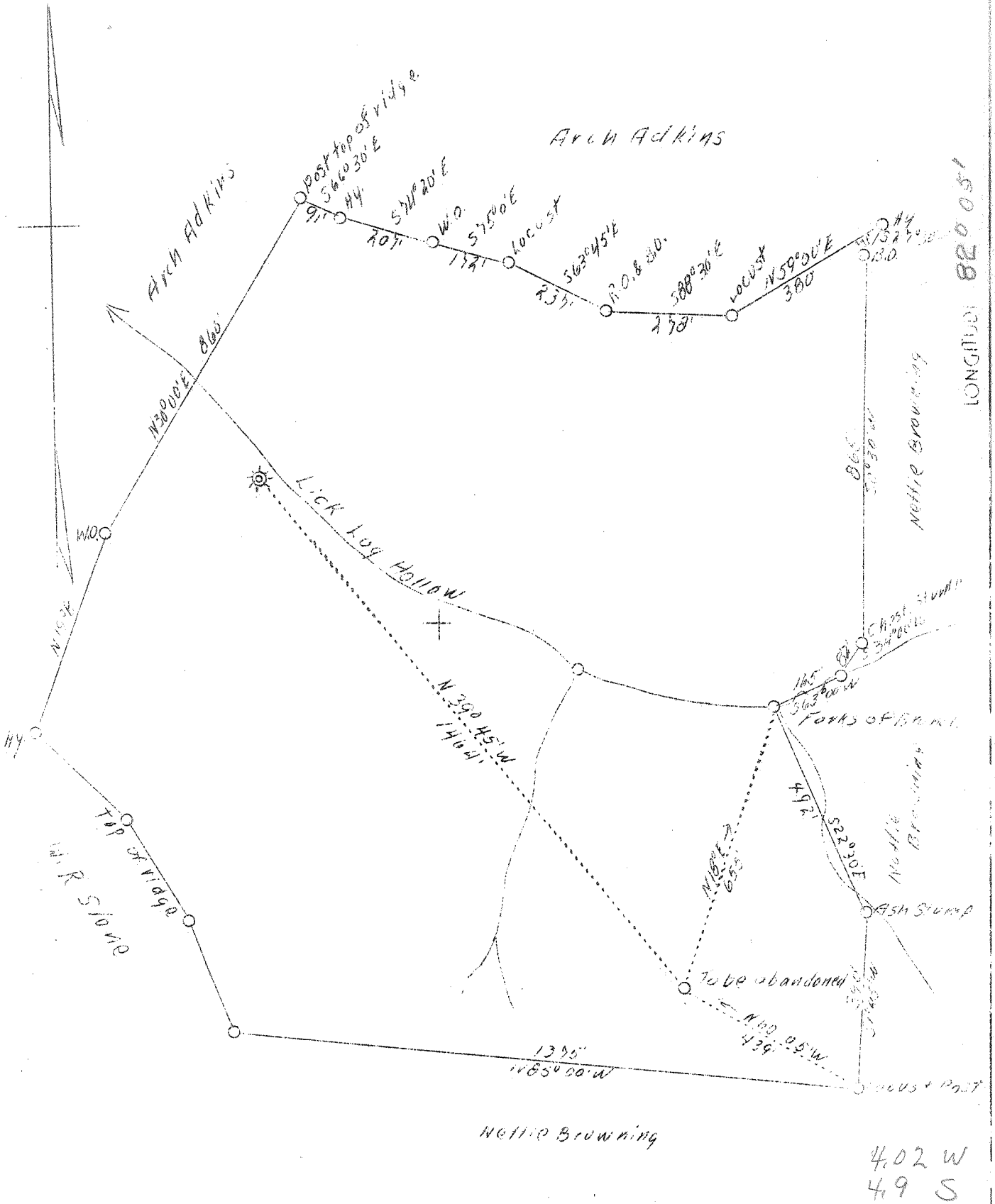


LATITUDE 38° 20'



ABD

Company	David Fox
Address	Huntington, W. Va.
Farm	Elisha Adkins
Tract	One
Acres	60
Well (Farm) No.	One
Elevation (SP)	750
Quadrangle	Milton S.C.
County	Lincoln
District	Sheridan
Engineer	G. C. Ewing
Eng. Reg. No.	309
Date	Nov. 5, 1938
Scale	1" = 300'

STATE OF WEST VIRGINIA  
 Department of Mines  
 OIL & GAS DIVISION  
 Charleston

WELL LOCATION MAP  
 File No. LIN-183-4

x Denotes location of well on U. S. Topographic Maps, scale 1 to 62,500, latitude and longitude lines being represented by border lines as shown.

- Denotes one inch spaces on border line of original tracing.