

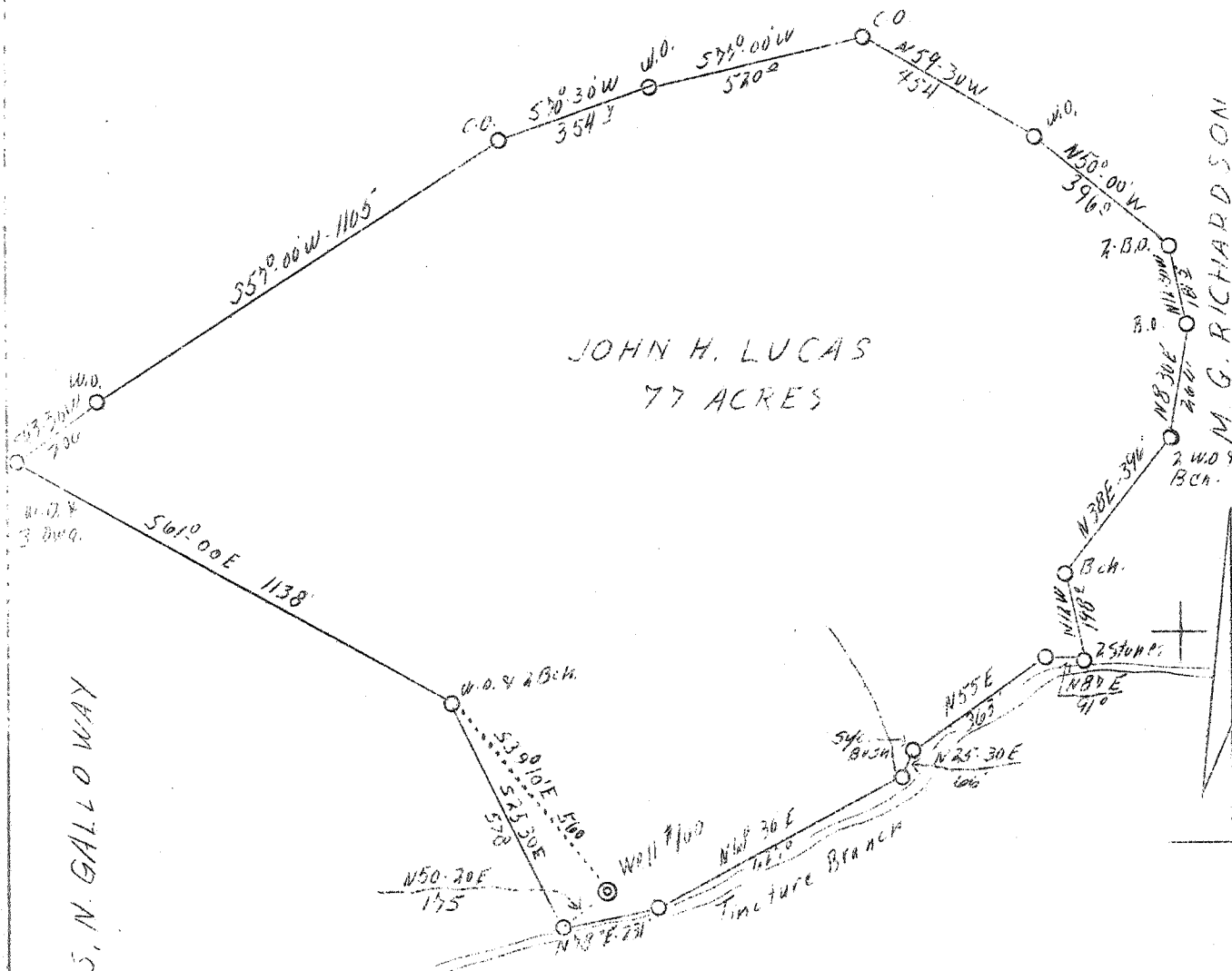
LATITUDE 38° 20'

MAGGIE JAYNES

JOHN H. LUCAS
77 ACRES

M. G. RICHARDSON

LONGITUDE 82° 05'



M.G. RICHARDSON ET AL.

W - 162
S - 5.45

ABD.

Company	Kanawha Gas & Utilities Co.	STATE OF WEST VIRGINIA
Address	Hamlin, W. Va.	Department of Mines
Farm	John H. Lucas	OIL & GAS DIVISION
Tract	One	Charleston
Acres	77	
Well (Farm) No.	One	WELL LOCATION MAP
Serial No.	100	File No. <u>L 111-185-A</u>
Elevation (SP)	695	
Quadrangle	Milton	
County	Lincoln	
District	Carroll	
Engineer	S. V. Haworth	
Eng. Reg. No.	224	
Date	Nov. 22, 1938	
Scale	1" = 400'	

x Denotes location of well on U. S. Topographic Maps, scale 1 to 62,500, latitude and longitude lines being represented by border lines as shown.
- Denotes one inch spaces on border line of original tracing.