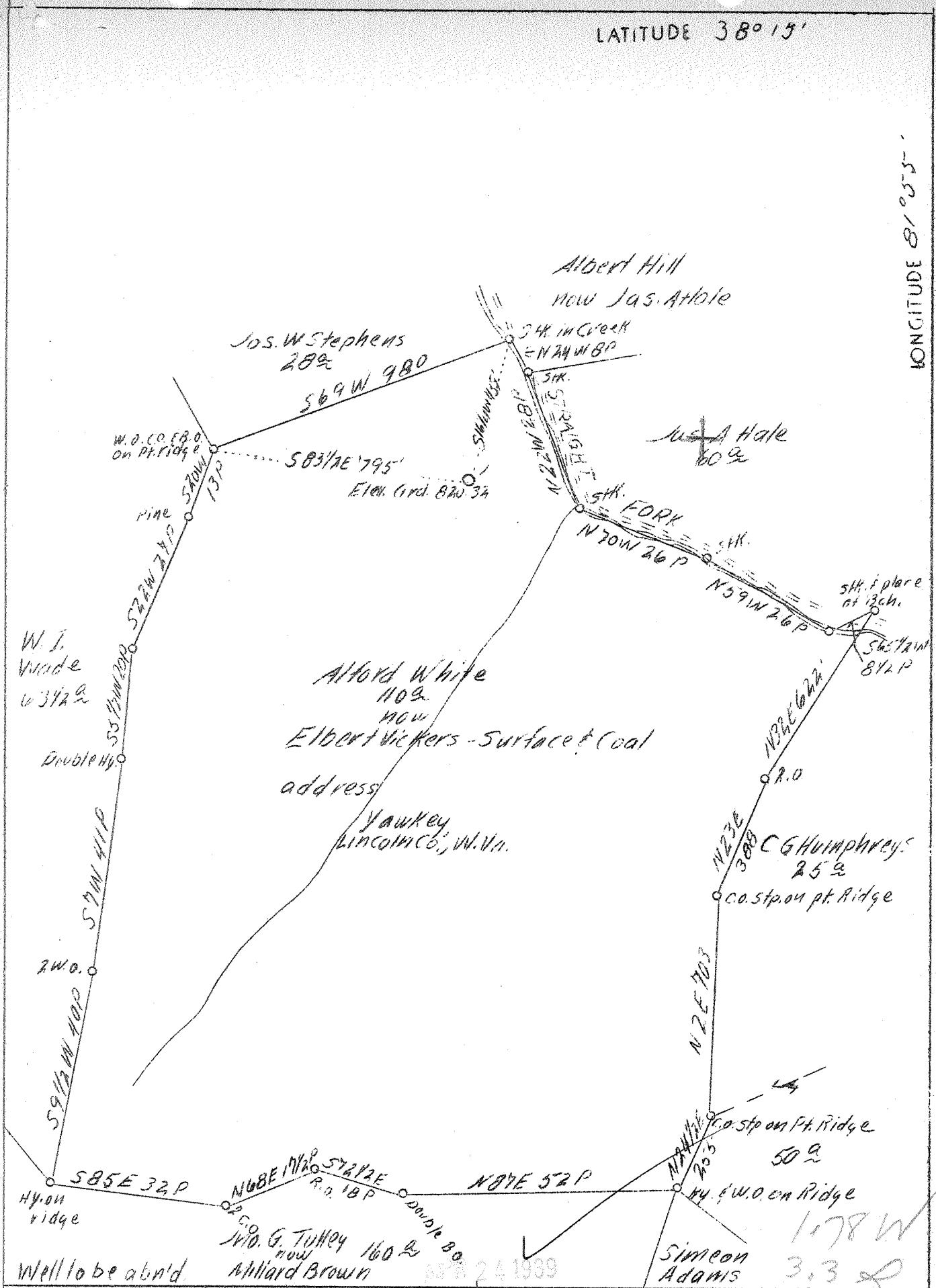


LATITUDE 38° 15'

LONGITUDE 81° 05'



Well to be ab'd

Company South Penn Oil Co.
 Address 411 & 7 Ave. Pittsburgh, Pa.
 Farm Alford White
 Acres 110
 Lease No. 71068
 Well (Farm) N. 1
 Quadrangle Madison
 County Lincoln
 District 5 Duval
 Eng. E.C. Tabler
 Date 3/21/39
 Scale 1" = 400'

STATE OF WEST VIRGINIA
 Department of Mines
 OIL AND GAS DIVISION
 Charleston

WELL LOCATION MAP

File No. LIN-191-A

x Denotes location of well on U.S. Topographic Maps, scale 1 to 62,500, latitude and longitude lines being represented by border lines as shown.

- Denotes one inch spaces on border line of original tracing.

191A

Duval District, Lincoln County, W. Va.
Big Creek Development Co.
1/2 mi. East of Amy.

	Top.	Bottom.	Thickness.
Salt Sand	855	- 1525	670
Slate	1525	- 1532	7
Little Lime	1532	- 1555	23
Pencil slate	1555	- 1560	5
Big Lime	1560	- 1747	187
Big Injun Sand	1747	- 1817	70
Slate and shells	1817	- 2275	458
Berea Sand	2275	- 2290	15

WEST VIRGINIA DEPARTMENT OF MINES
OIL AND GAS DIVISION

566

WELL RECORD

Permit No. A3 191-A

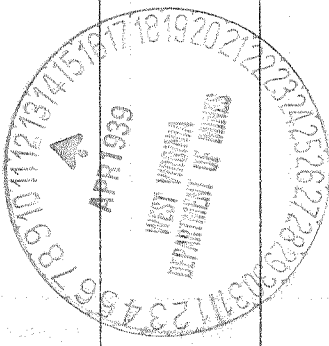
Oil or Gas Well OIL
(Kind)

Company SOUTH PENN OIL COMPANY
 Address 411 Seventh Ave., Pittsburgh, Pa.
 Farm Alford White Acres 110
 Location (waters) Streight Fork
 Well No. 1 Elev. 820.32'
 District Duval County Lincoln
 The surface of tract is owned in fee by Elbert Vickers
 Address Yawkey, W. Va.
 Mineral rights are owned by Alford White
 Address Milton, W. Va.
 Drilling commenced August 5, 1909
 Drilling completed Aug. 18, 1909
 Date shot Aug. 18, 1909 Depth of shot ---
 Open Flow --- /10ths Water in --- Inch
--- /10ths Merc. in --- Inch
 Volume --- Cu. Ft.
 Rock Pressure --- lbs. --- hrs.
 Oil 15 bbls., 1st 24 hrs.
 Fresh water --- feet --- feet
 Salt water --- feet --- feet

Casing and Tubing	Used in Drilling	Left in Well	Packers
Size			Kind of Packer
16			
13			
10			Size of
8 1/4	405		
6 5/8	1570		Depth set
5 3/16			
3			Perf. top
2			Perf. bottom
Liners Used			Perf. top
			Perf. bottom

CASING CEMENTED --- SIZE --- No. FT. --- Date ---
 COAL WAS ENCOUNTERED AT --- FEET --- INCHES
--- FEET --- INCHES --- FEET --- INCHES
--- FEET --- INCHES --- FEET --- INCHES

Formation	Color	Hard or Soft	Top	Bottom	Oil Gas or Water	Depth Found	Remarks
Salt Sand			855	1525			
Slate			1525	1532			
Little Lime			1532	1555			
Pencil Slate			1555	1560			
Big Lime			1560	1747			
Injun Sand			1747	1817			
Slate & Shells			1817	2275			
Berea Sand			2275	2290			
Total Depth				2293			



MAY 2 1939

