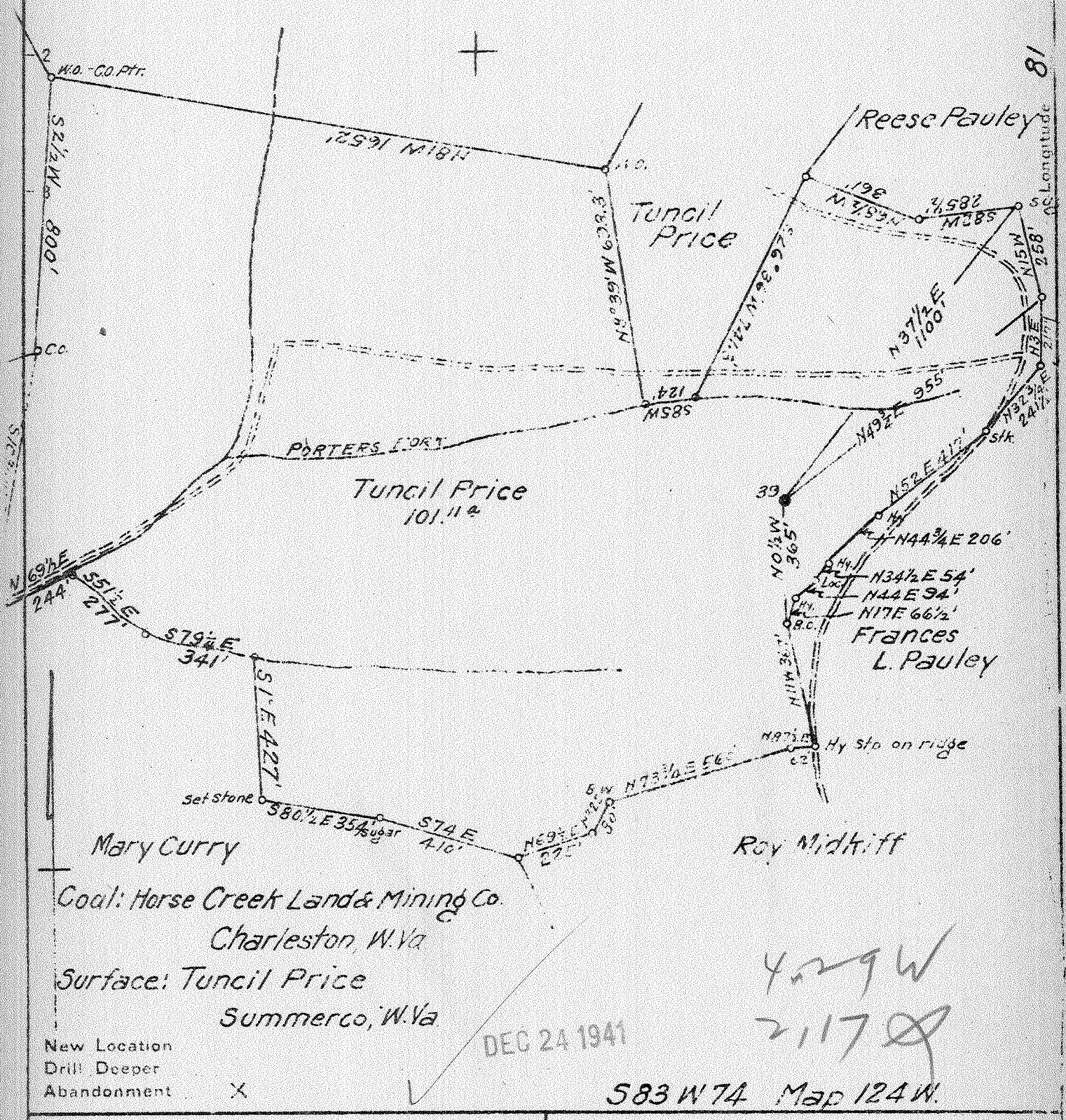


Latitude 38 15

Longitude 81 50

Geo. Shirley



Coal: Horse Creek Land & Mining Co.  
 Charleston, W. Va  
 Surface: Tuncil Price  
 Summerco, W. Va

DEC 24 1941

4229 W  
 2117

583 W 74 Map 124 W.

- New Location
- Drill Deeper
- Abandonment

Company South Penn Natural Gas Co.  
 Address Parkersburg, W. Va.  
 Farm Horse Creek Tract.  
 Tract \_\_\_\_\_ Acres 11327 Lease No. 57128  
 Well (Farm) No. 39 Serial No. \_\_\_\_\_  
 Elevation (Spirit Level) 1106.62  
 Quadrangle Madison  
 County Lincoln Dist. Duval  
 Engineer E.C. Tabler  
 Engineer's Registration No. \_\_\_\_\_  
 File No. \_\_\_\_\_ Drawing No. \_\_\_\_\_  
 Date Nov 14, 1941 Scale 1" = 400'

STATE OF WEST VIRGINIA  
 DEPARTMENT OF MINES  
 OIL AND GAS DIVISION  
 CHARLESTON

WELL LOCATION MAP  
 FILE NO. LIN - 277 A

- + Denotes location of well on United States Topographic Maps, scale 1 to 62 500, latitude and longitude lines being represented by border lines as shown.
- Denotes one inch spaces on border line of original tracing.

STATE OF WEST VIRGINIA  
DEPARTMENT OF MINES  
OIL AND GAS DIVISION

580

WELL RECORD

Permit No. 372A

Oil or Gas Well Oil  
(KIND)

Company South Penn Natural Gas Company  
Address Union Trust Bldg., Parkersburg, W. Va.  
Farm Horse Creek Tract Acres 11327  
Location (waters) ---  
Well No. 39 Elev. 1106.62  
District Duval County Lincoln  
The surface of tract is owned in fee by Tuncil Price  
Address Summerco, W. Va.  
Mineral rights are owned by Horse Creek Land & Mining Co., Box 213, Address Charleston, W. Va.  
Drilling commenced December 31, 1915  
Drilling completed February 15, 1916  
Date shot Mar. 1, 1916 <sup>60 ft.</sup> Depth of shot Berea  
Open Flow /10ths Water in --- Inch  
/10ths Merc. in --- Inch  
Volume --- Cu. Ft.  
Rock Pressure --- lbs. --- hrs.  
Oil 20 bbls., 1st 24 hrs.  
Fresh water --- feet --- feet  
Salt water 1184 feet 1225 feet

Casing and Tubing	Used in Drilling	Left in Well	Packers
Size			
16			Kind of Packer
13			
10			Size of
8 1/4	697 (pulled)		
6 5/8	1902		Depth set
5 3/16			
3			Perf. top
2			Perf. bottom
Liners Used			Perf. top
			Perf. bottom

CASING CEMENTED --- SIZE --- No. Ft. --- Date ---  
COAL WAS ENCOUNTERED AT 628 FEET 36 INCHES  
--- FEET --- INCHES --- FEET --- INCHES  
--- FEET --- INCHES --- FEET --- INCHES

Formation	Color	Hard or Soft	Top	Bottom	Oil, Gas or Water	Depth Found	Remarks
Clay				14			
Sand			14	60			
Slate			60	100			
Lime			100	125			
Slate			125	175			
Lime			175	200			
Slate			200	300			
Lime			300	320			
Slate			320	335			
Sand			335	500			
Slate			500	540			
Sand			540	570			
Slate			570	590			
Sand			590	628			
Coal			628	631			
Slate			631	690			
Sand			690	730			
Slate & Shells			730	830			
Sand			830	850			
Slate & Shells			850	1025			
Sand			1025	1070			
Slate			1070	1140			
Salt Sand			1140	1725			
Slate			1725	1730	Water	1184	
Lime			1730	1740	Water	1225	Hole full
Red Rock & Slate			1740	1819			
Maxon Sand			1819	1835			
Little Lime			1835	1865			
Pencil Cave			1865	1872			
Big Lime			1872	2071			
Big Injun			2071	2136			
Slate & Shells			2136	2525			
Brown Shale			2525	2548			
Berea Sand			2548	2569			
					Oil	2552	
Total Depth				2572			

