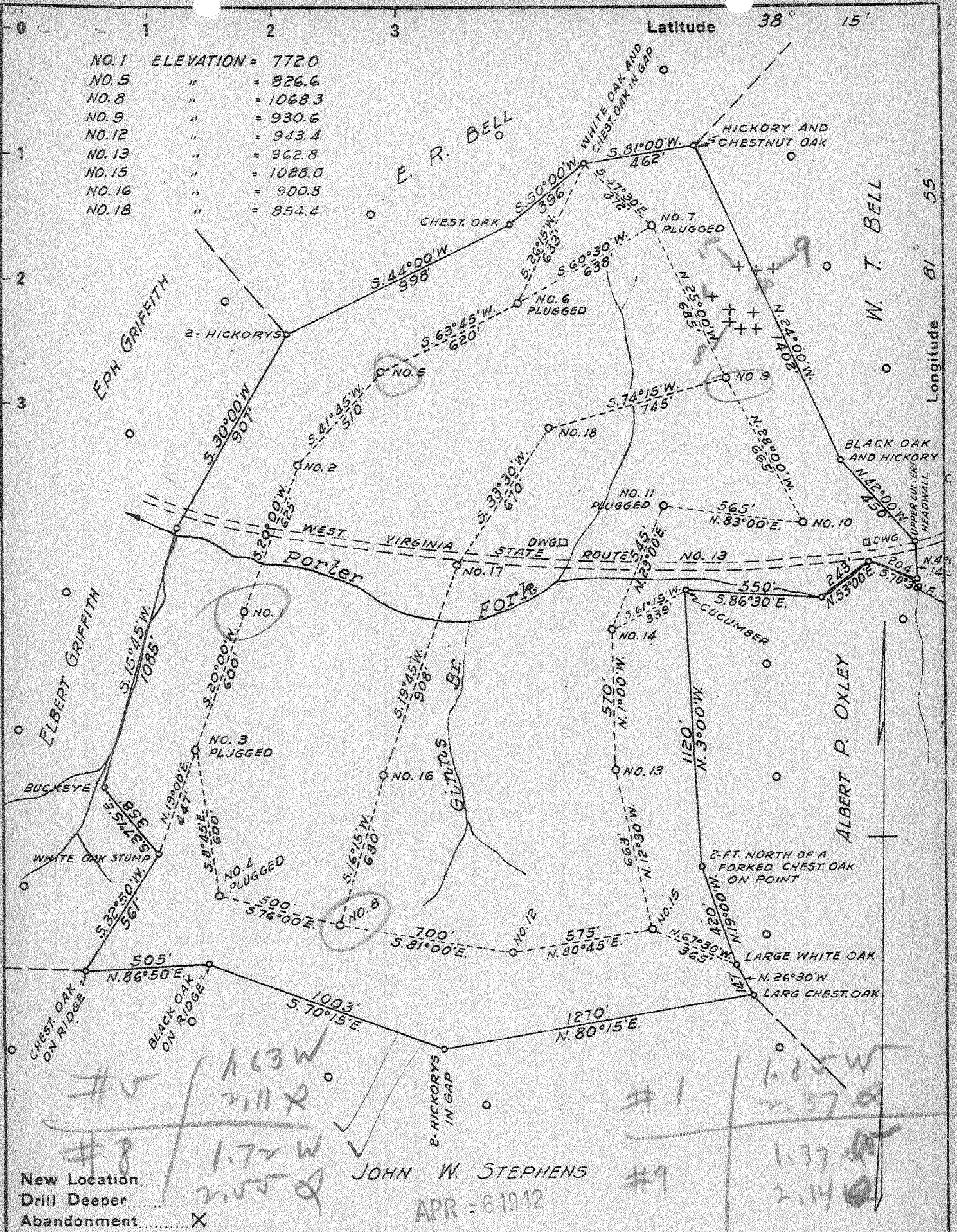


NO. 1	ELEVATION =	772.0
NO. 5	"	= 826.6
NO. 8	"	= 1068.3
NO. 9	"	= 930.6
NO. 12	"	= 943.4
NO. 13	"	= 962.8
NO. 15	"	= 1088.0
NO. 16	"	= 900.8
NO. 18	"	= 854.4



New Location  
 Drill Deeper  
 Abandonment X

JOHN W. STEPHENS  
 APR - 6 1942

Company FRICK-REID SUPPLY CORPORATION  
 Address SANDYVILLE, WEST VA.  
 Farm T.A. & M.A. GRIFFITH  
 Tract. 1 Acres 160 Lease No. 1-5-8-9-12  
 Well (Farm) No. 13-15-16-18 Serial No. \_\_\_\_\_  
 Elevation (Spirit Level) \_\_\_\_\_  
 Quadrangle MADISON  
 County LINCOLN District DUVAL  
 Engineer E. C. Ewing  
 Engineer's Registration No. 309  
 File No. \_\_\_\_\_ Drawing No. \_\_\_\_\_  
 Date 2-16-42 Scale 1"=500'

STATE OF WEST VIRGINIA  
 DEPARTMENT OF MINES  
 OIL AND GAS DIVISION  
 CHARLESTON

WELL LOCATION MAP

FILE NO. LIN-283-A WELL #1  
LIN-284-A WELL #9

+ Denotes location of well on United States Topographic Maps, scale 1 to 62,500, latitude and longitude lines being represented by border lines as shown. LIN-294-A - # 5  
LIN-295-A - # 8  
 - Denotes one inch spaces on border line of original tracing.

Duval District, Lincoln County, W. Va.

295A

By United Fuel Gas Co.

Elevation, 1035'.

Drilling commenced Sept. 1, 1909, and completed Oct. 16, 1909.

Contractor, United Fuel Drilling Co.

Drillers: C. E. Via and H. D. Longfellow.

Shot Oct. 15, 1909, with 90 qts.

Examined and approved by E. B. South, Foreman.

	Top.	Bottom.	Thickness.
Salt Sand	1160	- 1800	640
Slate	1800	- 1810	10
Little Lime	1810	- 1835	25
Pencil Cave	1835	- 1840	5
Big Lime	1840	- 2015	175
Big Injun Sand	2015	- 2100	85
Slate and shells	2100	- 2526	426
Berea Sand (oil)	2526	- 2545	19
Total depth (2' pocket)		2547	

STATE OF WEST VIRGINIA  
DEPARTMENT OF MINES  
OIL AND GAS DIVISION

589

WELL RECORD

Permit No. 2915-A

Oil or Gas Well Oil  
(KIND)

Company Frick-Reid Supply Corporation  
 Address Drawer 2481, Tulsa Okla.  
 Farm T.A.&M.A.Griffith Acres 160  
 Location (waters) Porter's Fork, Mud River  
 Well No. Eight Elev. 1068  
 District Duval County Lincoln  
 The surface of tract is owned in fee by J. W. Stickler  
 Address Yawkey, W. Va.  
 Mineral rights are owned by MRS M.A.Hill and T. A. Griffith Heirs  
 Address Madison, W. Va.  
 Drilling commenced Sept. 1, 1909  
 Drilling completed Oct. 16, 1909  
 Date Shot \_\_\_\_\_ From \_\_\_\_\_ To \_\_\_\_\_  
 With \_\_\_\_\_  
 Open Flow \_\_\_\_\_ /10ths Water in \_\_\_\_\_ Inch  
 \_\_\_\_\_ /10ths Merc. in \_\_\_\_\_ Inch  
 Volume \_\_\_\_\_ Cu. Ft.  
 Rock Pressure \_\_\_\_\_ lbs. \_\_\_\_\_ hrs.  
 Oil \_\_\_\_\_ bbls., 1st 24 hrs.  
 Fresh water \_\_\_\_\_ feet \_\_\_\_\_ feet  
 Salt water \_\_\_\_\_ feet \_\_\_\_\_ feet

Casing and Tubing	Used in Drilling	Left in Well	Packers
Size			Kind of Packer
16			
13			
10 Wood	16'	16'	Size of
8 1/4	510'		
6 5/8	1852'	1852'	Depth set
5 3/16			
3		2547'	Perf. top
2			Perf. bottom
Liners Used			Perf. top
			Perf. bottom

CASING CEMENTED \_\_\_\_\_ SIZE \_\_\_\_\_ No. Ft. \_\_\_\_\_ Date \_\_\_\_\_  
 COAL WAS ENCOUNTERED AT \_\_\_\_\_ FEET \_\_\_\_\_ INCHES  
 \_\_\_\_\_ FEET \_\_\_\_\_ INCHES \_\_\_\_\_ FEET \_\_\_\_\_ INCHES  
 \_\_\_\_\_ FEET \_\_\_\_\_ INCHES \_\_\_\_\_ FEET \_\_\_\_\_ INCHES

Formation	Color	Hard or Soft	Top	Bottom	Oil, Gas or Water	Depth Found	Remarks
Sand & Slate			0'	85'			
Sand			85'	180'			
Slate			180'	250'			
Sand			250'	310'			
Slate			310'	385'			
Lime			385'	435'			
Sand			435'	500'			
Slate			500'	590'			
Sand			590'	665'			
Slate			665'	760'			
Lime			760'	815'			
Sand			815'	865'			
Slate			865'	955'			
Sand			955'	1040'			
Slate			1040'	1160'			
Salt Sand			1160'	1800'			
Slate			1800'	1810'			
Little lime			1810'	1835'			
Pencil cave			1835'	1840'			
Big lime			1840'	2015'			
Big Injun			2015'	2100'			
Slate & shells			2100'	2526'			
Berea Sand			2526'	2545'			
Total Depth				2547'			

