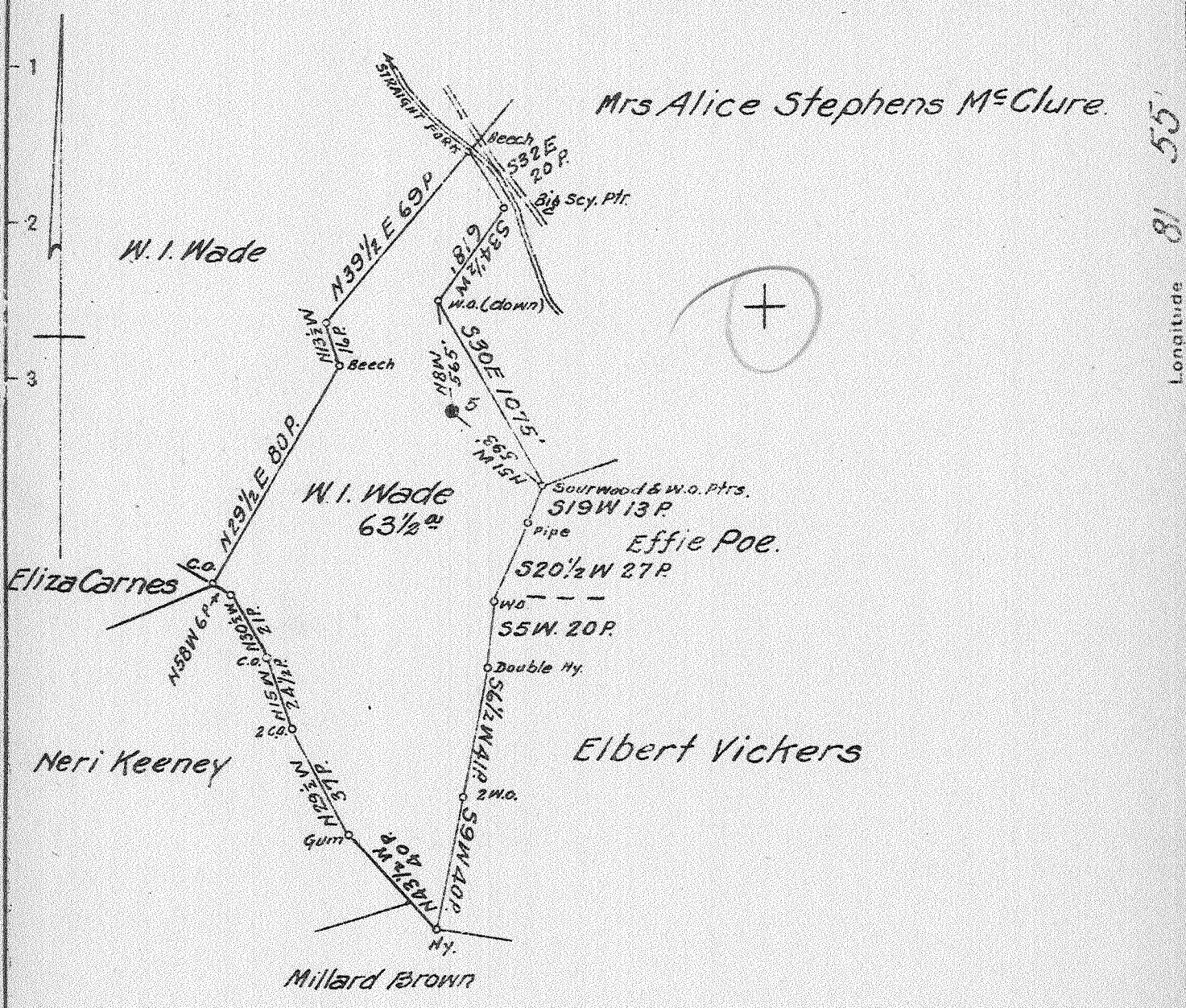


Latitude 38 15'

Longitude 81 55'



No Commercial Coal
 Surface: W. I. Wade
 Yawkey, W. Va.

2.75 W
 2.71 W

JUL 13 1942

New Location
 Drill Deeper
 Abandonment

583-84 W 76-77 Map 135 W

Company South Penn Natural Gas Co.
 Address Parkersburg, W. Va.
 Farm W. I. Wade
 Tract _____ Acres 64 Lease No. 71106
 Well (Farm) No. 5 Serial No. _____
 Elevation (Spirit Level) 974.08
 Quadrangle Madison
 County Lincoln District Duval
 Engineer E.C. Tabler
 Engineer's Registration No. _____
 File No. _____ Drawing No. _____
 Date May 19, 1942 Scale 1" = 800'

STATE OF WEST VIRGINIA
 DEPARTMENT OF MINES
 OIL AND GAS DIVISION
 CHARLESTON

WELL LOCATION MAP
 FILE NO. LIN 324 A

+ Denotes location of well on United States Topographic Maps, scale 1 to 62,500, latitude and longitude lines being represented by border lines as shown
 - Denotes one inch spaces on border line of original tracing.

W. I. WADE NO. 5 - SOUTH PENN NAT. GAS CO. - LIN-324-A

STATE OF WEST VIRGINIA
DEPARTMENT OF MINES
OIL AND GAS DIVISION

637
OIL

WELL RECORD

Permit No. 3277

Oil or Gas Well OIL
(KIND)

Company South Penn Natural Gas Company
Address Union Trust Bldg. Parkersburg, W. Va.
Farm W. I. Wade Acres 64
Location (waters) Straight Fork
Well No. 5 Elev. 974.08
District Duval County Lincoln
The surface of tract is owned in fee by W. I. Wade
Address Yawkey, W. Va.
Mineral rights are owned by W. I. Wade
Address Yawkey, W. Va.
Drilling commenced Oct. 23, 1915
Drilling completed Nov. 29, 1915
Date Shot 12-6-15 From -- To --
With 80 qts.
Open Flow /10ths Water in --- Inch
/10ths Merc. in --- Inch
Volume --- Cu. Ft.
Rock Pressure --- lbs. --- hrs.
Oil 10 bbls., 1st 24 hrs.
Fresh water 300 feet 484 feet
Salt water 1200 feet --- feet

| Casing and Tubing | Used in Drilling | Left in Well | Packers |
|-------------------|------------------|--------------|--------------------------|
| Size | | | |
| 16 | | | Kind of Packer <u>--</u> |
| 13 | | | <u>--</u> |
| 10 | | | Size of <u>--</u> |
| 8 1/4 | <u>500'</u> | | <u>--</u> |
| 6 5/8 | <u>1760'</u> | | Depth set <u>--</u> |
| 5 3/16 | | | <u>--</u> |
| 3 | | | Perf. top <u>--</u> |
| 2 | | | Perf. bottom <u>--</u> |
| Liners Used | | | Perf. top <u>--</u> |
| <u>Cond.</u> | <u>16'</u> | | Perf. bottom <u>--</u> |

CASING CEMENTED -- SIZE -- No. Ft. -- Date --

COAL WAS ENCOUNTERED AT 300 FEET 36 INCHES
480 FEET 48 INCHES -- FEET -- INCHES
-- FEET -- INCHES -- FEET -- INCHES

| Formation | Color | Hard or Soft | Top | Bottom | Oil, Gas or Water | Depth Found | Remarks |
|---------------------------|-------|--------------|------|--------|-------------------|-------------|-----------|
| Sand | | | 16 | 30 | | | |
| Slate | | | 30 | 60 | | | |
| Sand | | | 60 | 80 | | | |
| Slate | | | 80 | 110 | | | |
| Sand | | | 110 | 130 | | | |
| Slate | | | 130 | 170 | | | |
| Sand | | | 170 | 300 | | | |
| Coal (No commercial coal) | | | 300 | 303 | Water | 300 | 3 Blr. |
| Sand | | | 303 | 460 | | | |
| Slate | | | 460 | 480 | | | |
| Coal (No commercial coal) | | | 480 | 484 | Water | 484 | Hole full |
| Slate | | | 484 | 504 | | | |
| Sand | | | 504 | 980 | | | |
| Salt Sand | | | 980 | 1660 | Water | 1200 | Hole full |
| Slate | | | 1660 | 1680 | | | |
| Red Rock | | | 1680 | 1690 | | | |
| Lime Shells | | | 1690 | 1700 | | | |
| Slate | | | 1700 | 1715 | | | |
| Little Lime | | | 1715 | 1745 | | | |
| Pencil Cave | | | 1745 | 1750 | | | |
| Big Lime | | | 1750 | 1945 | | | |
| Big Injun | | | 1945 | 2025 | | | |
| Slate | | | 2025 | 2085 | | | |
| Lime Shells | | | 2085 | 2175 | | | |
| Slate | | | 2175 | 2375 | | | |
| Shells | | | 2375 | 2415 | | | |
| Brown Shale | | | 2415 | 2434 | | | |
| Berea Sand | | | 2434 | 2454 | | | |
| Total Depth | | | | 2454 | | | |

