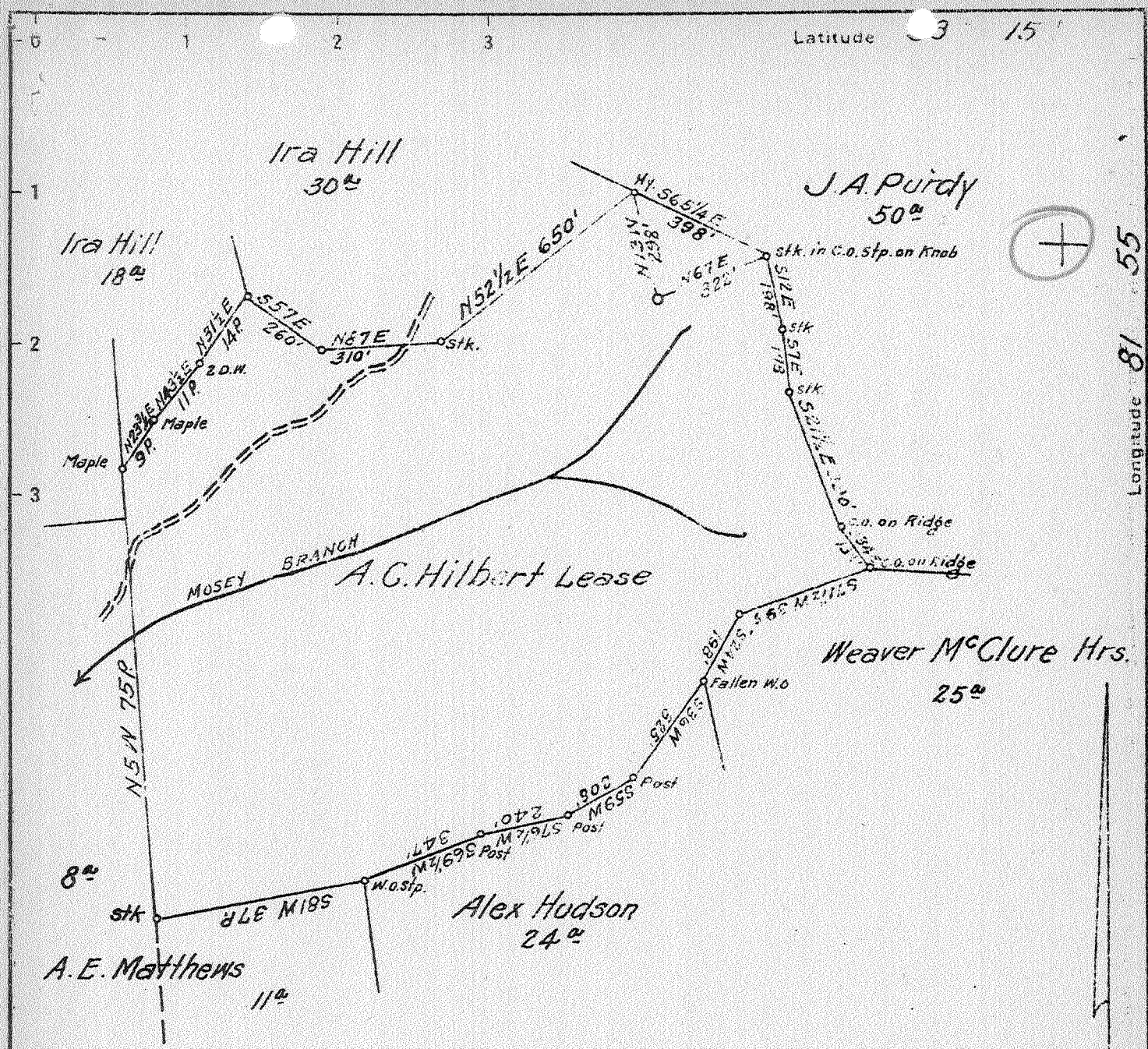


Latitude 3 15'

Longitude 81 55'



No Commercial Coal
 Surface: A. E. Matthews
 Sumerco, W. Va.

0.67 W
 1.58 &

SEP - 8 1942

582 W 74-75 Map 124 W

New Location
 Drill Deeper
 Abandonment X

Company South Penn Natural Gas Co.
 Address Parkersburg, W. Va.
 Farm A.C. Hilbert
 Tract _____ Acres 45 Lease No. 58900
 Well (Farm) No. 5 Serial No. _____
 Elevation (Spirit Level) 1056.77
 Quadrangle Madison
 County Lincoln District Duval
 Engineer E.C. Tabler
 Engineer's Registration No. _____
 File No. _____ Drawing No. _____
 Date 8-4-42 Scale 1" = 400'

STATE OF WEST VIRGINIA
 DEPARTMENT OF MINES
 OIL AND GAS DIVISION
 CHARLESTON

WELL LOCATION MAP
 FILE NO. LIN-342-A

+ Denotes location of well on United States Topographic Maps, scale 1 to 62,500. latitude and longitude lines being represented by border lines as shown.

- Denotes one inch spaces on border line of original tracing.



342A

Duval District, Lincoln County, W. Va.

By South Penn Natural Gas Co., Union Trust Bldg., Parkersburg, W. Va.

Abandoned under permit Lin-.....-A.

On 45 acres, on Porter Fork of Middle Fork of Mud River.

Elevation, 1056.77' L.

Surface owned by A. E. Matthews, Sumerco, W. Va., and minerals by Daniel Matthews et al., Charleston, W. Va.

Drilling commenced May 5, 1911; completed, June 22, 1911.

Shot ~~May~~^{June} 27, 1911, in Berea; and Nov. 8, 1912, in Berea, with 60 qts. each shot.

Oil, 5 bbls., 1st 24 hrs.

Salt water at 1165'.

10" casing, 18'; 8 $\frac{1}{2}$ "¹, 318' (pulled); 6 $\frac{5}{8}$ "², 1853'; 5 $\frac{3}{8}$ "³, 1188'; conductor, 18'.

Coal? was encountered at 900-904'.

Oil well. Abandonment reported to Dept. of Mines Aug. 17, 1942.

Record to RCT from Mrs. Griffith August 22, 1942. Old File No. 604.

	Top.	Bottom.
Slate	18 -	70
Sand	70 -	175
Slate	175 -	250
Sand	250 -	300
Slate	300 -	340
Sand	340 -	400
Slate	400 -	600
Sand	600 -	675
Slate	675 -	775
Sand	775 -	875
Slate	875 -	900
Coal	900 -	904
Sand	904 -	950
Slate	950 -	1000
Sand	1000 -	1050
Slate	1050 -	1090
Salt Sand (water, 1165', hole full)	1090 -	1720
Slate sand	1720 -	1740
Red rock	1740 -	1760
Little Lime	1793 -	1823
Pencil Cave	1823 -	1828
Big Lime (gas, 1893')	1828 -	2010
Red rock	2010 -	2085
Slate and shells	2085 -	2230
Slate and shells	2230 -	2495
Brown shale	2495 -	2521
Berea Sand (oil, 2523-2533')	2521 -	2539
Total depth		2541

STATE OF WEST VIRGINIA
DEPARTMENT OF MINES
OIL AND GAS DIVISION

604

WELL RECORD

Permit No. CN-342-A

Oil or Gas Well OIL
(KIND)

Company South Penn Natural Gas Company
Address Union Trust Bldg. Parkersburg, W. Va.
Farm A. C. Hilbert Acres 45
Location (waters) Porter Fork of Middle Fork of Mud River
Well No. 5 Elev. 1056.77
District Duval County Lincoln
The surface of tract is owned in fee by A. E. Matthews,
Address Sumerco, W. Va.
Mineral rights are owned by Daniel Matthews, et al.,
Address Charleston, W. Va.
Drilling commenced May 5, 1911
Drilling completed June 22, 1911
Date Shot 8-27-11 Berea
11-8-12 From Berea to
With 60 qts. each shot
Open Flow /10ths Water in _____ Inch
/10ths Merc. in _____ Inch
Volume _____ Cu. Ft.
Rock Pressure _____ lbs. _____ hrs.
Oil 5 bbls., 1st 24 hrs.
Fresh water _____ feet _____ feet
Salt water 1165 feet _____ feet

Casing and Tubing	Used in Drilling	Left in Well	Packers
Size			Kind of Packer
16			-
18			-
10	18"		Size of
8 1/4	318" (Pulled)		-
6 5/8	1853"		Depth set
5 3/16	1188"		-
3			Perf. top
2			Perf. bottom
Liners Used			Perf. top
Cond.	18"		Perf. bottom

CASING CEMENTED _____ SIZE _____ No. Ft. _____ Date _____
? COAL WAS ENCOUNTERED AT 900 FEET 48 INCHES
_____ FEET _____ INCHES _____ FEET _____ INCHES
_____ FEET _____ INCHES _____ FEET _____ INCHES

Formation	Color	Hard or Soft	Top	Bottom	Oil, Gas or Water	Depth Found	Remarks
Slate			18	70			
Sand			70	175			
Slate			175	250			
Sand			250	300			
Slate			300	340			
Sand			340	400			
Slate			400	600			
Sand			600	675			
Slate			675	775			
Sand			775	875			
Slate			875	900			
Coal			900	904			
Sand			904	950			
Slate			950	1000			
Sand			1000	1050			
Slate			1050	1090			
Salt Sand			1090	1720			
Slate Sand			1720	1740	Water	1165	Hole full
Red Rock			1740	1760			
Little Lime			1793	1823			
Pencil Cave			1823	1828			
Big Lime			1828	2010			
Red Rock			2010	2085	Gas	1893	
Slate & Shells			2085	2230			
Do			2230	2495			
Brown Shale			2495	2521			
Berea Sand			2521	2539			
					Oil	2523-2533	
Total Depth				2541			

