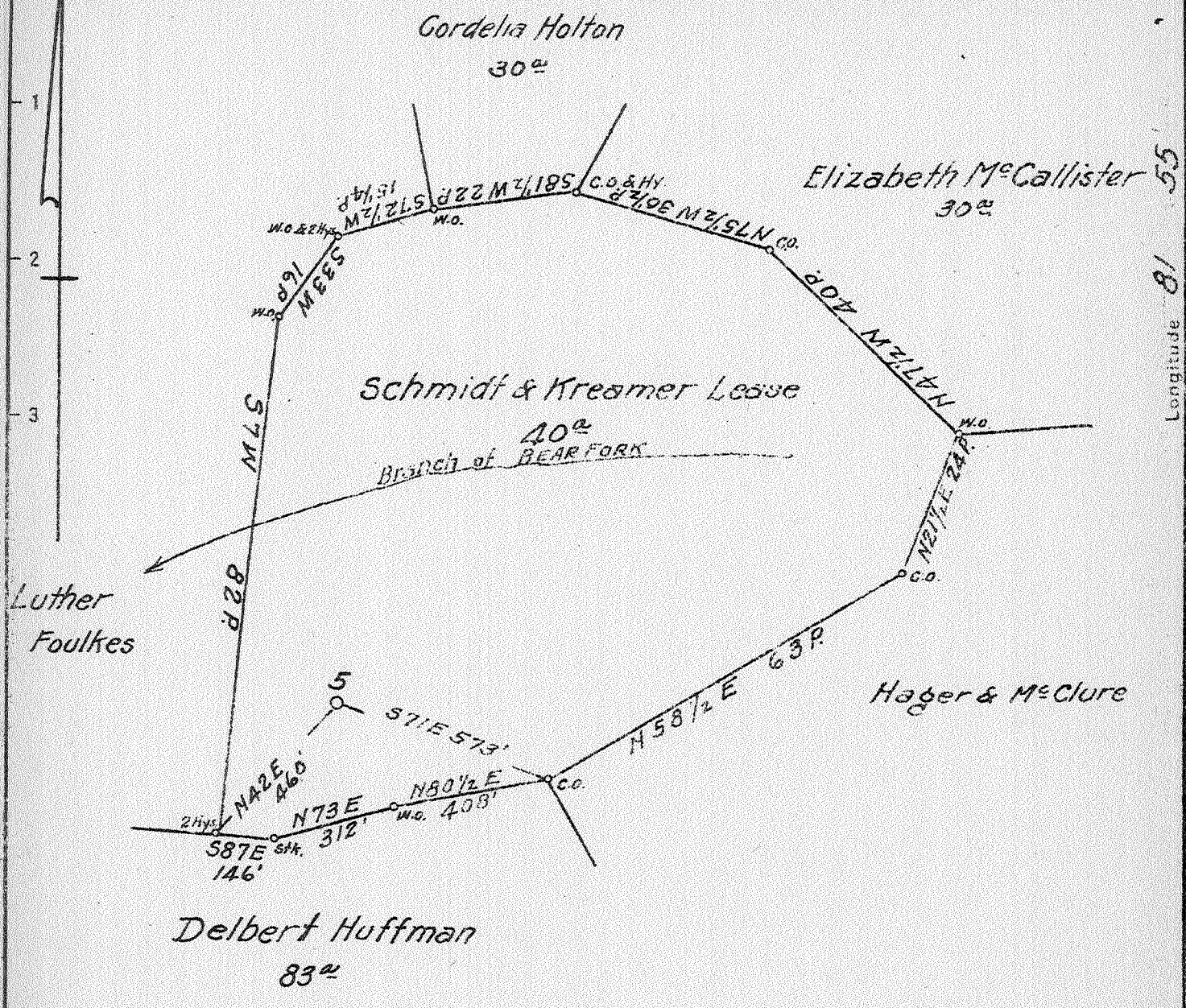


Latitude 38 15

Longitude 81 55



No Commercial Goal.
 Surface: South Penn Natural Gas Co.
 Parkersburg, W. Va.

2.03 W
 0.1 X

New Location
 Drill Deeper
 Abandonment

✓ SEP - 8 1942

S81 W 75-76 Maps 125 W & 124 N

Company	South Penn Natural Gas Co.		
Address	Parkersburg, W. Va.		
Farm	Schmidt & Kreamer		
Tract	Acres 40	Lease No.	71130
Well (Farm) No.	5	Serial No.	71153
Elevation (Spirit Level)	956.55		
Quadrangle	Madison		
County	Lincoln	District	Duval
Engineer	E.C. Tabler		
Engineer's Registration No.			
File No.	Drawing No.		
Date	8-4-42	Scale	1" = 400'

STATE OF WEST VIRGINIA
 DEPARTMENT OF MINES
 OIL AND GAS DIVISION
 CHARLESTON

WELL LOCATION MAP
 FILE NO. LIN-343-A

+ Denotes location of well on United States Topographic Maps, scale 1 to 62,500, latitude and longitude lines being represented by border lines as shown
 - Denotes one inch spaces on border line of original tracing

343A

Duval District, Lincoln County, W. Va.

By South Penn Natural Gas Co., Union Trust Bldg., Parkersburg, W. Va.

Abandoned under permit Lin-.....-A.

On 40 acres, on Bear Fork of Middle Fork of Mud River.

Elevation, 956.55' L.

Surface owned by South Penn Oil Co., Union Trust Bldg., Parkersburg,
W. Va., and minerals by Anna H. Schmidt et al., 995 North Nelson

Road, Columbus, Ohio.

Drilling commenced Sept. 25, 1913; completed, Nov. 7, 1913.

Shot Nov. 10, 1913, with 80 qts.

Oil, 16 bbls., 1st 24 hrs.

Salt water at 1160'.

6⁵/₈" casing, 1795'; 5³/₁₆" conductor, 14'.

Oil well. Abandonment reported to Dept. of Mines Aug. 18, 1942.

Record to RCT from Mrs. Griffith August 22, 1942. Old File No. 634.

	Top.	Bottom.
Slate	14	- 74
Sand	74	- 94
Slate	94	- 150
Sand	150	- 225
Slate	225	- 300
Sand	300	- 390
Slate	390	- 515
Sand	515	- 595
Slate	595	- 705
Sand	705	- 800
Slate	800	- 925
Sand	925	- 995
Slate	995	- 1070
Salt Sand (water, 1160')	1070	- 1755
Little Lime	1755	- 1785
Pencil Cave	1785	- 1790
Big Lime	1790	- 1970
Big Injun Sand	1970	- 2030
Slate	2030	- 2090
Lime shells	2090	- 2200
Slate	2200	- 2419
Brown shale	2419	- 2439
Berea Sand	2439	- 2459
Total depth		2459

STATE OF WEST VIRGINIA
DEPARTMENT OF MINES
OIL AND GAS DIVISION

634

WELL RECORD

Permit No. LIN-343-A

Oil or Gas Well OIL
(KIND)

Company South Penn Natural Gas Company
 Address Union Trust Bldg. Parkersburg, W. Va.
 Farm Schmidt & Kremer Acres 40
 Location (waters) Bear Fork of Middle Fork of Mud River
 Well No. 5 Elev. 956.55
 District Duval County Lincoln
 The surface of tract is owned in fee by South Penn Oil Co. Union Trust Bldg. Address Parkersburg, W. Va.
 Mineral rights are owned by Anna H. Schmidt et al
995 North Nelson Road Address Columbus, Ohio
 Drilling commenced Sept. 25, 1913
 Drilling completed Nov. 7, 1913
 Date Shot 11-10-13 From -- To --
 With 80 quarts
 Open Flow /10ths Water in -- -- -- Inch
 /10ths Merc. in -- -- -- Inch
 Volume -- -- -- Cu. Ft.
 Rock Pressure -- -- -- lbs. -- -- -- hrs.
 Oil 16 bbls., 1st 24 hrs.
 Fresh water -- feet -- feet
 Salt water 1160 feet -- feet

Casing and Tubing
 Used in Drilling
 Left in Well
 Packers

Size
 16.
 13.
 10.
 8 3/4
 6 5/8
 5 3/16
 3.
 2.
 Liners Used
 Cond. 14'

Kind of Packer --
 Size of --
 Depth set --
 Perf. top --
 Perf. bottom --
 Perf. top --
 Perf. bottom --

CASING CEMENTED -- SIZE -- No. Ft. -- Date --

COAL WAS ENCOUNTERED AT -- FEET -- INCHES
-- FEET -- INCHES -- FEET -- INCHES
-- FEET -- INCHES -- FEET -- INCHES

Formation	Color	Hard or Soft	Top	Bottom	Oil, Gas or Water	Depth Found	Remarks
Slate			14	74			
Sand			74	94			
Slate			94	150			
Sand			150	225			
Slate			225	300			
Sand			300	390			
Slate			390	515			
Sand			515	595			
Slate			595	705			
Sand			705	800			
Slate			800	925			
Sand			925	995			
Slate			995	1070			
Salt Sand			1070	1755			
Little Lime			1755	1785	Water	1160	
Pencil Cave			1785	1790			
Big Lime			1790	1970			
Big Injun			1970	2030			
Slate			2030	2090			
Lime Shells			2090	2200			
Slate			2200	2419			
Brown Shale			2419	2439			
Berea Sand			2439	2459			
Total Depth				2459			

