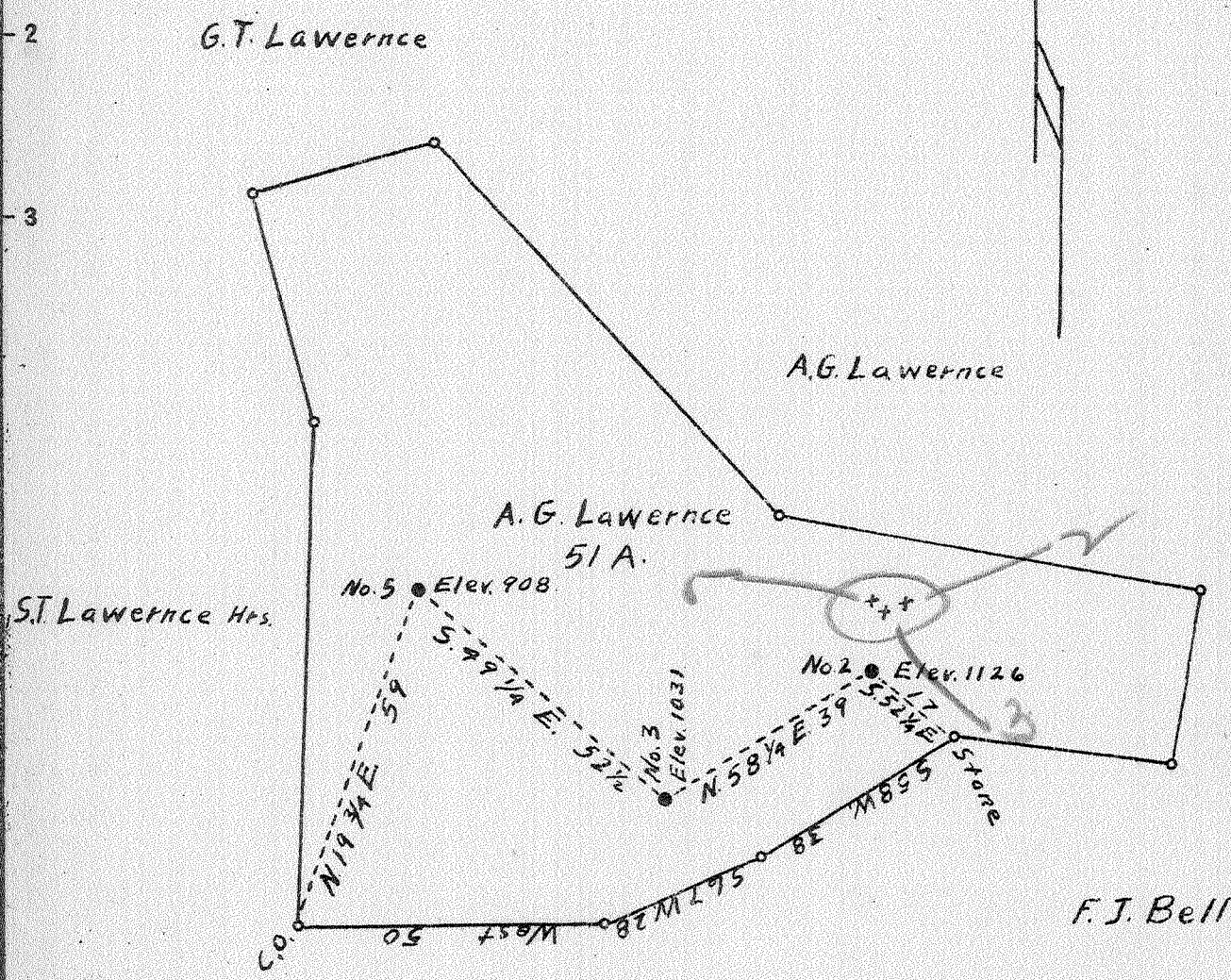


Latitude 38° 20'

Longitude 81° 55'



M.A. Lawerence

#2	2.66 W	5.33 Q
#3	2.77 W	5.31 Q
#5	2.85 W	5.39 Q

New Location
 Drill Deeper
 Abandonment

FEB 10 1943

Company Frick-Ried Supply Corporation
 Address Sandyville, West Virginia
 Farm A.G. Lawerence
 Tract _____ Acres 51 Lease No. _____
 Well (Farm) No. 2-3-5 Serial No. _____
 Elevation (Spirit Level) 1126-1031-908
 Quadrangle Saint Albans
 County Lincoln District Duval
 Engineer A.K. Westfall
 Engineer's Registration No. Co. Surveyor, Ritchie Co.
 File No. _____ Drawing No. _____
 Date May 21, 1942 Scale 1" = 30 Poles

STATE OF WEST VIRGINIA
 DEPARTMENT OF MINES
 OIL AND GAS DIVISION
 CHARLESTON

WELL LOCATION MAP
 FILE NO. LIN-354-A #2
LIN-355-A #3
LIN-356-A #5
 + Denotes location of well on United States Topographic Maps, scale 1 to 62,500, latitude and longitude lines being represented by border lines as shown.
 - Denotes one inch spaces on border line of original tracing.

356A

Duval District, Lincoln County, W. Va.

By Frick-Reid Supply Corp., Drawer 2481, Tulsa, Okla.

Abandoned under permit Lin-.....-A?

On 31 acres, on Valley Fork of Straight Fork of Mud River.

Elevation, 908' L.

Drilling commenced May 3, 1910; completed, June 30, 1910.

Shot July 1, 1910, at 2384-2402', with 85 qts. nitroglycerine.

13" wood conductor, 16'; 6⁵/₈" casing, 1710'; 2" tubing, 2402'.

Oil well. Abandonment reported to Dept. of Mines Aug. 15, 1942.

Record to RCT from Mrs. Griffith Dec. 19, 1942.

	Top.	Bottom.
Slate	0	- 20
Red rock	20	- 55
Slate	55	- 95
Sand	95	- 115
Slate	115	- 200
Red rock	200	- 220
Sand	220	- 260
Slate	260	- 320
Sand	320	- 410
Slate	410	- 610
Sand	610	- 700
Slate	700	- 750
Sand	750	- 1045
Slate and shells	1045	- 1110
Salt Sand	1110	- 1662
Little Lime	1662	- 1697
Pencil Cave	1697	- 1702
Big Lime	1702	- 1882
Red rock	1882	- 2012
Slate	2012	- 2092
Squaw Sand	2092	- 2172
Slate and shells	2172	- 2382
Berea Sand	2382	- 2402
Total depth		2404

STATE OF WEST VIRGINIA
DEPARTMENT OF MINES
OIL AND GAS DIVISION

647

WELL RECORD

Permit No. 756A Oil or Gas Well Oil Well
(KIND)

Company Erick-Reid Supply Corporation
 Address Drawer 2481, Tulsa, Okla.
 Farm A. G. Lawrence Acres 31
 Location (waters) Valley Fr. of Str. Fr. Mud River
 Well No. Five Elev. 908
 District Duval County Lincoln
 The surface of tract is owned in fee by _____
 Address _____
 Mineral rights are owned by _____
 Address _____
 Drilling commenced May 3, 1910
 Drilling completed June 30, 1910
 Date Shot 7/1/10 From 2384 To 2402
 With 85 Qts Nitro-glycerine
 Open Flow _____ /10ths Water in _____ Inch
 _____ /10ths Merc. in _____ Inch
 Volume _____ Cu. Ft.
 Rock Pressure _____ lbs. _____ hrs.
 Oil _____ bbls., 1st 24 hrs.
 Fresh water _____ feet _____ feet
 Salt water _____ feet _____ feet

Casing and Tubing	Used in Drilling	Left in Well	Packers
Size			Kind of Packer
16			
13 <u>Wood</u>	<u>16</u>	<u>16</u>	
10			Size of
8 1/4			
6 5/8	<u>1710</u>	<u>1710</u>	Depth set
5 3/16			
3			Perf. top
2		<u>2402</u>	Perf. bottom
Liners Used			Perf. top
			Perf. bottom

CASING CEMENTED _____ SIZE _____ No. Ft. _____ Date _____
 COAL WAS ENCOUNTERED AT _____ FEET _____ INCHES
 _____ FEET _____ INCHES FEET _____ INCHES
 _____ FEET _____ INCHES FEET _____ INCHES

Formation	Color	Hard or Soft	Top	Bottom	Oil, Gas or Water	Depth Found	Remarks
Slate			0	20			
Red rock			20	55			
Slate			55	95			
Sand			95	115			
Slate			115	200			
Red rock			200	220			
Sand			220	260			
Slate			260	320			
Sand			320	410			
Slate			410	610			
Sand			610	700			
Slate			700	750			
Sand			750	1045			
Slate & shells			1045	1110			
Salt sand			1110	1662			
Little lime			1662	1697			
Pencil cave			1697	1702			
Big lime			1702	1882			
Red rock			1882	2012			
Slate			2012	2092			
Squaw sand			2092	2172			
Slate & shells			2172	2382			
Berea sand			2382	2402			
Total depth			2404				

