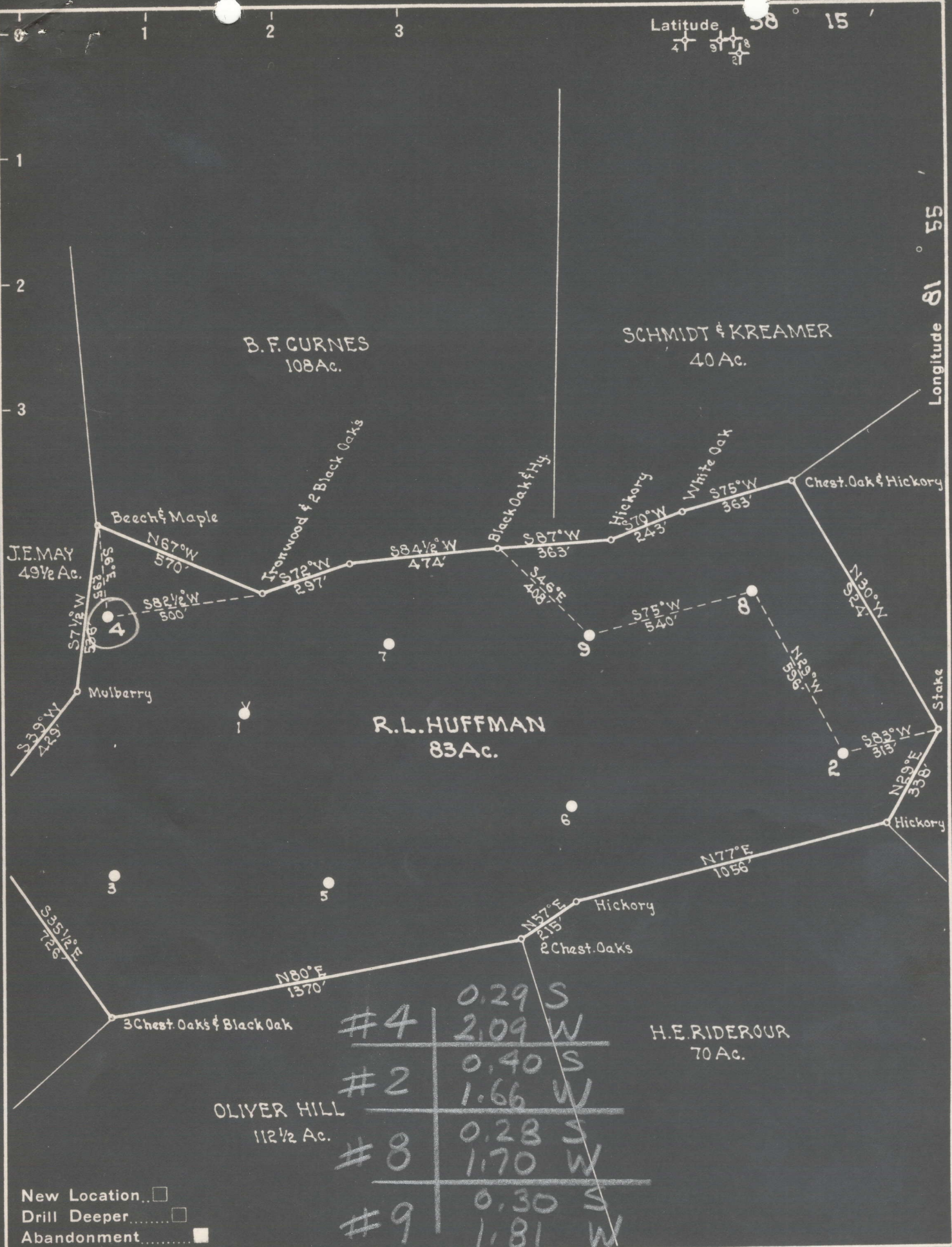


Latitude 38° 15'

Longitude 81° 55'



#4	0.29 S
	2.09 W
#2	0.40 S
	1.66 W
#8	0.28 S
	1.70 W
#9	0.30 S
	1.81 W

New Location   
 Drill Deeper   
 Abandonment

Company UNITED FUEL GAS CO.  
 Address CHARLESTON, W.VA.  
 Farm R.L. HUFFMAN  
 Tract \_\_\_\_\_ Acres 83 Lease No. 71122  
 Well (Farm) No. 2-4849 Serial No. F9721 F9722  
 Elevation (Spirit Level) 2-1025, 4-744, 8-942, 9-991  
 Quadrangle MADISON  
 County LINCOLN District DUVAL  
 Engineer J.H. Moore  
 Engineer's Registration No. 662  
 File No. 44-51 Drawing No. \_\_\_\_\_  
 Date 8-23-49 Scale 1" = 400'

STATE OF WEST VIRGINIA  
 DEPARTMENT OF MINES  
 OIL AND GAS DIVISION  
 CHARLESTON

**WELL LOCATION MAP**  
 FILE NO. LIN-464-A #4

+ Denotes location of well on United States Topographic Maps, scale 1 to 62,500, latitude and longitude lines being represented by border lines as shown.

- Denotes one inch spaces on border line of original tracing.

R. L. HUFFMAN NO. 4 WELL.

464A

Duval District, Lincoln County, W. Va.  
By United Fuel Gas Co., Charleston, W. Va.  
Abandoned under permit Lin-.....-A?  
On 83 acres, on Bear Fork.  
Elevation, .....<sup>1</sup> L.  
Minerals owned by R. L. Huffman.  
Drilling completed April 1, 1912.  
6<sup>5</sup>/<sub>8</sub>" casing, 1550'; 2" tubing, 2234'.  
Gas anchor packer, 2 x 6<sup>5</sup>/<sub>8</sub> x 10".  
Gas well. Record to Dept. of Mines stamped June 25, 1948.  
Record to RCT from Mrs. Griffith Sept. 3, 1948. Old File No. 738.

	Top.	Bottom.
Conductor	0	16
Salt Sand	885	1365
Little Lime	1495	1525
Pencil Cave	1525	1530
Big Lime	1530	1730
Big Injun Sand	1730	1815
Brown shale	2184	2219
Berea Sand	2219	2240
Total depth		2240



738

STATE OF WEST VIRGINIA  
DEPARTMENT OF MINES  
OIL AND GAS DIVISION

WELL RECORD

Permit No. 464-A

Oil or Gas Well Gas  
(KIND)

Company United Fuel Gas Company  
 Address Charleston, West Virginia  
 Farm R. L. Huffman Acres 83  
 Location (waters) Bear Fork  
 Well No. 4 Elev. \_\_\_\_\_  
 District Duval County Lincoln  
 The surface of tract is owned in fee by \_\_\_\_\_  
 Address \_\_\_\_\_  
 Mineral rights are owned by R. L. Huffman  
 Address \_\_\_\_\_  
 Drilling commenced \_\_\_\_\_  
 Drilling completed April 1, 1912  
 Date Shot \_\_\_\_\_ From \_\_\_\_\_ To \_\_\_\_\_  
 With \_\_\_\_\_  
 Open Flow \_\_\_\_\_ /10ths Water in \_\_\_\_\_ Inch  
 \_\_\_\_\_ /10ths Merc. in \_\_\_\_\_ Inch  
 Volume \_\_\_\_\_ Cu. Ft.  
 Rock Pressure \_\_\_\_\_ lbs. \_\_\_\_\_ hrs.  
 Oil \_\_\_\_\_ bbls., 1st 24 hrs.  
 Fresh water \_\_\_\_\_ feet \_\_\_\_\_ feet  
 Salt water \_\_\_\_\_ feet \_\_\_\_\_ feet

Casing and Tubing	Used in Drilling	Left in Well	Packers
Size			
16			Kind of Packer _____
18			<u>Gas Anchor</u>
10			Size of <u>2"x6-5/8"</u>
8 1/4			<u>x10"</u>
6 5/8	<u>1550</u>	<u>1550</u>	Depth set _____
5 3/16			
3			Perf. top _____
2		<u>2234</u>	Perf. bottom _____
Liners Used _____			Perf. top _____
			Perf. bottom _____

CASING CEMENTED \_\_\_\_\_ SIZE \_\_\_\_\_ No. Ft. \_\_\_\_\_ Date \_\_\_\_\_  
 COAL WAS ENCOUNTERED AT \_\_\_\_\_ FEET \_\_\_\_\_ INCHES  
 \_\_\_\_\_ FEET \_\_\_\_\_ INCHES FEET \_\_\_\_\_ INCHES  
 \_\_\_\_\_ FEET \_\_\_\_\_ INCHES FEET \_\_\_\_\_ INCHES

Formation	Color	Hard or Soft	Top	Bottom	Oil, Gas or Water	Depth Found	Remarks
Cond.			-	16			
Salt Sand			885	1365			
Little Lime			1495	1525			
Pencil Cave			1525	1530			
Big Lime			1530	1730			
Big Injun			1730	1815			
Brown Shale			2184	2219			
Berea			2219	2240			

