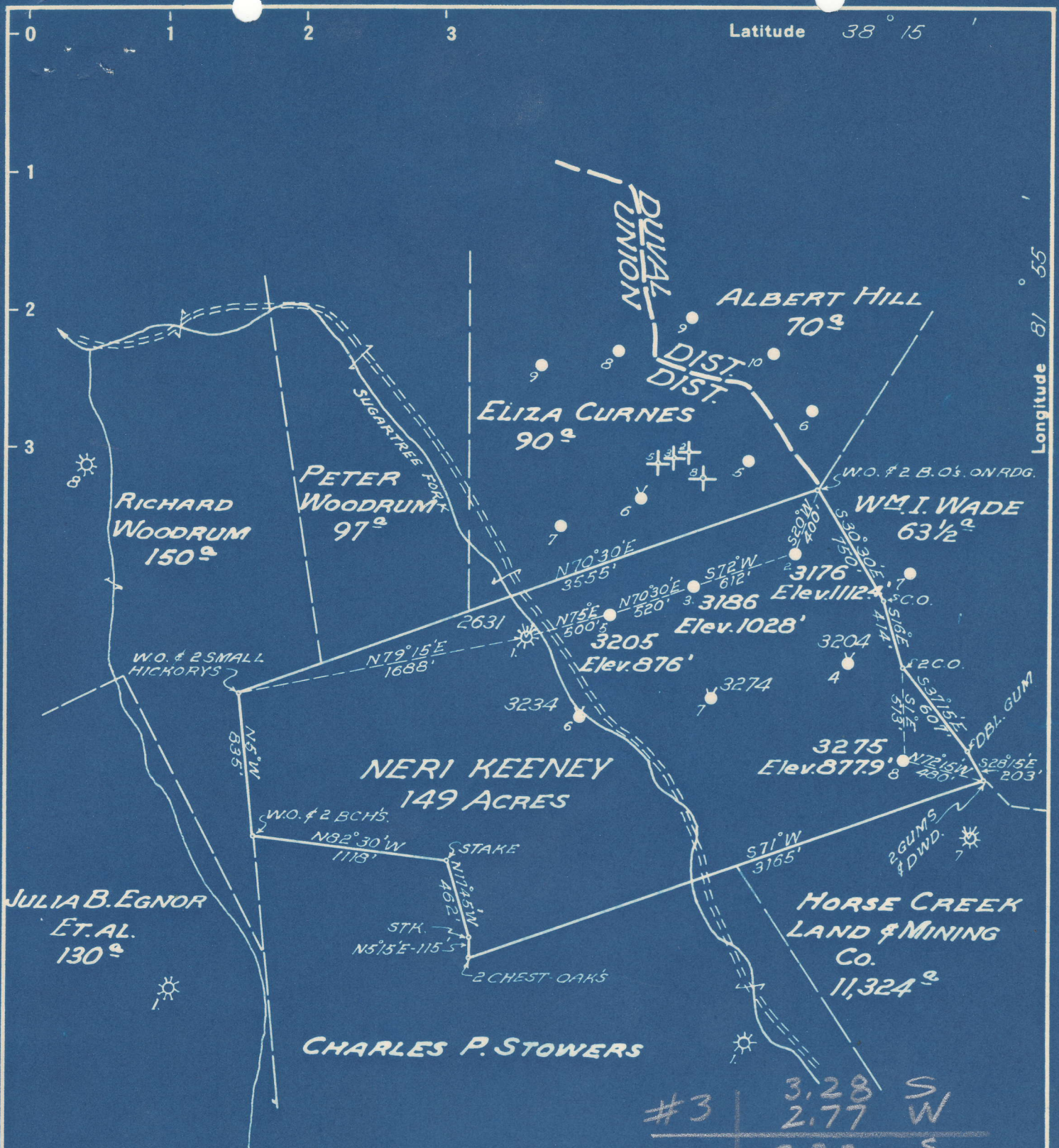


Latitude 38° 15'

Longitude 81° 55'



#3	3.28	S
	2.77	W
#2	3.23	S
	2.67	W
#8	3.42	S
	2.56	W
#5	3.31	S
	2.89	W

New Location   
 Drill Deeper   
 Abandonment

Company UNITED FUEL GAS CO.  
 Address CHARLESTON, W. VA.  
 Farm NERI KEENEY  
 Tract 1 Acres 149 Lease No. 1253  
 Well (Farm) No. 2,3,5,8 Serial No. 3176-3186  
 Elevation (Spirit Level) SEE ABOVE  
 Quadrangle MADISON  
 County LINCOLN District UNION  
 Engineer [Signature]  
 Engineer's Registration No. 662  
 File No. 42-44-49 Drawing No.   
 Date AUGUST 17, 48 Scale 1" = 800'

STATE OF WEST VIRGINIA  
 DEPARTMENT OF MINES  
 OIL AND GAS DIVISION  
 CHARLESTON

**WELL LOCATION MAP**

FILE NO. LIN-485-A-#3  
LIN-510 LIN-493-A-#2  
#5 LIN-504-A-#8  
 + Denotes location of well on United States Topographic Maps, scale 1 to 62,500, latitude and longitude lines being represented by border lines as shown.

- Denotes one inch spaces on border line of original tracing.

NERI KENNEY NO. 3 WELL.

485A

Union District, Lincoln County, W. Va.  
 By United Fuel Gas Co., G. H. Moore, Box 1273, Charleston, W. Va.  
 Abandoned under permit Min-.....-A?  
 On.....acres.  
 Elevation, .....' L.  
 Drilling commenced May 22, 1915; completed July 1, 1915.  
 Casing record not given.  
 Gas well. Record to Dept. of Mines stamped....7, 1948.  
 Record to RCT from Mrs. Griffith September 14, 1949. Old File No. 1026.

	Top.	Bottom.
Slate	0	30
Sand	30	200
Slate	200	220
Sand	220	500
Slate	500	520
Coal	520	524
Slate	524	674
Sand	674	1000
Lime	1000	1020
Salt Sand	1020	1680
Slate and shells	1680	1715
Red rock	1715	1725
Slate	1725	1780
Pencil Cave	1780	1792
Big Lime	1792	1987
Big Injun Sand	1987	2050
Slate and shells	2050	2460
Brown shale	2460	2481
Berea Sand	2481	2503
Total depth		2503



STATE OF WEST VIRGINIA  
DEPARTMENT OF MINES  
OIL AND GAS DIVISION

1026

WELL RECORD

Permit No. 485-A

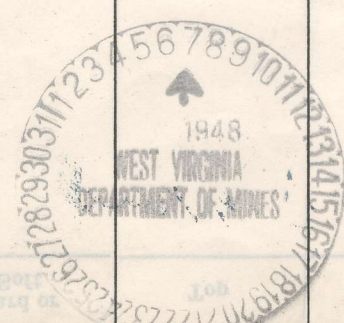
Oil or Gas Well Gas  
(KIND)

Company United Fuel Gas Co.  
 Address c/o G.H. Moore P.O. Box 1273  
Charleston W. Va.  
 Farm Neri Kenney Acres \_\_\_\_\_  
 Location (waters) \_\_\_\_\_  
 Well No. 3 Elev. \_\_\_\_\_  
 District Union County Lincoln  
 The surface of tract is owned in fee by \_\_\_\_\_  
 Address \_\_\_\_\_  
 Mineral rights are owned by \_\_\_\_\_  
 Address \_\_\_\_\_  
 Drilling commenced 5-22-1915  
 Drilling completed 7-1-1915  
 Date Shot \_\_\_\_\_ From \_\_\_\_\_ To \_\_\_\_\_  
 With \_\_\_\_\_  
 Open Flow \_\_\_\_\_ /10ths Water in \_\_\_\_\_ Inch  
 \_\_\_\_\_ /10ths Merc. in \_\_\_\_\_ Inch  
 Volume \_\_\_\_\_ Cu. Ft.  
 Rock Pressure \_\_\_\_\_ lbs. \_\_\_\_\_ hrs.  
 Oil \_\_\_\_\_ bbls., 1st 24 hrs.  
 Fresh water \_\_\_\_\_ feet \_\_\_\_\_ feet  
 Salt water \_\_\_\_\_ feet \_\_\_\_\_ feet

Casing and Tubing	Used in Drilling	Left in Well	Packers
Size			
16			Kind of Packer _____
13			
10			Size of _____
8 1/4			
6 1/2			Depth set _____
5 3/16			
3			Perf. top _____
2			Perf. bottom _____
Liners Used			Perf. top _____
			Perf. bottom _____

CASING CEMENTED \_\_\_\_\_ SIZE \_\_\_\_\_ No. Ft. \_\_\_\_\_ Date \_\_\_\_\_  
 COAL WAS ENCOUNTERED AT \_\_\_\_\_ FEET \_\_\_\_\_ INCHES  
 \_\_\_\_\_ FEET \_\_\_\_\_ INCHES FEET \_\_\_\_\_ INCHES  
 \_\_\_\_\_ FEET \_\_\_\_\_ INCHES FEET \_\_\_\_\_ INCHES

Formation	Color	Hard or Soft	Top	Bottom	Oil, Gas or Water	Depth Found	Remarks
Slate			0	30			
Sand			30	200			
Slate			200	220			
Sand			220	500			
Slate			500	520			
Coal			520	524			
Slate			524	674			
Sand			674	1000			
Lime			1000	1020			
Salt Sand			1020	1680			
Slate and Shells			1680	1715			
Red Rock			1715	1725			
Slate			1725	1780			
Pencil Cave			1780	1792			
Big Lime			1792	1987			
Big Injun			1987	2050			
Slate and Shells			2050	2460			
Brown Shale			2460	2481			
Berea			2481	2503			



SEP 14 1949