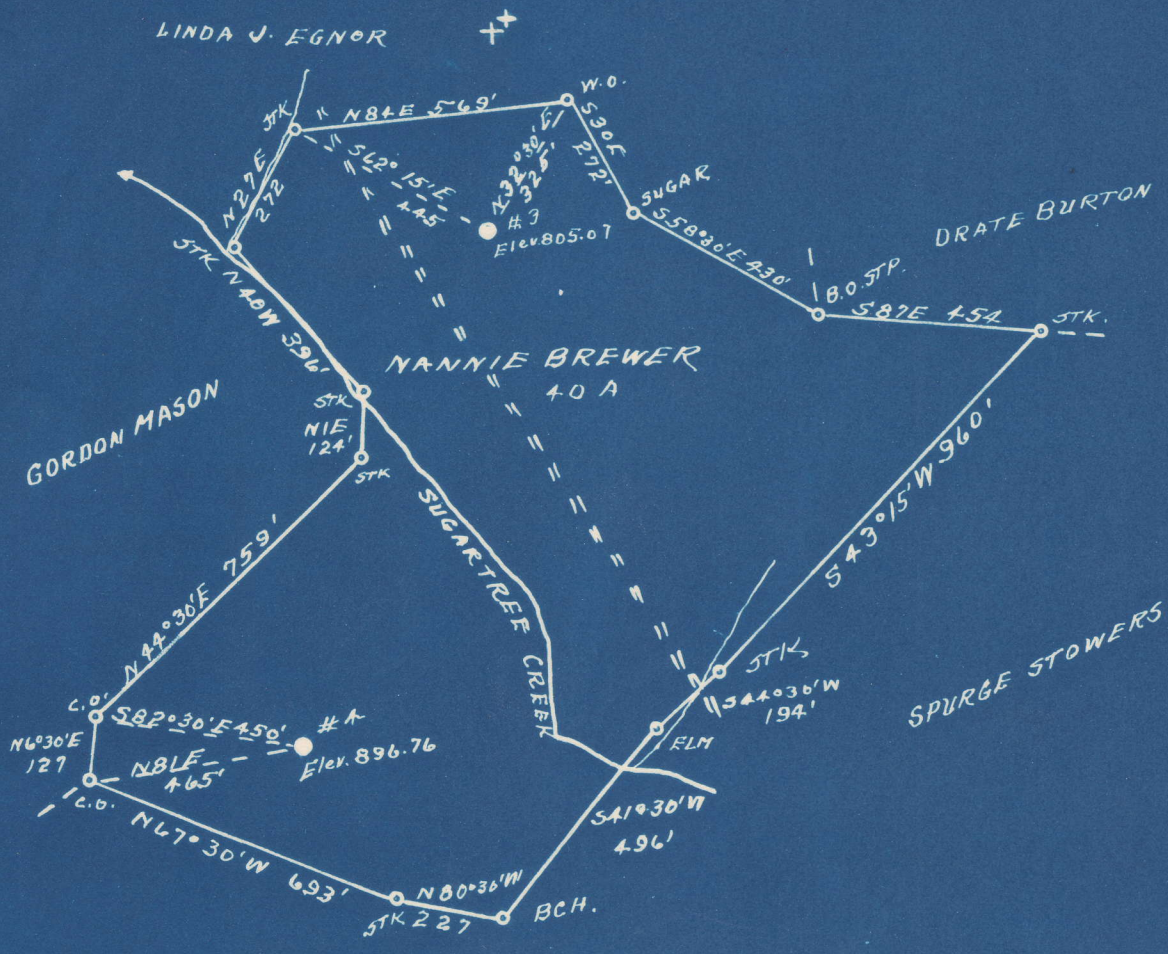


Latitude 38° 15'

Longitude 81° 55'



#4	2.60 S
	4.22 W
#3	2.53 S
	4.14 W

New Location...
 Drill Deeper...
 Abandonment...

Company C. R. DELAY
 Address HAMLIN, W. VA.
 Farm NANNIE BREWER
 Tract _____ Acres 40 Lease No. _____
 Well (Farm) No. 53-4 Serial No. _____
 Elevation (Spirit Level) #3-805.07-#4-896.76
 Quadrangle MADISON
 County LINCOLN District UNION
 Engineer L. F. Dye
 Engineer's Registration No. 804
 File No. _____ Drawing No. _____
 Date 8-23-48 Scale 1" = 400'

STATE OF WEST VIRGINIA
 DEPARTMENT OF MINES
 OIL AND GAS DIVISION
 CHARLESTON

WELL LOCATION MAP
 FILE NO. LIN-515-A-#4
LIN-518-A-#3

+ Denotes location of well on United States Topographic Maps, scale 1 to 62,500, latitude and longitude lines being represented by border lines as shown.
 - Denotes one inch spaces on border line of original tracing.



ex plat 515A

Completed by Inspector

711

STATE OF WEST VIRGINIA DEPARTMENT OF MINES OIL AND GAS DIVISION

WELL RECORD

Permit No. 518-A

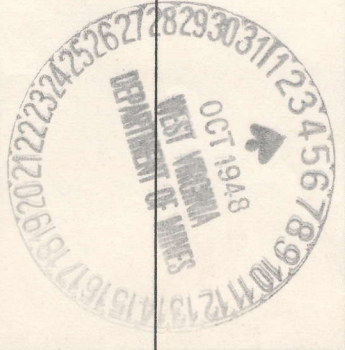
Oil or Gas Well 11 (KIND)

Company C. R. De Lay
Address P. O. Box 49 Hamlin, W. Va.
Farm Nannie Brewer Acres 39
Location (waters)
Well No. three (3) Elev. 805.07
District Duval County Lincoln
The surface of tract is owned in fee by
Mineral rights are owned by South Penn Natural Gas Co. Address Parkersburg, W. Va.
Drilling commenced July 26, 1909
Drilling completed September 7, 1909
Date Shot From To
With
Open Flow /10ths Water in Inch
/10ths Merc. in Inch
Volume Cu. Ft.
Rock Pressure lbs. hrs.
Oil bbls., 1st 24-hrs.
Fresh water feet feet
Salt water feet feet

Table with columns: Casing and Tubing, Used in Drilling, Left in Well, Packers. Includes rows for tubing sizes (16, 13, 10, 8 1/4, 6 5/8, 5 3/16, 3, 2) and packer depths (1665', 2291').

Table with columns: CASING CEMENTED, SIZE, No. Ft., Date. Includes rows for COAL WAS ENCOUNTERED AT with measurements in FEET and INCHES.

Main well log table with columns: Formation, Color, Hard or Soft, Top, Bottom, Oil, Gas or Water, Depth Found, Remarks. Rows include Cond, Salt Sand, Little Lime, Big Lime, Big Injun, Brown Shale, Berea.



JAN 22 1949