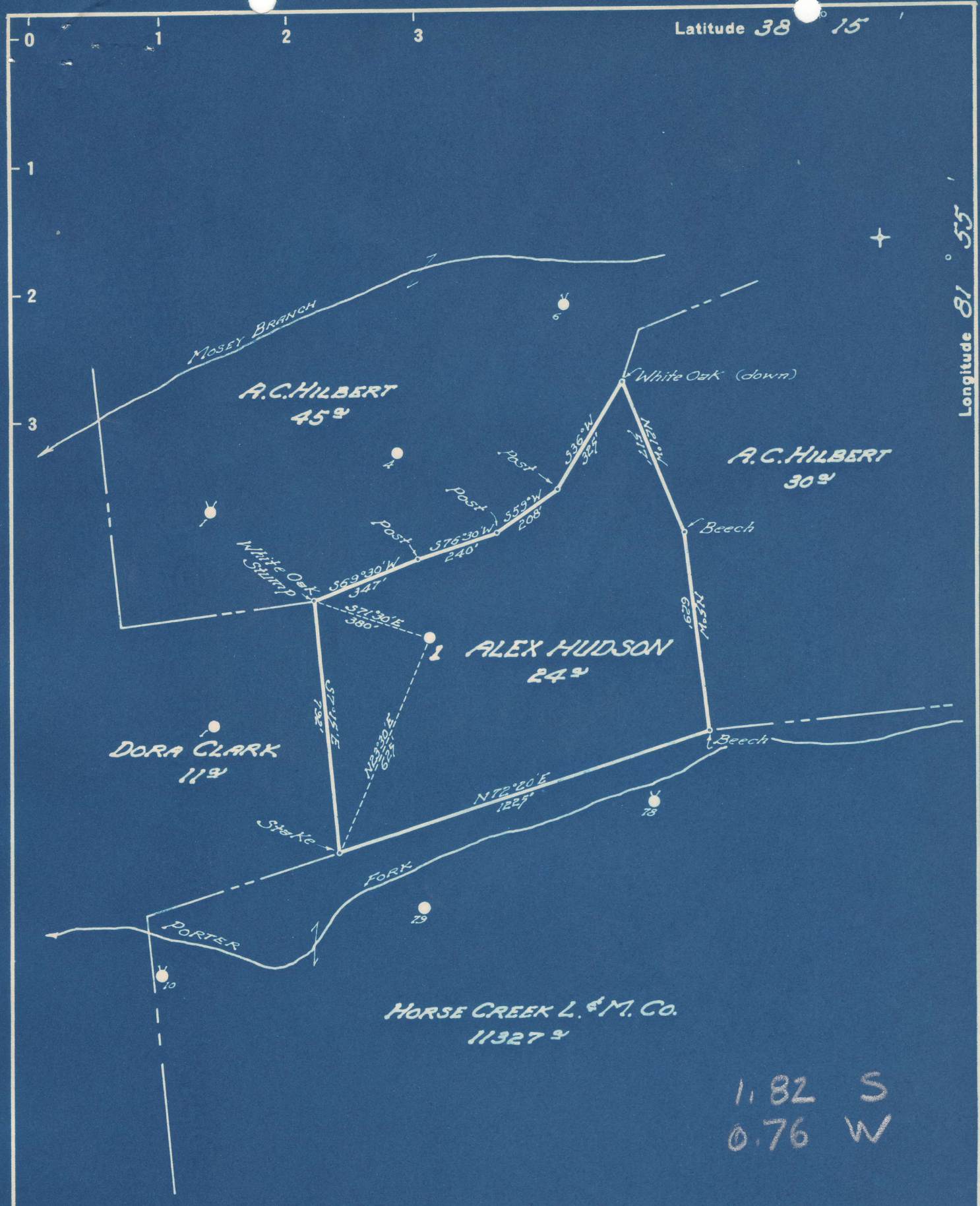


Latitude 38° 15'

Longitude 81° 55'



1.82 S  
0.76 W

- New Location
- Drill Deeper
- Abandonment

Company UNITED FUEL GAS CO.  
 Address CHARLESTON, W.VA.  
 Farm ALEX HUDSON  
 Tract \_\_\_\_\_ Acres 24 Lease No. \_\_\_\_\_  
 Well (Farm) No. 1 Serial No. F-9861  
 Elevation (Spirit Level) 1077  
 Quadrangle MADISON  
 County LINCOLN District DUVAL  
 Engineer [Signature]  
 Engineer's Registration No. 662  
 File No. 44-49 Drawing No. \_\_\_\_\_  
 Date 3-3-49 Scale 1" = 400'

STATE OF WEST VIRGINIA  
 DEPARTMENT OF MINES  
 OIL AND GAS DIVISION  
 CHARLESTON

**WELL LOCATION MAP**  
 FILE NO. LIN-565-A

+ Denotes location of well on United States Topographic Maps, scale 1 to 62,500, latitude and longitude lines being represented by border lines as shown.

- Denotes one inch spaces on border line of original tracing.

ALEX HUDSON NO. 1 WELL.

565A

Duval District, Lincoln County, W. Va.  
 By United Fuel Gas Co., Charleston, W. Va.  
 Abandoned under permit Lin-.....-A?  
 On ..... acres.  
 Elevation, ..... ' L.  
 Drilling ~~completed~~<sup>menced</sup> April 19, 1910.  
 8 $\frac{1}{4}$ " casing, 270'; 6 $\frac{5}{8}$ ", 1000'; 5 $\frac{3}{16}$ ", 2218'.  
 Oil? well. Record to Dept. of Mines not dated or stamped.  
 Record to RCT from Mrs. Geiffith March 17, 1949. Old File No. 813.

	Top.	Bottom.
Clay	0	17
Sand	17	115
Red rock	115	175
Sand	175	190
Slate	190	200
Sand	200	380
Slate	380	390
Sand	390	615
Coal	615	621
Sand	621	800
Slate	800	815
Sand	815	915
Slate	915	935
Coal	935	938
Lime	938	1120
Salt Sand	1120	1732
Slate	1732	1735
Little Lime	1735	1780
Pencil Cave	1780	1785
Big Lime	1785	1975
Big Injun Sand	1975	2025
Slate and shells	2025	2468
Berea Sand	2468	2483
Total depth		2488



813

STATE OF WEST VIRGINIA  
DEPARTMENT OF MINES  
OIL AND GAS DIVISION

WELL RECORD

Permit No. 565-A

Oil or Gas Well ~~(KIND)~~

Company United Fuel Gas Company  
Address Charleston, W. Va.  
Farm Alex Hudson Acres \_\_\_\_\_  
Location (waters) \_\_\_\_\_  
Well No. 1 Elev. \_\_\_\_\_  
District Duval County Lincoln  
The surface of tract is owned in fee by Same  
Address \_\_\_\_\_  
Mineral rights are owned by \_\_\_\_\_  
Address \_\_\_\_\_

Drilling commenced April 10, 1910  
Drilling completed \_\_\_\_\_  
Date Shot \_\_\_\_\_ From \_\_\_\_\_ To \_\_\_\_\_  
With \_\_\_\_\_

Open Flow \_\_\_\_\_ /10ths Water in \_\_\_\_\_ Inch  
\_\_\_\_\_ /10ths Merc. in \_\_\_\_\_ Inch  
Volume \_\_\_\_\_ Cu. Ft.  
Rock Pressure \_\_\_\_\_ lbs. \_\_\_\_\_ hrs.  
Oil \_\_\_\_\_ bbls., 1st 24 hrs.  
Fresh water \_\_\_\_\_ feet \_\_\_\_\_ feet  
Salt water \_\_\_\_\_ feet \_\_\_\_\_ feet

Casing and Tubing	Used in Drilling	Left in Well	Packers
Size			
16			Kind of Packer
13			
10			Size of
8 3/4	270		
6 5/8	1800		Depth set
5 3/16	2218		
3			Perf. top
2			Perf. bottom
Liners Used			Perf. top
			Perf. bottom

CASING CEMENTED	SIZE	No. Ft.	Date
COAL WAS ENCOUNTERED AT		FEET	INCHES
	FEET	INCHES	FEET
	FEET	INCHES	FEET

Formation	Color	Hard or Soft	Top	Bottom	Oil, Gas or Water	Depth Found	Remarks
Clay			0	17			
Sand			17	115			
Red Rock			115	175			
Sand			175	190			
Slate			190	200			
Sand			200	380			
Slate			380	390			
Sand			390	615			
Coal			615	621			
Sand			621	800			
Slate			800	815			
Sand			815	915			
Slate			915	935			
Coal			935	938			
Lime			938	1120			
Salt Sand			1120	1732			
Slate			1732	1735			
Little Lime			1735	1780			
Pencil Cave			1780	1785			

Formation	Color	Hard or Soft	Top	Bottom	Oil, Gas or Water	Depth Found	Remarks
Big Lime			1785	1975			
Injun Sand			1975	2025			
Slate & Shells			2025	2463			
Berea Sand			2463	2483			
Total Depth						2483	

DEPARTMENT OF MINES  
STATE OF WEST VIRGINIA

Date \_\_\_\_\_, 19\_\_\_\_

APPROVED \_\_\_\_\_, Owner

By \_\_\_\_\_ (Title)