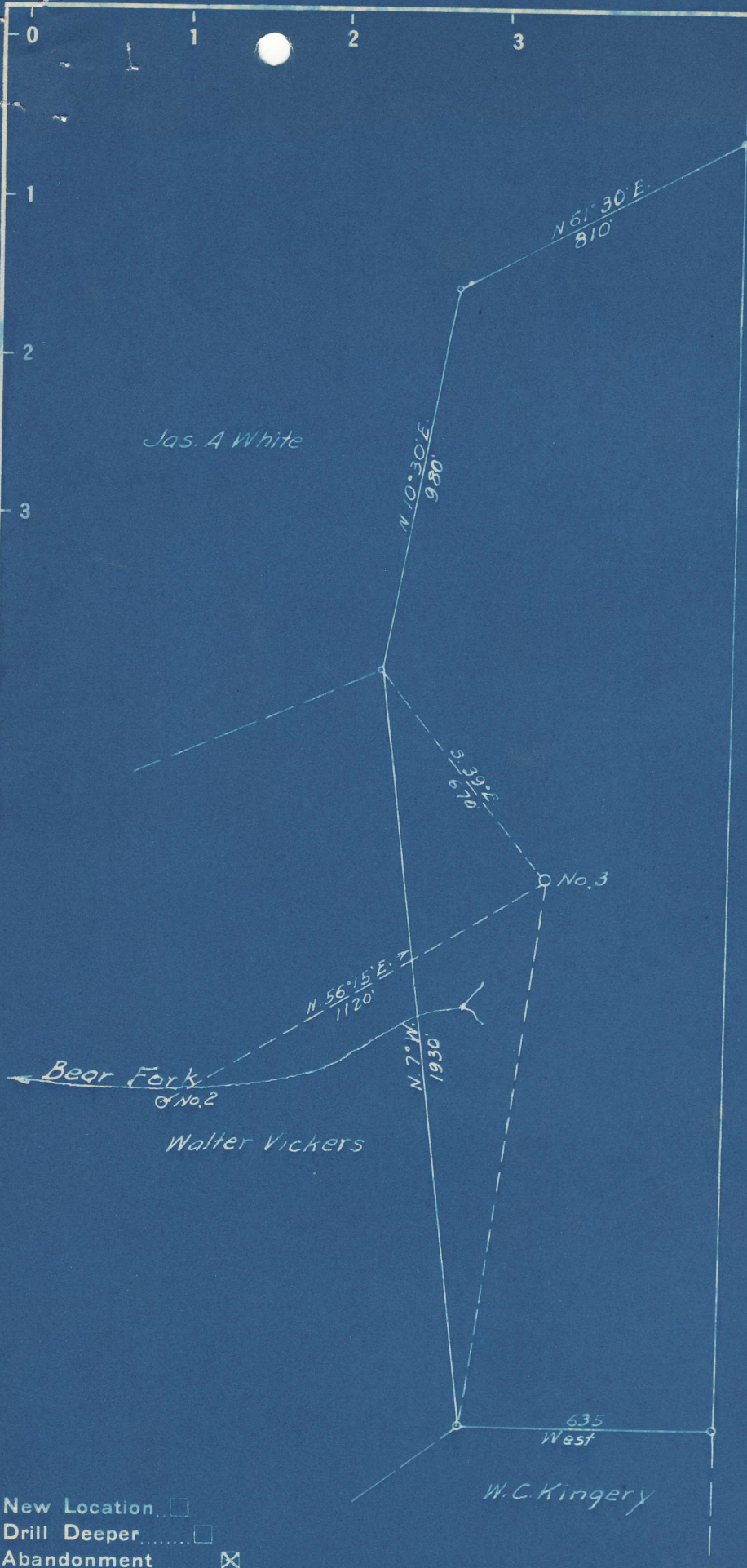


Latitude 38° 15'

Longitude 81° 55'



Jennie Jones

0.79 S  
1.20 W

- New Location
- Drill Deeper
- Abandonment

Company C. R. DELAY  
 Address HAMLIN, W. VA  
 Farm W. S. KEELING  
 Tract \_\_\_\_\_ Acres 50 Lease No. \_\_\_\_\_  
 Well (Farm) No. 3 Serial No. \_\_\_\_\_  
 Elevation (Spirit Level) 975  
 Quadrangle MADISON  
 County LINCOLN District DUVAL  
 Engineer G. C. Ewing  
 Engineer's Registration No. 309  
 File No. \_\_\_\_\_ Drawing No. \_\_\_\_\_  
 Date 12-31-48 Scale \_\_\_\_\_

STATE OF WEST VIRGINIA  
 DEPARTMENT OF MINES  
 OIL AND GAS DIVISION  
 CHARLESTON

WELL LOCATION MAP  
 FILE NO. LIN-584-A

+ Denotes location of well on United States Topographic Maps, scale 1 to 62,500, latitude and longitude lines being represented by border lines as shown.

- Denotes one inch spaces on border line of original tracing.

W. S. KEELING NO. 3 WELL.

Duval District, Lincoln County, W. Va.  
By South Penn Natural Gas Co., Parkersburg, W. Va.  
Abandoned under permit Lin-.....-A?  
On ..... acres.  
Elevation, ..... ' L.  
Drilling commenced June 6, 1914; completed Aug. 31, 1915. (?)  
6 $\frac{5}{8}$ " casing, 1820'; 5 $\frac{3}{16}$ " tubing, 1869'; 2" tubing, 2519'; all left in.  
Oil well. Record to Dept. of Mines stamped Jan. 10, 1949.  
Record to RCT from Mrs. Griffith March 17, 1949. Old File No. 815.

584A

	Top.	Bottom.
Conductor	0	16
Salt Sand	1125	1760
Little Lime	1775	1810
Pencil Cave	1810	1815
Big Lime	1815	1995
Big Injun Sand	1995	2075
Brown shale	2478	2499
Berea Sand	2499	2519
Total depth		2519



STATE OF WEST VIRGINIA  
DEPARTMENT OF MINES  
OIL AND GAS DIVISION

1815

584A

WELL RECORD

Permit No. \_\_\_\_\_

Oil or Gas Well \_\_\_\_\_ (KIND)

Company SOUTH PENN NATURAL GAS. CO.  
Address Parkersburg, W. Va.  
Farm W. S. Keeling Acres \_\_\_\_\_  
Location (waters) \_\_\_\_\_  
Well No. 3 Elev. \_\_\_\_\_  
District Duval County Lincoln  
The surface of tract is owned in fee by \_\_\_\_\_  
Address \_\_\_\_\_  
Mineral rights are owned by \_\_\_\_\_  
Address \_\_\_\_\_  
Drilling commenced June 6, 1914  
Drilling completed Aug. 31, 1915  
Date Shot \_\_\_\_\_ From \_\_\_\_\_ To \_\_\_\_\_  
With \_\_\_\_\_  
Open Flow \_\_\_\_\_ /10ths Water in \_\_\_\_\_ Inch  
\_\_\_\_\_ /10ths Merc. in \_\_\_\_\_ Inch  
Volume \_\_\_\_\_ Cu. Ft.  
Rock Pressure \_\_\_\_\_ lbs. \_\_\_\_\_ hrs.  
Oil \_\_\_\_\_ bbls., 1st 24 hrs.  
Fresh water \_\_\_\_\_ feet \_\_\_\_\_ feet  
Salt water \_\_\_\_\_ feet \_\_\_\_\_ feet

Casing and Tubing	Used in Drilling	Left in Well	Packers
Size			Kind of Packer
16			
13			Size of
10			
8 1/4		1820	Depth set <u>1000</u>
6 5/8		1869	<u>all</u>
5 3/16			Perf. top _____
3			Perf. bottom <u>all</u>
2		2519	Perf. top _____
Liners Used			Perf. bottom _____

CASING CEMENTED \_\_\_\_\_ SIZE \_\_\_\_\_ No. Ft. \_\_\_\_\_ Date \_\_\_\_\_

COAL WAS ENCOUNTERED AT \_\_\_\_\_ FEET \_\_\_\_\_ INCHES  
\_\_\_\_\_ FEET \_\_\_\_\_ INCHES \_\_\_\_\_ FEET \_\_\_\_\_ INCHES  
\_\_\_\_\_ FEET \_\_\_\_\_ INCHES \_\_\_\_\_ FEET \_\_\_\_\_ INCHES

Formation	Color	Hard or Soft	Top	Bottom	Oil, Gas or Water	Depth Found	Remarks
Salt Sand			1125	1760	Cond 16'		
Little Lime			1775	1810			
Pencil Cave			1810	1815			
Big Lime			1815	1995			
Big Injun			1995	2075			
Brown Shale			2478	2499			
Berea Sand			2499	2519			

