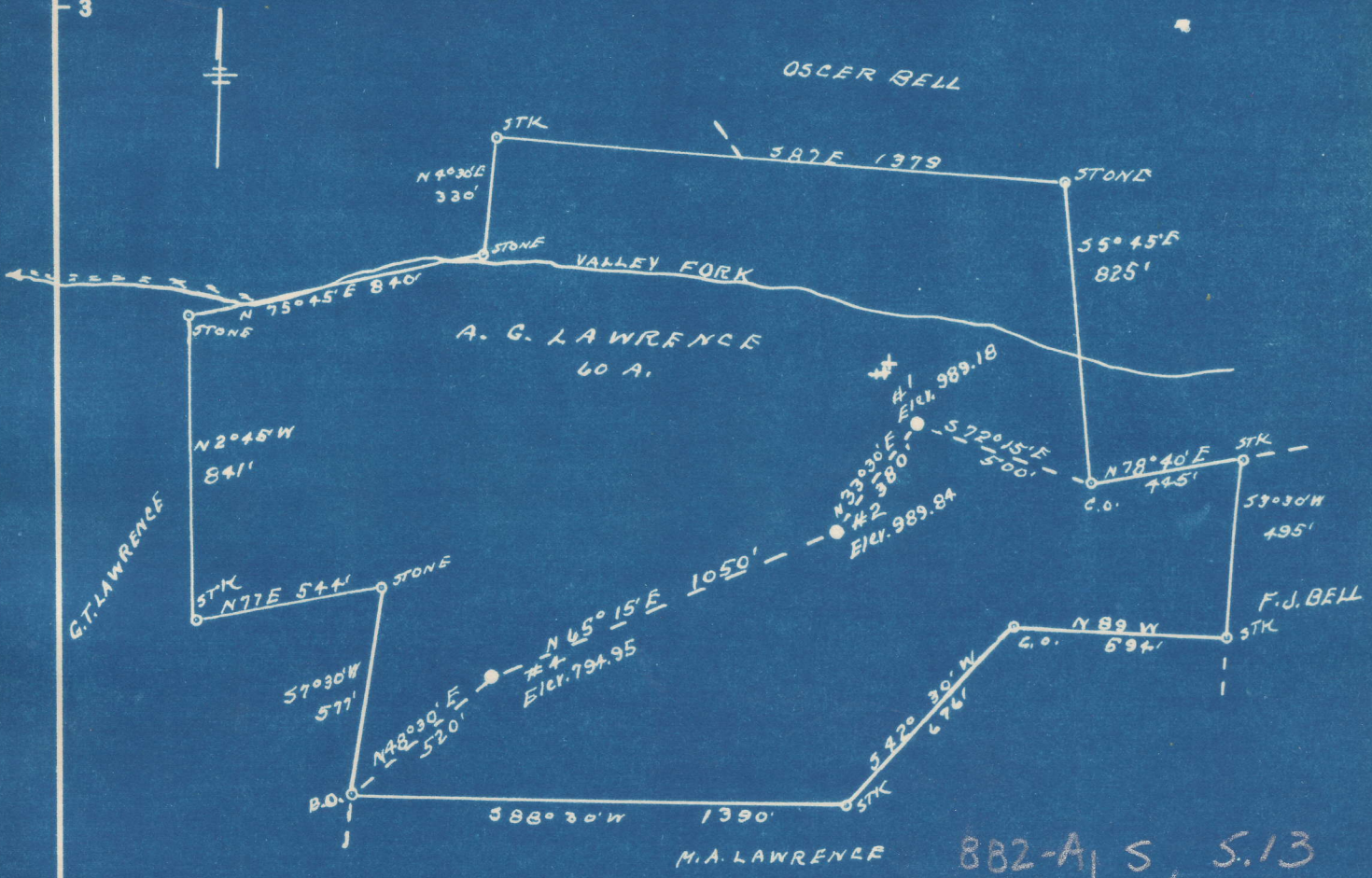


Latitude 38° 20'

Longitude 81° 55'



882-A	S	5.13
#1	W	3.92
883-A	S	5.20
#2	W	2.95
884-A	S	5.21
#4	W	3.00

New Location   
 Drill Deeper   
 Abandonment

Company G. S. & H. SUPPLY CO.  
 Address TULSA, OKLA.  
 Farm A. G. LAWRENCE  
 Tract \_\_\_\_\_ Acres 60 Lease No. \_\_\_\_\_  
 Well (Farm) No. 1-2-4 Serial No. \_\_\_\_\_  
 Elevation (Spirit Level) SEE ABOVE  
 Quadrangle SAINT ALBANS  
 County LINCOLN District DIVAL  
 Engineer D. F. Ripe  
 Engineer's Registration No. 804  
 File No. \_\_\_\_\_ Drawing No. \_\_\_\_\_  
 Date 1-24-49 Scale 1" = 500'

STATE OF WEST VIRGINIA  
 DEPARTMENT OF MINES  
 OIL AND GAS DIVISION  
 CHARLESTON

WELL LOCATION MAP  
 LIN-882-A-1  
 FILE NO. LIN-883-A-2  
 LIN-884-A-4

+ Denotes location of well on United States Topographic Maps, scale 1 to 62,500, latitude and longitude lines being represented by border lines as shown.  
 - Denotes one inch spaces on border line of original tracing.

A. G. LAWRENCE NO. 4 WELL.

884A

Duval District, Lincoln County, W. Va.  
By G. S. H. Supply Co., Hallie Pack, Hamlin, W. Va.  
Abandoned under permit Lin-.....-A?  
On.....acres.  
Elevation, 794.95' L.  
Date of completion, etc., not given.  
6 $\frac{5}{8}$ " casing, 1602'; 2" tubing, 2293'; all left in.  
Oil well. Record to Dept. of Mines stamped July 17, 1950.  
Record to RCT from Mrs. Griffith Sept. 9, 1950. Old File No. 1112.

	Top.	Bottom.
Salt Sand	940	- 1550
Little Lime	1550	- 1584
Pencil Cave	1584	- 1592
Big Lime	1592	- 1766
Big Injun Sand	1766	- 1806
Brown shale	2252	- 2272
Berea Sand	2272	- 2294
Total depth		2294



STATE OF WEST VIRGINIA  
DEPARTMENT OF MINES  
OIL AND GAS DIVISION

(1219)

1112

Permit No. LIN-884A **WELL RECORD** Oil or Gas Well \_\_\_\_\_ (KIND)

Company G. S. H. Supply Company  
 Address c/o Hallie Pack, Hamlin, West Virginia  
 Farm A. G. Lawrence Acres \_\_\_\_\_  
 Location (waters) \_\_\_\_\_  
 Well No. # Elev. 794.95  
 District Duval County Lincoln  
 The surface of tract is owned in fee by \_\_\_\_\_  
 Address \_\_\_\_\_  
 Mineral rights are owned by \_\_\_\_\_  
 Address \_\_\_\_\_  
 Drilling commenced \_\_\_\_\_  
 Drilling completed \_\_\_\_\_  
 Date Shot From \_\_\_\_\_ To \_\_\_\_\_  
 With \_\_\_\_\_  
 Open Flow /10ths Water in \_\_\_\_\_ Inch  
 /10ths Merc. in \_\_\_\_\_ Inch  
 Volume \_\_\_\_\_ Cu. Ft.  
 Rock Pressure \_\_\_\_\_ lbs. \_\_\_\_\_ hrs.  
 Oil \_\_\_\_\_ bbls., 1st 24 hrs.  
 Fresh water \_\_\_\_\_ feet \_\_\_\_\_ feet  
 Salt water \_\_\_\_\_ feet \_\_\_\_\_ feet

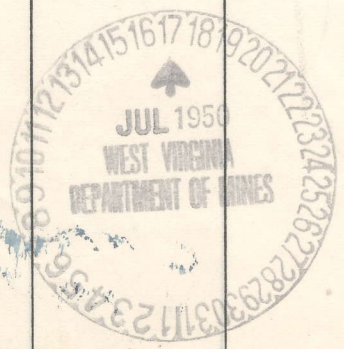
Casing and Tubing	Used in Drilling	Left in Well	Packers
Size			
16			Kind of Packer
13			
10			Size of
8 1/4			
6 5/8	<u>1602</u>	<u>1602</u>	Depth set
5 3/16			
3			Perf. top
2	<u>2292</u>	<u>2292</u>	Perf. bottom
Liners Used			Perf. top
			Perf. bottom

CASING CEMENTED \_\_\_\_\_ SIZE \_\_\_\_\_ No. Ft. \_\_\_\_\_ Date \_\_\_\_\_  
 COAL WAS ENCOUNTERED AT \_\_\_\_\_ FEET \_\_\_\_\_ INCHES  
 \_\_\_\_\_ FEET \_\_\_\_\_ INCHES FEET \_\_\_\_\_ INCHES  
 \_\_\_\_\_ FEET \_\_\_\_\_ INCHES FEET \_\_\_\_\_ INCHES

Formation	Color	Hard or Soft	Top	Bottom	Oil, Gas or Water	Depth Found	Remarks
Salt Sand		940	1550				
Little Lime		1550	1584				
Pencil Cave		1584	1592				
Big Lime		1592	1766				
Big Injun		1766	1806				
Brown Shale		2252	2272				
Berea Sand		2272	2294				

Handwritten red scribble

1604  
400  
1204



(Over) SEP - 9 1950