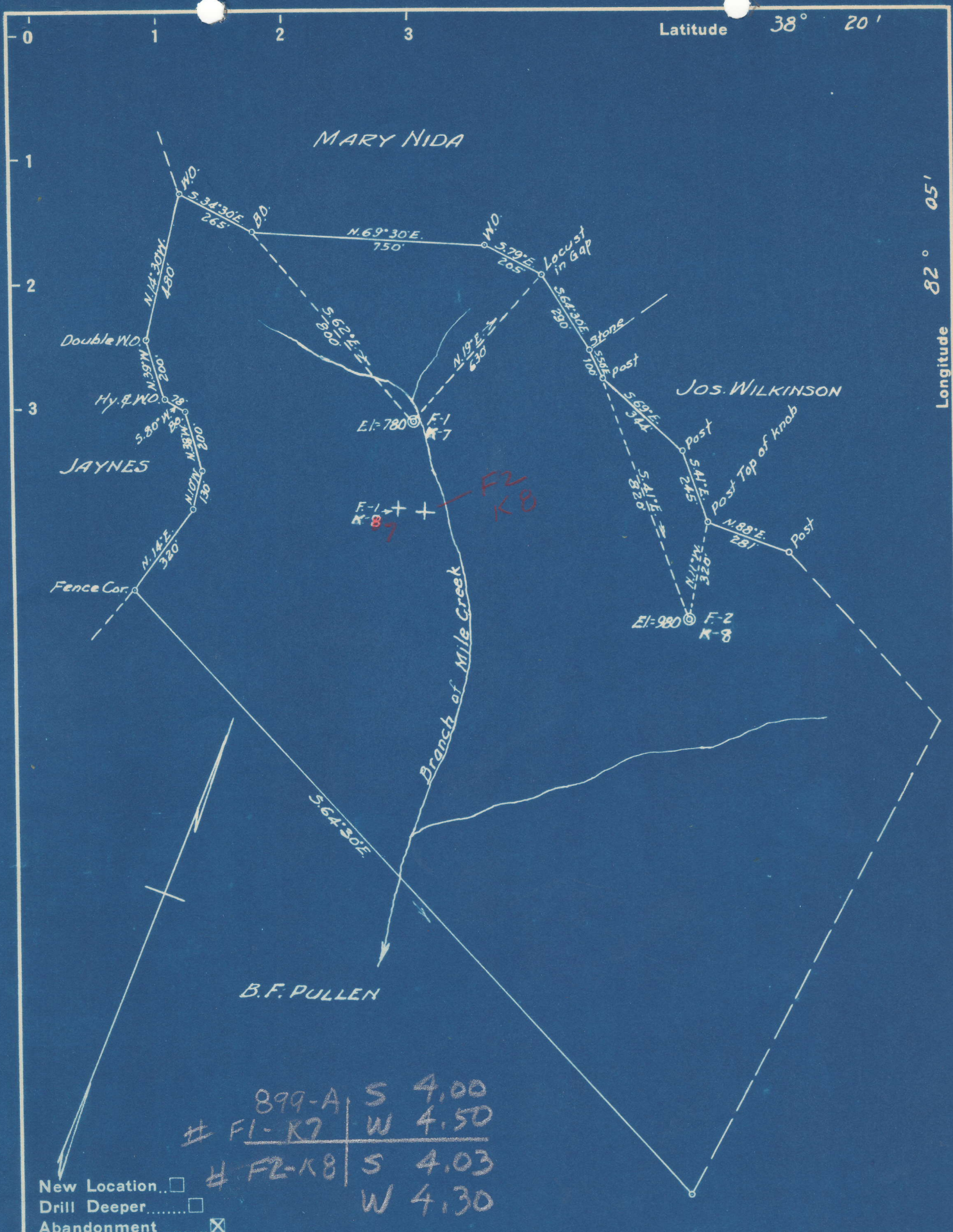


Latitude 38° 20'

Longitude 82° 05'



New Location...   
 Drill Deeper...   
 Abandonment...

Company SOUTHEASTERN GAS Co.  
 Address CHARLESTON, W. VA.  
 Farm MARY A. NOEL  
 Tract \_\_\_\_\_ Acres 87 Lease No. 2490  
 Well (Farm) No. 1 Serial No. 7  
 Elevation (Spirit Level) 780  
 Quadrangle MILTON  
 County LINCOLN District SHERIDAN  
 Engineer G. T. Ewing  
 Engineer's Registration No. 309 *SC*  
 File No. \_\_\_\_\_ Drawing No. \_\_\_\_\_  
 Date 8-5-50 Scale 1" = 400'

STATE OF WEST VIRGINIA  
 DEPARTMENT OF MINES  
 OIL AND GAS DIVISION  
 CHARLESTON

**WELL LOCATION MAP**  
 FILE NO. LIN-899-A

+ Denotes location of well on United States Topographic Maps, scale 1 to 62,500, latitude and longitude lines being represented by border lines as shown.

- Denotes one inch spaces on border line of original tracing.